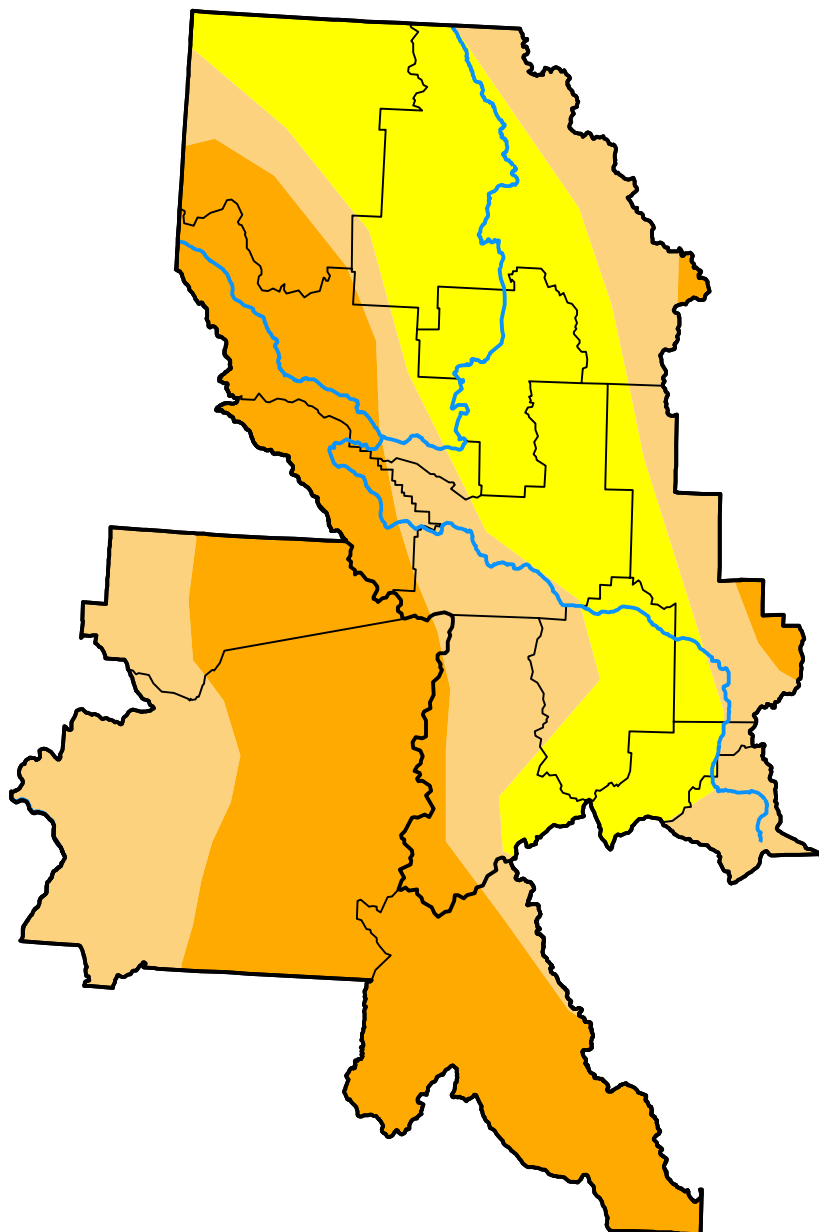


U.S. Drought Monitor

Missoula, MT WFO

August 16, 2005
 (Released Thursday, Aug. 18, 2005)

Valid 8 a.m. EDT



Drought Conditions (Percent Area)

	None	D0	D1	D2	D3	D4
Current	0.00	29.57	31.92	38.51	0.00	0.00
Last Week <i>08-11-2005</i>	0.00	29.57	36.50	33.93	0.00	0.00
3 Months Ago <i>05-19-2005</i>	0.00	0.00	13.06	29.48	57.46	0.00
Start of Calendar Year <i>01-06-2005</i>	59.44	14.02	11.25	11.26	4.03	0.00
Start of Water Year <i>09-30-2004</i>	79.79	5.07	5.49	5.03	4.62	0.00
One Year Ago <i>08-19-2004</i>	22.53	17.85	24.27	26.30	7.04	2.02

Intensity:

- None
- D0 Abnormally Dry
- D1 Moderate Drought
- D2 Severe Drought
- D3 Extreme Drought
- D4 Exceptional Drought

The Drought Monitor focuses on broad-scale conditions. Local conditions may vary. For more information on the Drought Monitor, go to <https://droughtmonitor.unl.edu/About.aspx>

Author:

David Miskus
 NOAA/NWS/NCEP/CPC



droughtmonitor.unl.edu