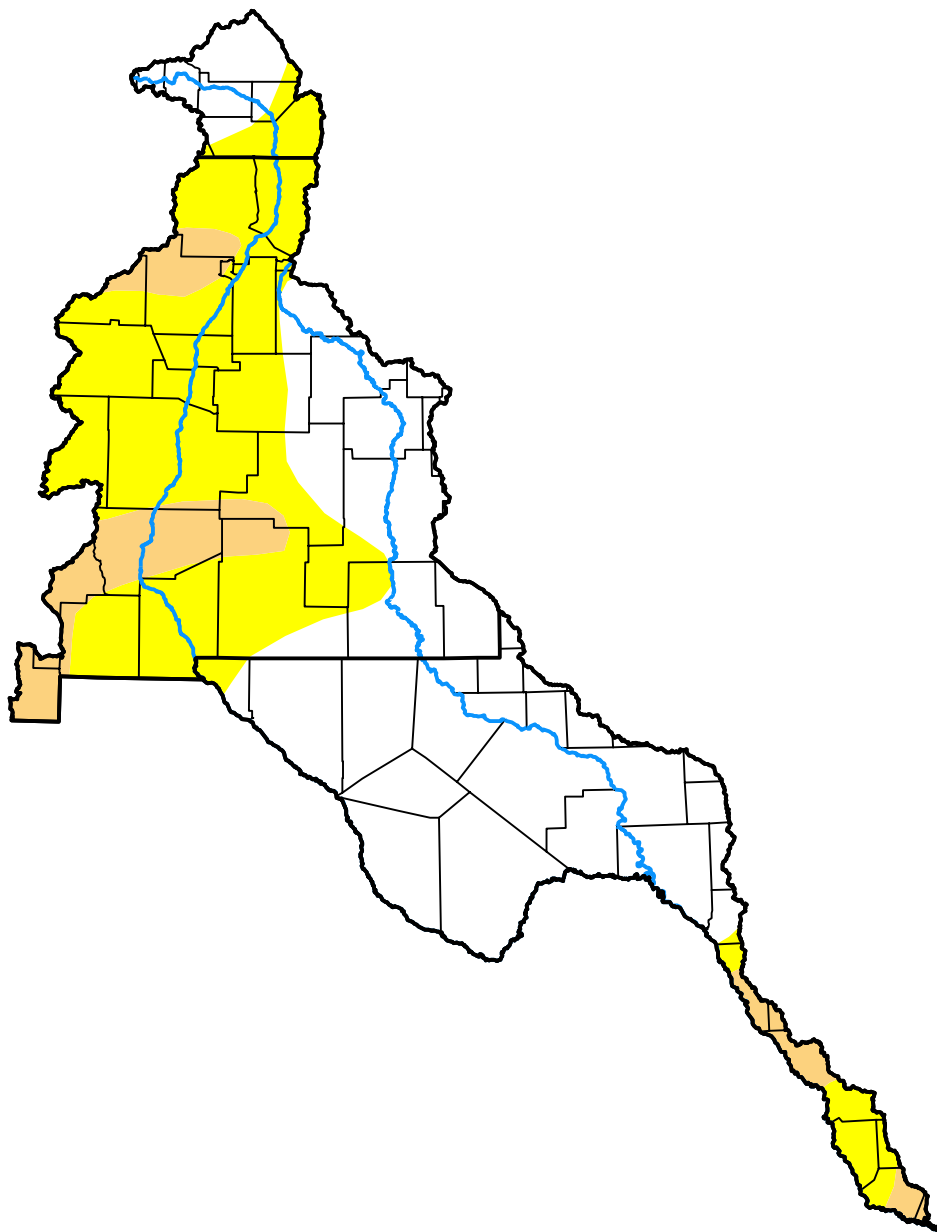


U.S. Drought Monitor

Rio Grande Watershed

October 18, 2005
(Released Thursday, Oct. 20, 2005)

Valid 8 a.m. EDT



Drought Conditions (Percent Area)

	None	D0	D1	D2	D3	D4
Current	52.94	37.00	10.06	0.00	0.00	0.00
Last Week <i>10-13-2005</i>	49.70	36.60	12.33	1.37	0.00	0.00
3 Months Ago <i>07-21-2005</i>	45.54	39.15	11.77	3.43	0.10	0.00
Start of Calendar Year <i>01-06-2005</i>	54.70	9.74	18.30	11.23	6.02	0.00
Start of Water Year <i>09-29-2005</i>	50.33	34.39	13.91	1.37	0.00	0.00
One Year Ago <i>10-21-2004</i>	49.42	11.91	16.58	15.23	6.86	0.00

Intensity:

- None
- D0 Abnormally Dry
- D1 Moderate Drought
- D2 Severe Drought
- D3 Extreme Drought
- D4 Exceptional Drought

The Drought Monitor focuses on broad-scale conditions. Local conditions may vary. For more information on the Drought Monitor, go to <https://droughtmonitor.unl.edu/About.aspx>

Author:

David Miskus
 NOAA/NWS/NCEP/CPC



droughtmonitor.unl.edu