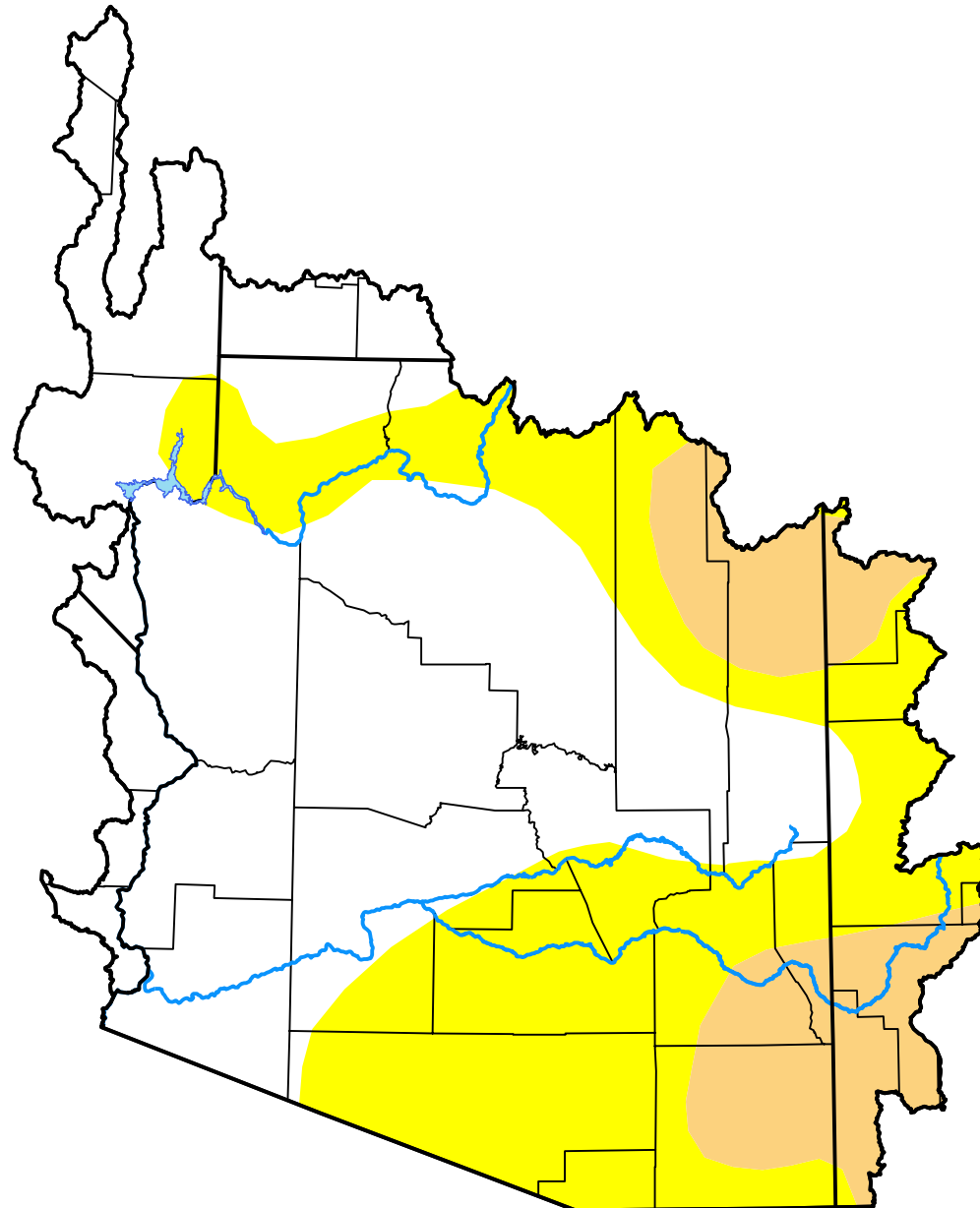


# U.S. Drought Monitor

## Lower Colorado Watershed

**October 18, 2005**  
 (Released Thursday, Oct. 20, 2005)  
 Valid 8 a.m. EDT



*Drought Conditions (Percent Area)*

	None	D0	D1	D2	D3	D4
<b>Current</b>	54.12	33.03	12.85	0.00	0.00	0.00
<b>Last Week</b> <i>10-13-2005</i>	54.12	33.07	12.81	0.00	0.00	0.00
<b>3 Months Ago</b> <i>07-21-2005</i>	49.72	33.87	16.41	0.00	0.00	0.00
<b>Start of Calendar Year</b> <i>01-06-2005</i>	0.00	12.48	41.97	33.63	11.92	0.00
<b>Start of Water Year</b> <i>09-29-2005</i>	67.55	18.27	14.18	0.00	0.00	0.00
<b>One Year Ago</b> <i>10-21-2004</i>	0.00	7.23	8.84	46.50	37.42	0.00

***Intensity:***

- None
- D0 Abnormally Dry
- D1 Moderate Drought
- D2 Severe Drought
- D3 Extreme Drought
- D4 Exceptional Drought

*The Drought Monitor focuses on broad-scale conditions. Local conditions may vary. For more information on the Drought Monitor, go to <https://droughtmonitor.unl.edu/About.aspx>*

***Author:***

David Miskus  
 NOAA/NWS/NCEP/CPC

