

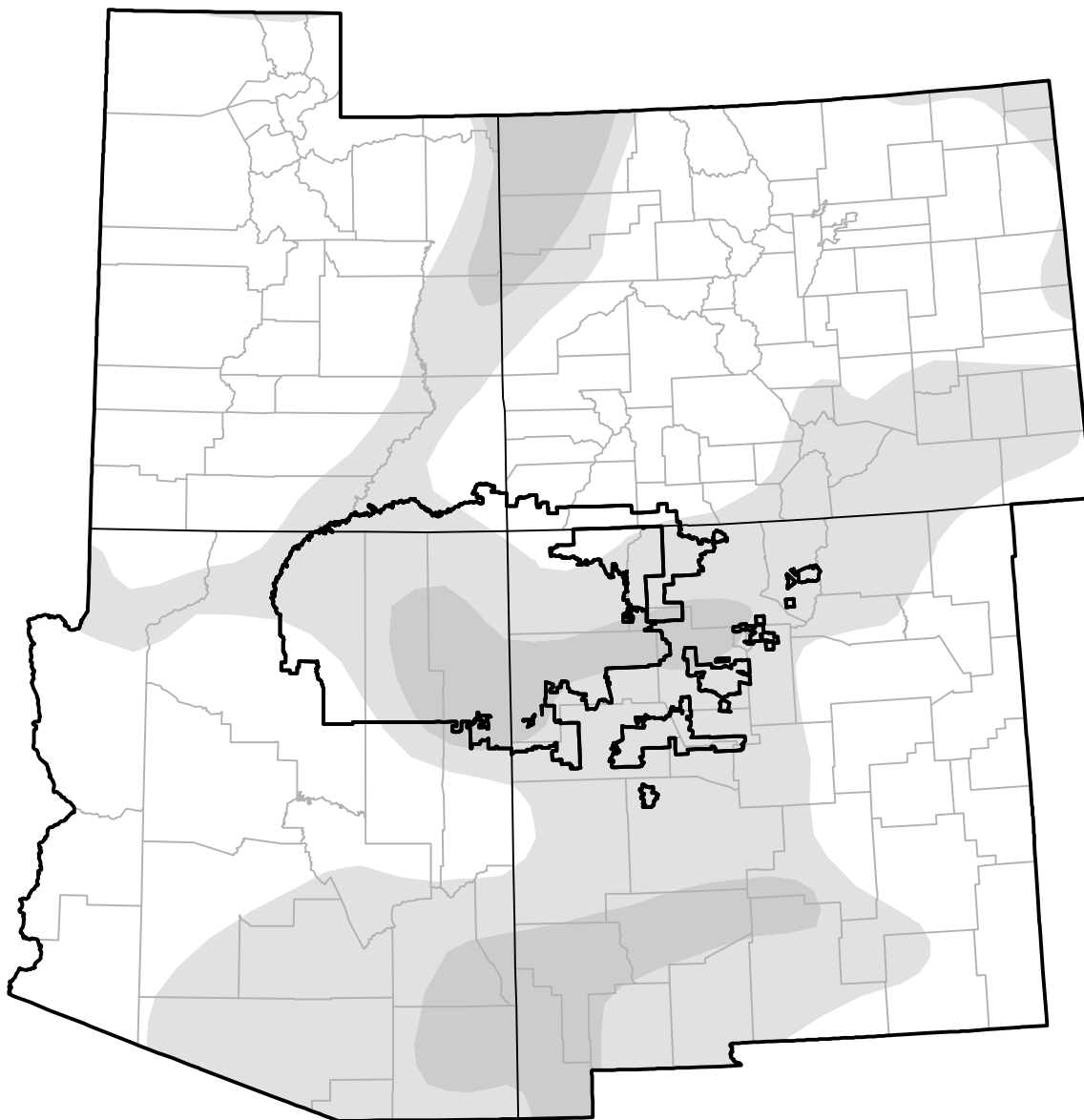
Corners RDEWS and Surrounding Areas

(Released Thursday, Oct. 20, 2005)

Valid 8 a.m. EDT

Drought Conditions (Percent Area)

	None	D0-D4	D1-D4	D2-D4	D3-D4	D4
Current	57.11	42.89	9.44	0.00	0.00	0.00
Last Week <i>10-13-2005</i>	57.11	42.89	9.84	0.00	0.00	0.00
3 Months Ago <i>07-21-2005</i>	55.33	44.67	12.79	0.29	0.00	0.00
Start of Calendar Year <i>01-06-2005</i>	14.63	85.37	66.76	34.05	11.09	0.15
Start of Water Year <i>09-29-2005</i>	56.13	43.87	11.47	0.25	0.00	0.00
One Year Ago <i>10-21-2004</i>	12.95	87.05	75.62	57.92	27.09	0.30



Intensity:

- None
- D0 Abnormally Dry
- D1 Moderate Drought
- D2 Severe Drought
- D3 Extreme Drought
- D4 Exceptional Drought

The Drought Monitor focuses on broad-scale conditions. Local conditions may vary. For more information on the Drought Monitor, go to <https://droughtmonitor.unl.edu/About.aspx>

Author:

David Miskus
NOAA/NWS/NCEP/CPC

