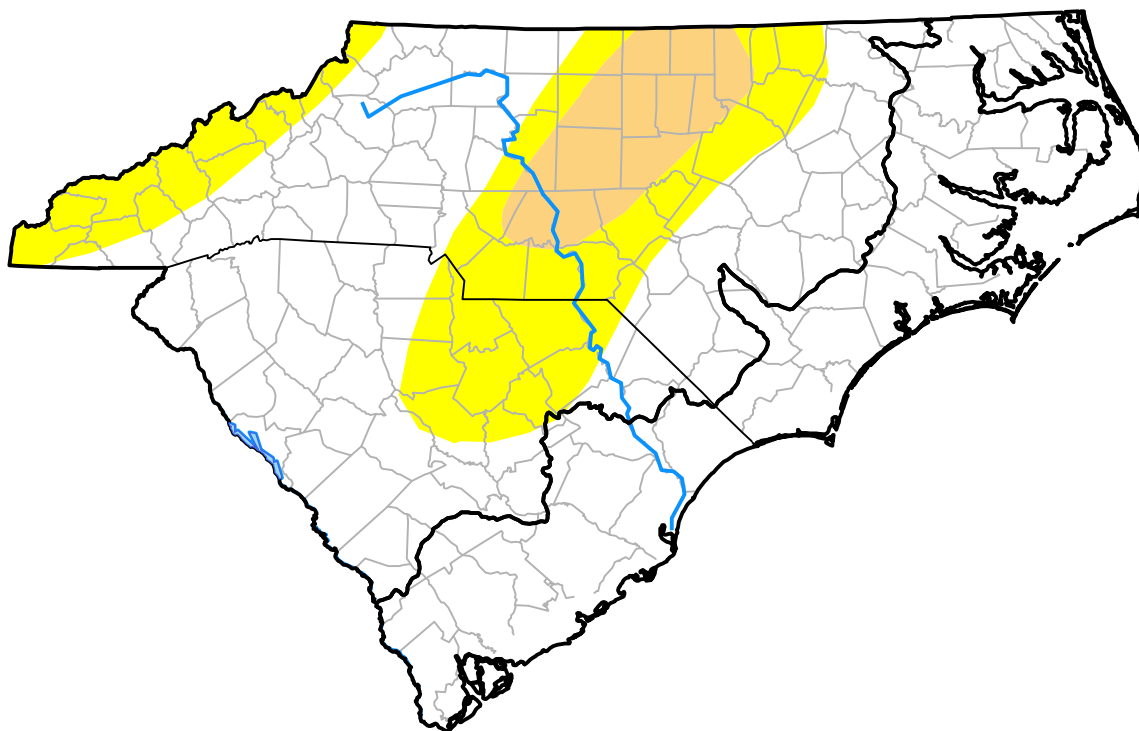


# U.S. Drought Monitor

## Coastal Carolinas RDEWS

**October 18, 2005**  
*(Released Thursday, Oct. 20, 2005)*  
 Valid 8 a.m. EDT



*Drought Conditions (Percent Area)*

	None	D0	D1	D2	D3	D4
<b>Current</b>	100.00	0.00	0.00	0.00	0.00	0.00
<b>Last Week</b> <i>10-13-2005</i>	100.00	0.00	0.00	0.00	0.00	0.00
<b>3 Months Ago</b> <i>07-21-2005</i>	100.00	0.00	0.00	0.00	0.00	0.00
<b>Start of Calendar Year</b> <i>01-06-2005</i>	100.00	0.00	0.00	0.00	0.00	0.00
<b>Start of Water Year</b> <i>09-29-2005</i>	54.30	44.65	1.05	0.00	0.00	0.00
<b>One Year Ago</b> <i>10-21-2004</i>	100.00	0.00	0.00	0.00	0.00	0.00

*Intensity:*



*The Drought Monitor focuses on broad-scale conditions. Local conditions may vary. For more information on the Drought Monitor, go to <https://droughtmonitor.unl.edu/About.aspx>*

*Author:*

David Miskus  
 NOAA/NWS/NCEP/CPC



**droughtmonitor.unl.edu**