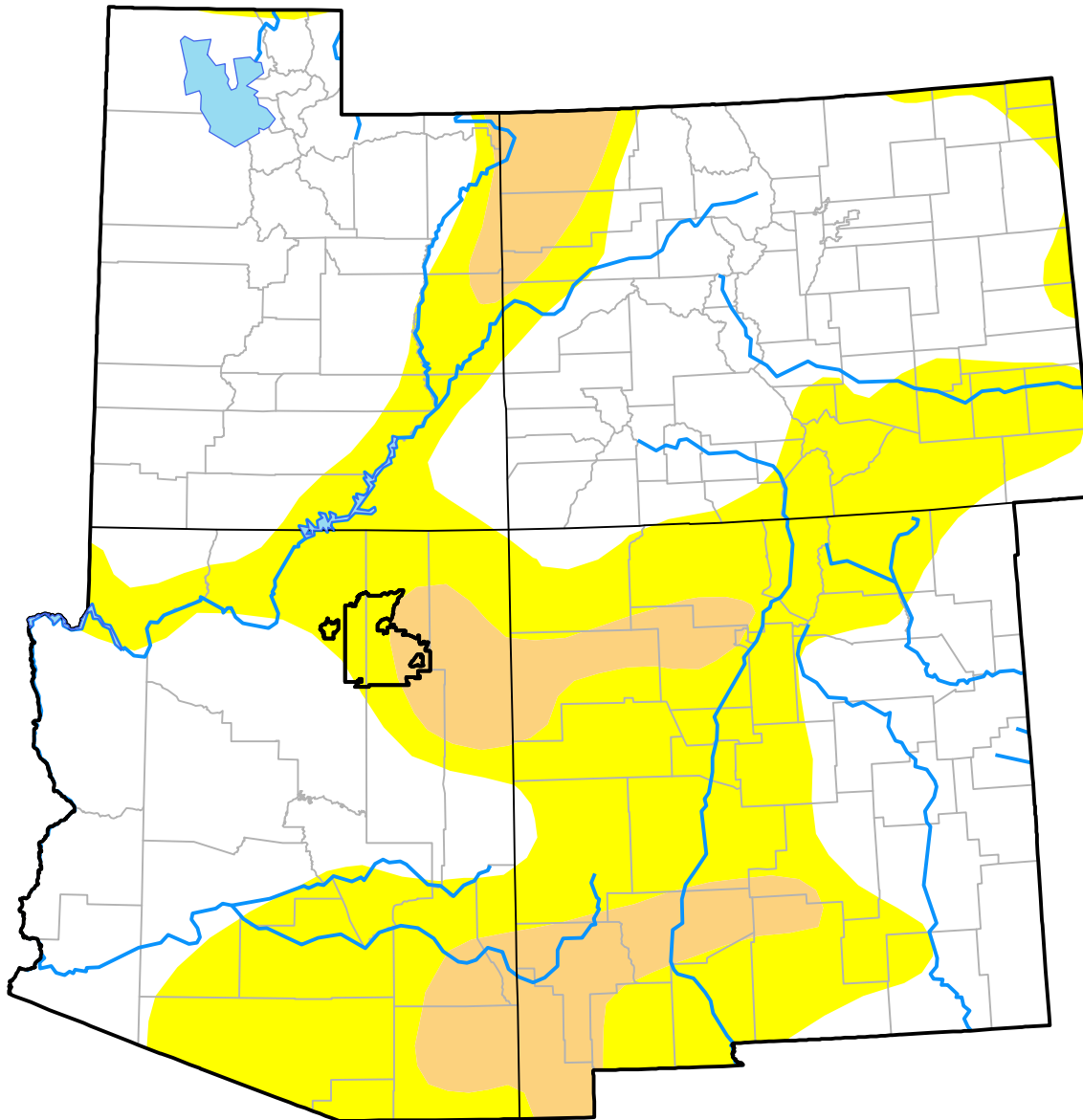


U.S. Drought Monitor Hopi RDEWS

October 18, 2005
(Released Thursday, Oct. 20, 2005)
Valid 8 a.m. EDT



Drought Conditions (Percent Area)

	None	D0-D4	D1-D4	D2-D4	D3-D4	D4
Current	1.41	98.59	24.60	0.00	0.00	0.00
Last Week <i>10-13-2005</i>	1.41	98.59	24.60	0.00	0.00	0.00
3 Months Ago <i>07-21-2005</i>	5.70	94.30	32.50	0.00	0.00	0.00
Start of Calendar Year <i>01-06-2005</i>	0.00	100.00	100.00	100.00	29.98	0.00
Start of Water Year <i>09-29-2005</i>	1.41	98.59	24.60	0.00	0.00	0.00
One Year Ago <i>10-21-2004</i>	0.00	100.00	100.00	100.00	100.00	0.00

Intensity:



The Drought Monitor focuses on broad-scale conditions. Local conditions may vary. For more information on the Drought Monitor, go to <https://droughtmonitor.unl.edu/About.aspx>

Author:

David Miskus
NOAA/NWS/NCEP/CPC

