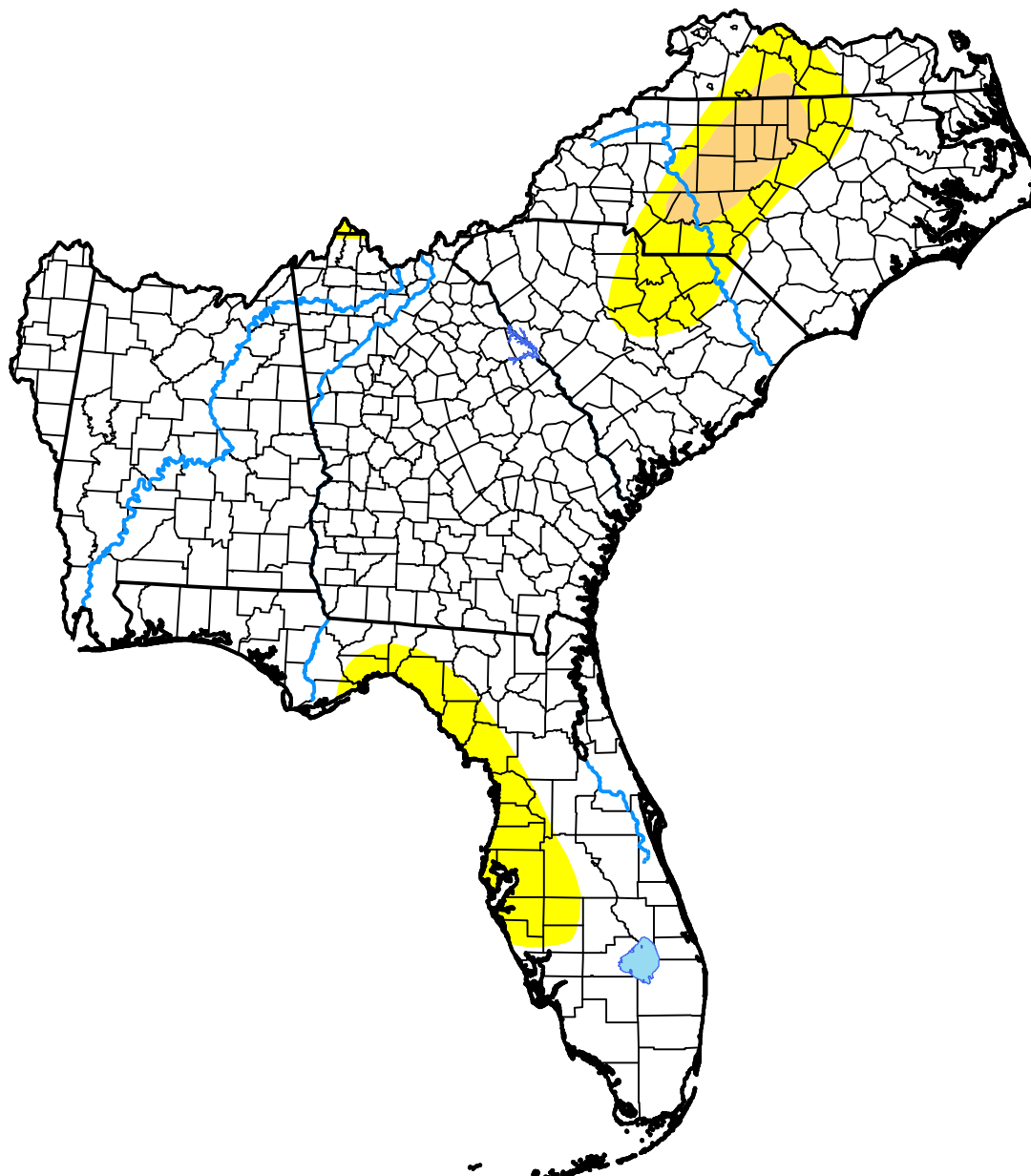


# U.S. Drought Monitor Southeast RFC

**October 18, 2005**  
(Released Thursday, Oct. 20, 2005)

Valid 8 a.m. EDT



*Drought Conditions (Percent Area)*

	None	D0-D4	D1-D4	D2-D4	D3-D4	D4
<b>Current</b>	86.72	13.28	2.56	0.00	0.00	0.00
<b>Last Week</b> <i>10-13-2005</i>	87.34	12.66	2.56	0.00	0.00	0.00
<b>3 Months Ago</b> <i>07-21-2005</i>	97.91	2.09	0.00	0.00	0.00	0.00
<b>Start of Calendar Year</b> <i>01-06-2005</i>	96.54	3.46	0.00	0.00	0.00	0.00
<b>Start of Water Year</b> <i>09-29-2005</i>	66.31	33.69	9.38	0.00	0.00	0.00
<b>One Year Ago</b> <i>10-21-2004</i>	100.00	0.00	0.00	0.00	0.00	0.00

***Intensity:***

- None
- D0 Abnormally Dry
- D1 Moderate Drought
- D2 Severe Drought
- D3 Extreme Drought
- D4 Exceptional Drought

*The Drought Monitor focuses on broad-scale conditions. Local conditions may vary. For more information on the Drought Monitor, go to <https://droughtmonitor.unl.edu/About.aspx>*

***Author:***

David Miskus  
NOAA/NWS/NCEP/CPC

