

# U.S. Drought Monitor

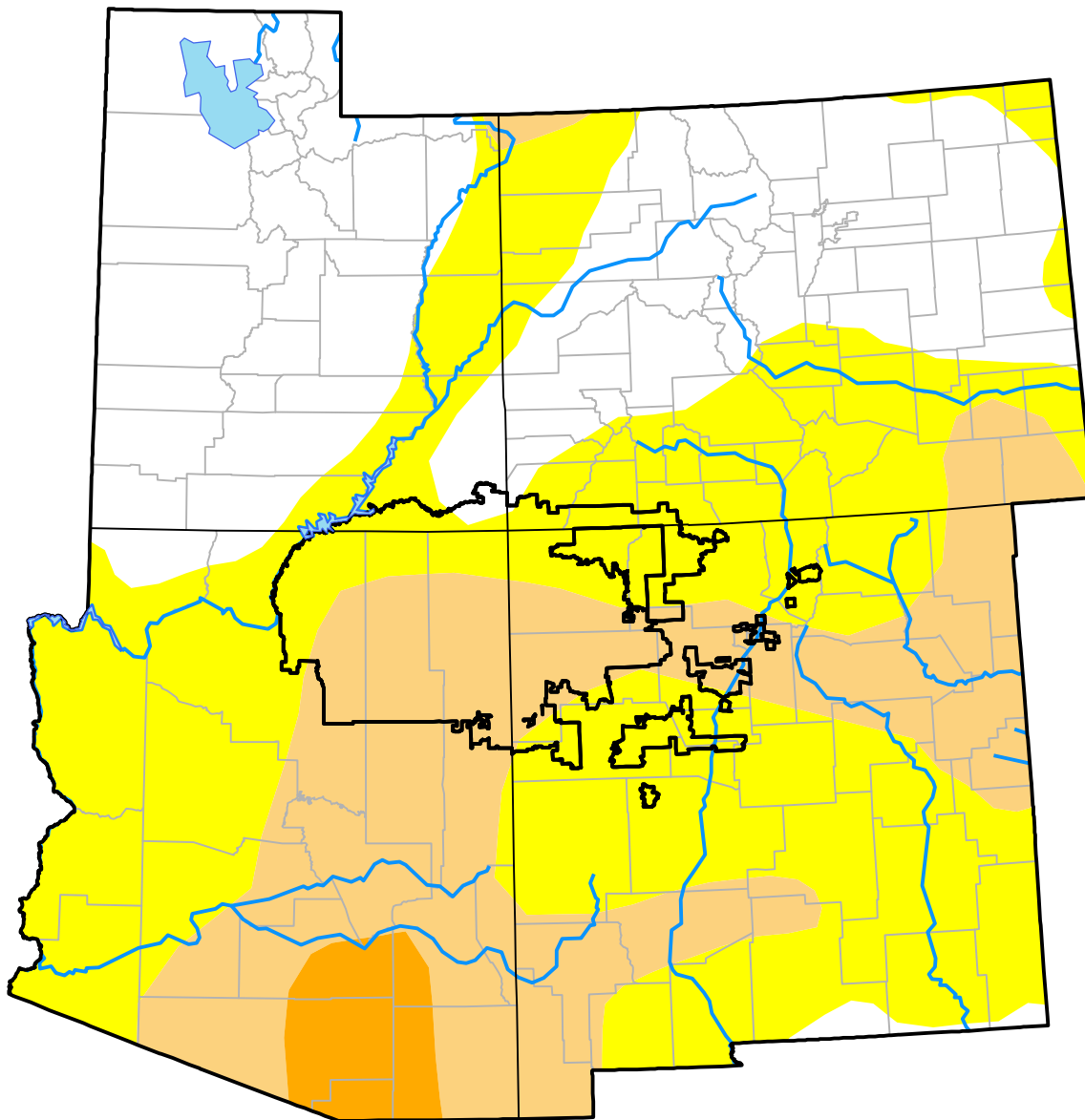
## Four Corners RDEWS

January 10, 2006  
(Released Thursday, Jan. 12, 2006)

Valid 7 a.m. EST

Drought Conditions (Percent Area)

	None	D0-D4	D1-D4	D2-D4	D3-D4	D4
<b>Current</b>	1.66	98.34	54.72	0.00	0.00	0.00
<b>Last Week</b> <i>01-05-2006</i>	1.66	98.34	40.32	0.00	0.00	0.00
<b>3 Months Ago</b> <i>10-13-2005</i>	13.39	86.61	29.17	0.00	0.00	0.00
<b>Start of Calendar Year</b> <i>01-05-2006</i>	1.66	98.34	40.32	0.00	0.00	0.00
<b>Start of Water Year</b> <i>09-29-2005</i>	10.91	89.09	30.39	0.00	0.00	0.00
<b>One Year Ago</b> <i>01-13-2005</i>	0.00	100.00	100.00	86.74	44.76	0.00



### Intensity:



The Drought Monitor focuses on broad-scale conditions. Local conditions may vary. For more information on the Drought Monitor, go to <https://droughtmonitor.unl.edu/About.aspx>

### Author:

Douglas Le Comte  
CPC/NOAA



[droughtmonitor.unl.edu](https://droughtmonitor.unl.edu)