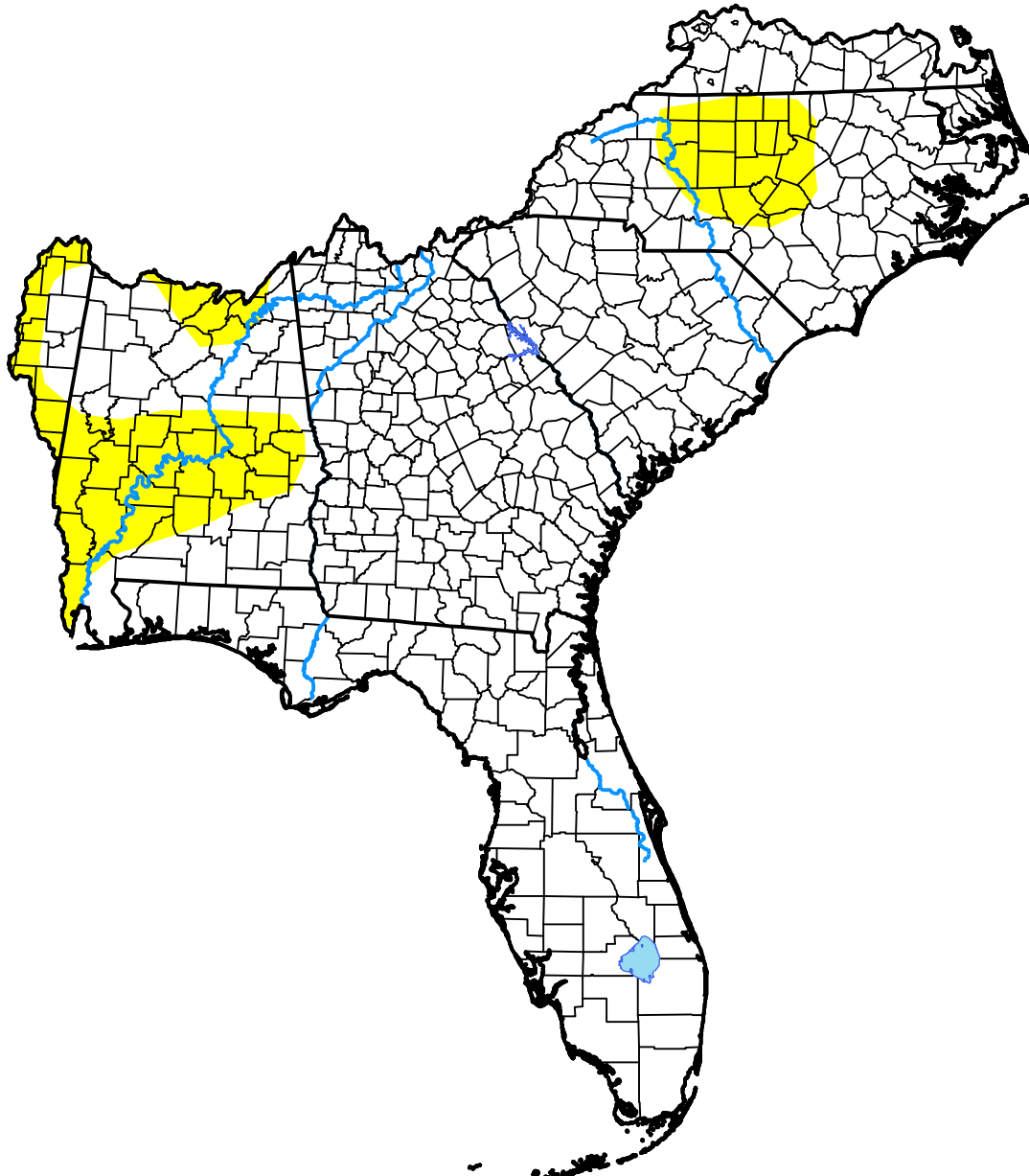


# U.S. Drought Monitor Southeast RFC

**January 10, 2006**  
(Released Thursday, Jan. 12, 2006)  
Valid 7 a.m. EST



*Drought Conditions (Percent Area)*

	None	D0	D1	D2	D3	D4
<b>Current</b>	86.54	13.46	0.00	0.00	0.00	0.00
<b>Last Week</b> <i>01-05-2006</i>	97.56	2.44	0.00	0.00	0.00	0.00
<b>3 Months Ago</b> <i>10-13-2005</i>	87.34	10.10	2.56	0.00	0.00	0.00
<b>Start of Calendar Year</b> <i>01-05-2006</i>	97.56	2.44	0.00	0.00	0.00	0.00
<b>Start of Water Year</b> <i>09-29-2005</i>	66.31	24.31	9.38	0.00	0.00	0.00
<b>One Year Ago</b> <i>01-13-2005</i>	96.54	3.46	0.00	0.00	0.00	0.00

***Intensity:***

- None
- D0 Abnormally Dry
- D1 Moderate Drought
- D2 Severe Drought
- D3 Extreme Drought
- D4 Exceptional Drought

*The Drought Monitor focuses on broad-scale conditions. Local conditions may vary. For more information on the Drought Monitor, go to <https://droughtmonitor.unl.edu/About.aspx>*

***Author:***

Douglas Le Comte  
CPC/NOAA

