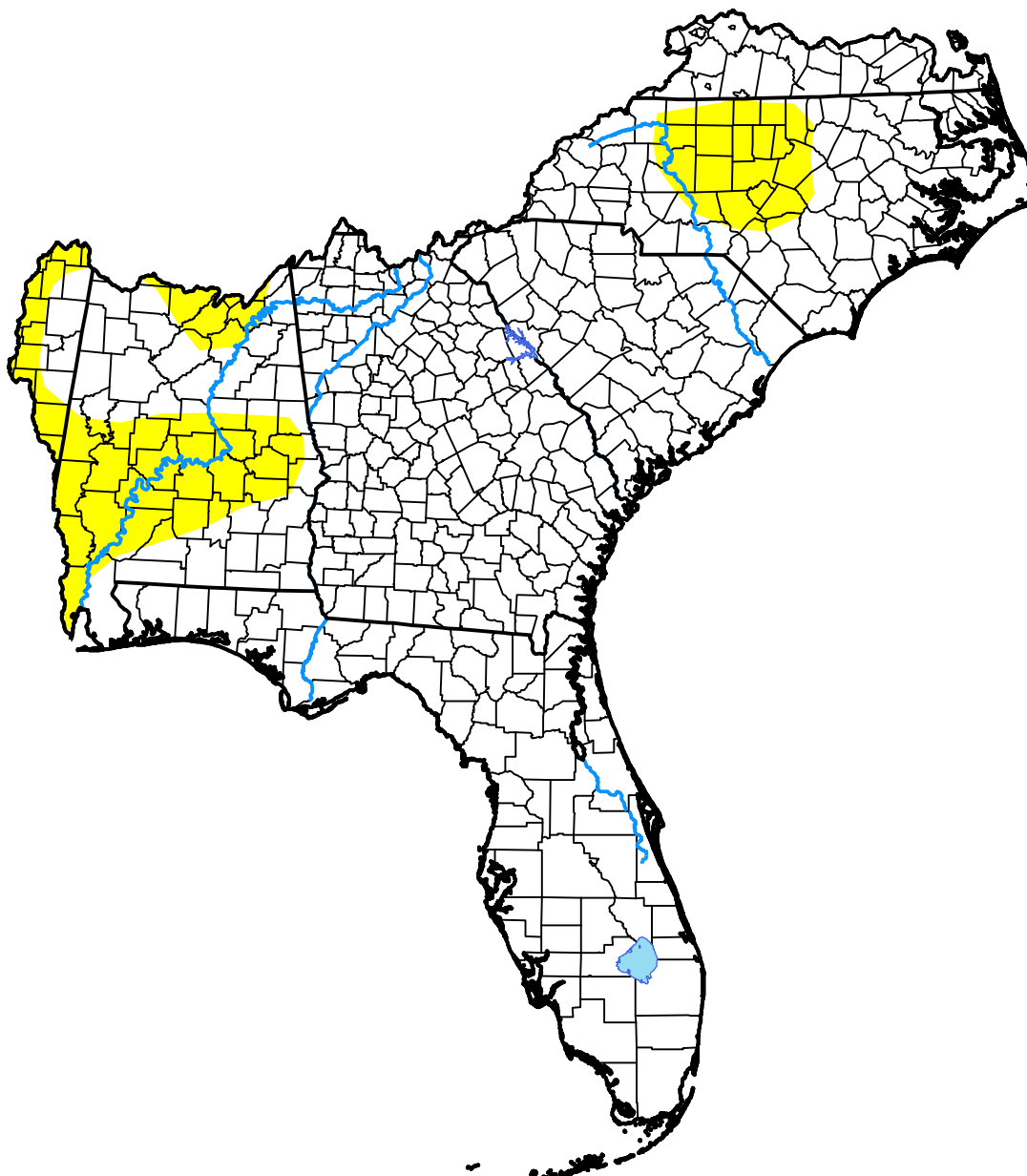


U.S. Drought Monitor Southeast RFC

January 10, 2006
(Released Thursday, Jan. 12, 2006)

Valid 7 a.m. EST



Drought Conditions (Percent Area)

	None	D0-D4	D1-D4	D2-D4	D3-D4	D4
Current	86.54	13.46	0.00	0.00	0.00	0.00
Last Week <i>01-05-2006</i>	97.56	2.44	0.00	0.00	0.00	0.00
3 Months Ago <i>10-13-2005</i>	87.34	12.66	2.56	0.00	0.00	0.00
Start of Calendar Year <i>01-05-2006</i>	97.56	2.44	0.00	0.00	0.00	0.00
Start of Water Year <i>09-29-2005</i>	66.31	33.69	9.38	0.00	0.00	0.00
One Year Ago <i>01-13-2005</i>	96.54	3.46	0.00	0.00	0.00	0.00

Intensity:



The Drought Monitor focuses on broad-scale conditions. Local conditions may vary. For more information on the Drought Monitor, go to <https://droughtmonitor.unl.edu/About.aspx>

Author:

Douglas Le Comte
CPC/NOAA



droughtmonitor.unl.edu