

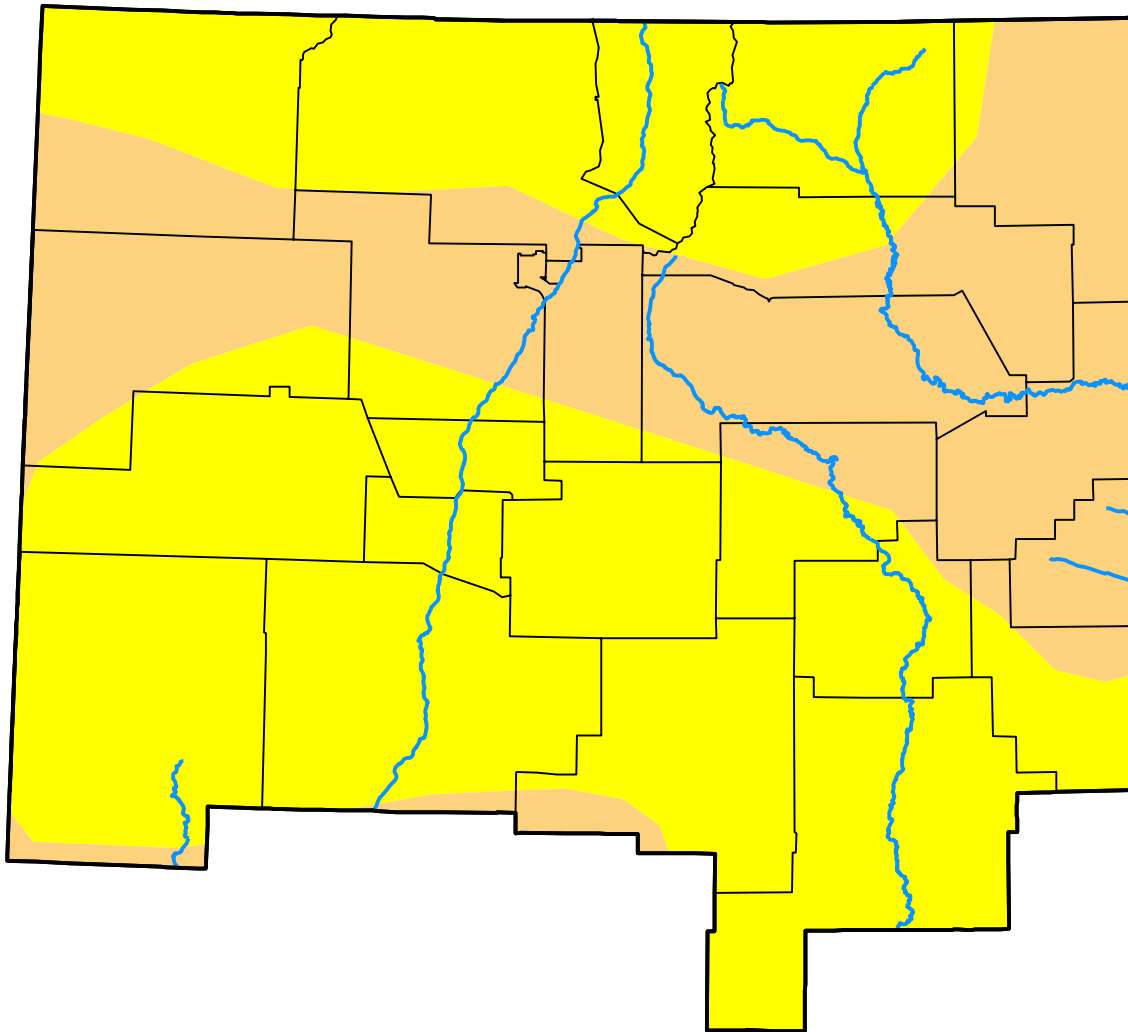
# U.S. Drought Monitor

## Albuquerque, NM WFO

**January 10, 2006**  
 (Released Thursday, Jan. 12, 2006)  
 Valid 7 a.m. EST

*Drought Conditions (Percent Area)*

	None	D0	D1	D2	D3	D4
<b>Current</b>	0.00	65.84	34.16	0.00	0.00	0.00
<b>Last Week</b> <i>01-05-2006</i>	0.00	80.43	19.57	0.00	0.00	0.00
<b>3 Months Ago</b> <i>10-13-2005</i>	36.69	54.94	8.37	0.00	0.00	0.00
<b>Start of Calendar Year</b> <i>01-05-2006</i>	0.00	80.43	19.57	0.00	0.00	0.00
<b>Start of Water Year</b> <i>09-29-2005</i>	30.70	57.31	12.00	0.00	0.00	0.00
<b>One Year Ago</b> <i>01-13-2005</i>	26.31	8.35	26.56	21.43	17.35	0.00



**Intensity:**

- None
- D0 Abnormally Dry
- D1 Moderate Drought
- D2 Severe Drought
- D3 Extreme Drought
- D4 Exceptional Drought

*The Drought Monitor focuses on broad-scale conditions. Local conditions may vary. For more information on the Drought Monitor, go to <https://droughtmonitor.unl.edu/About.aspx>*

**Author:**

Douglas Le Comte  
 CPC/NOAA



**droughtmonitor.unl.edu**