

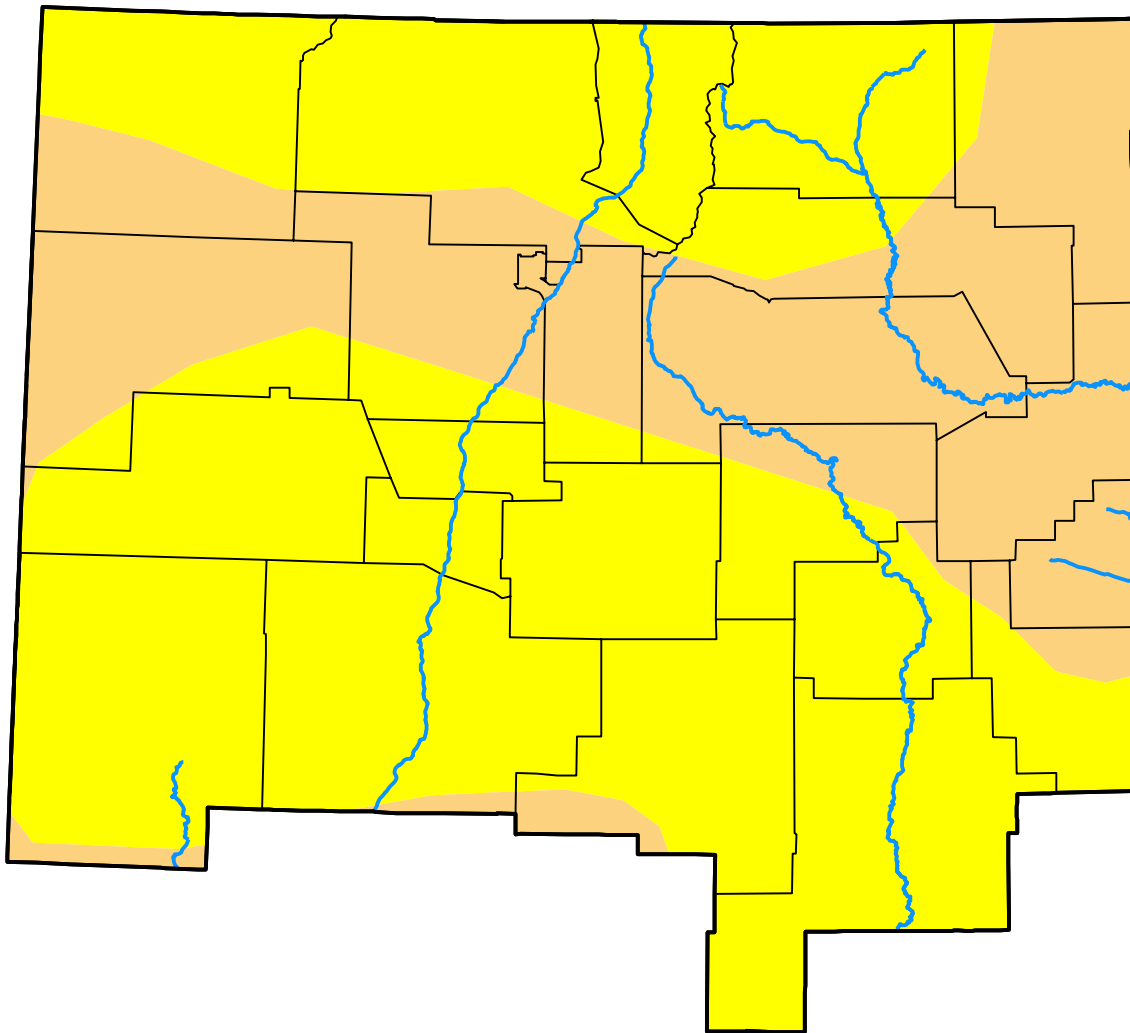
U.S. Drought Monitor

Albuquerque, NM WFO

January 10, 2006
 (Released Thursday, Jan. 12, 2006)
 Valid 7 a.m. EST

Drought Conditions (Percent Area)

	None	D0-D4	D1-D4	D2-D4	D3-D4	D4
Current	0.00	100.00	34.16	0.00	0.00	0.00
Last Week <i>01-05-2006</i>	0.00	100.00	19.57	0.00	0.00	0.00
3 Months Ago <i>10-13-2005</i>	36.69	63.31	8.37	0.00	0.00	0.00
Start of Calendar Year <i>01-05-2006</i>	0.00	100.00	19.57	0.00	0.00	0.00
Start of Water Year <i>09-29-2005</i>	30.70	69.30	12.00	0.00	0.00	0.00
One Year Ago <i>01-13-2005</i>	26.31	73.69	65.34	38.78	17.35	0.00



Intensity:



The Drought Monitor focuses on broad-scale conditions. Local conditions may vary. For more information on the Drought Monitor, go to <https://droughtmonitor.unl.edu/About.aspx>

Author:

Douglas Le Comte
 CPC/NOAA



droughtmonitor.unl.edu