

# U.S. Drought Monitor

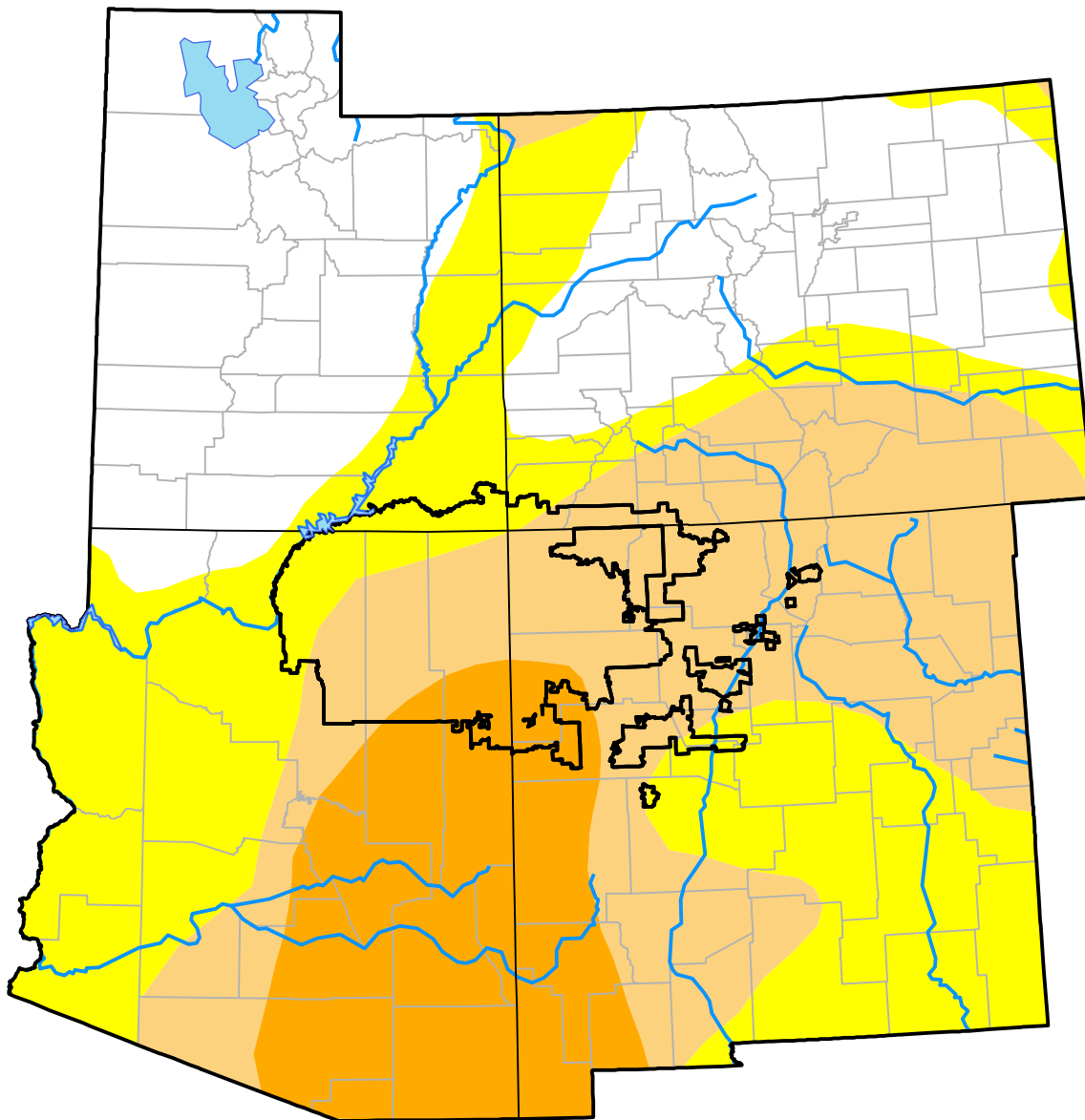
## Four Corners RDEWS

January 24, 2006  
 (Released Thursday, Jan. 26, 2006)

Valid 7 a.m. EST

Drought Conditions (Percent Area)

	None	D0-D4	D1-D4	D2-D4	D3-D4	D4
<b>Current</b>	0.00	100.00	78.34	14.10	0.00	0.00
<b>Last Week</b> <i>01-19-2006</i>	0.59	99.41	77.47	0.00	0.00	0.00
<b>3 Months Ago</b> <i>10-26-2005</i>	13.39	86.61	29.57	0.00	0.00	0.00
<b>Start of Calendar Year</b> <i>01-05-2006</i>	1.66	98.34	40.32	0.00	0.00	0.00
<b>Start of Water Year</b> <i>09-29-2005</i>	10.91	89.09	30.39	0.00	0.00	0.00
<b>One Year Ago</b> <i>01-27-2005</i>	0.00	100.00	97.96	86.37	32.71	0.00



**Intensity:**

- None
- D0 Abnormally Dry
- D1 Moderate Drought
- D2 Severe Drought
- D3 Extreme Drought
- D4 Exceptional Drought

The Drought Monitor focuses on broad-scale conditions. Local conditions may vary. For more information on the Drought Monitor, go to <https://droughtmonitor.unl.edu/About.aspx>

**Author:**

Brian Fuchs  
 National Drought Mitigation Center

