

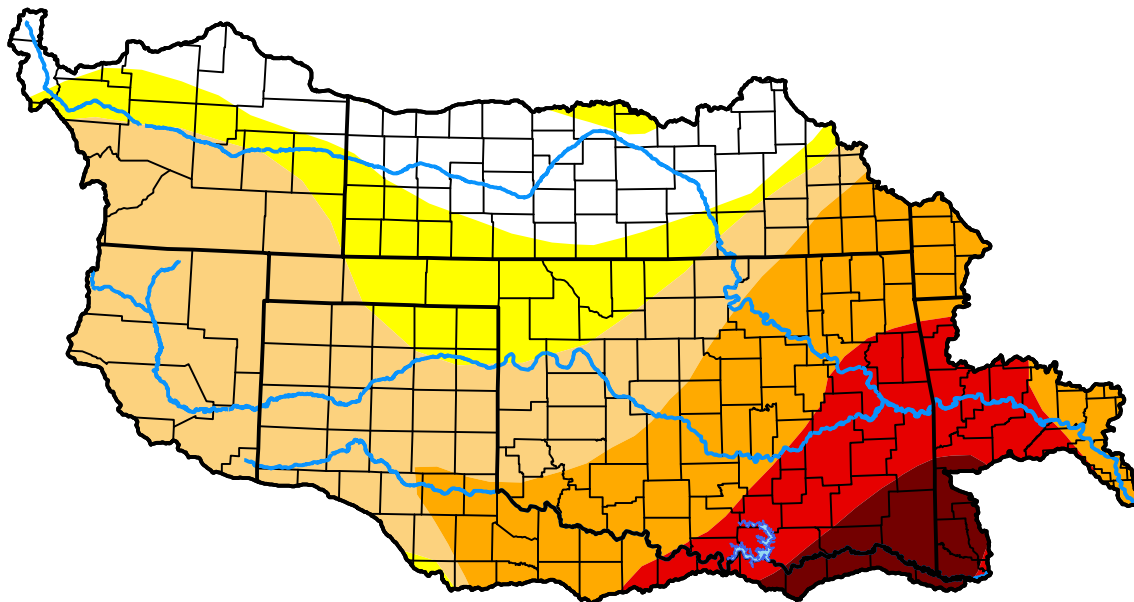
U.S. Drought Monitor

Arkansas Red Basin RFC

January 24, 2006
 (Released Thursday, Jan. 26, 2006)
 Valid 7 a.m. EST

Drought Conditions (Percent Area)

| | None | D0-D4 | D1-D4 | D2-D4 | D3-D4 | D4 |
|--|-------|-------|-------|-------|-------|------|
| Current | 15.12 | 84.88 | 69.71 | 35.10 | 14.46 | 4.08 |
| Last Week <i>01-19-2006</i> | 18.05 | 81.95 | 67.58 | 24.70 | 10.46 | 4.08 |
| 3 Months Ago <i>10-26-2005</i> | 44.36 | 55.64 | 14.81 | 4.53 | 0.44 | 0.00 |
| Start of Calendar Year <i>01-05-2006</i> | 22.54 | 77.46 | 54.78 | 23.41 | 6.17 | 4.08 |
| Start of Water Year <i>09-29-2005</i> | 77.50 | 22.50 | 4.26 | 0.79 | 0.00 | 0.00 |
| One Year Ago <i>01-27-2005</i> | 88.26 | 11.74 | 2.84 | 0.68 | 0.14 | 0.00 |



Intensity:



The Drought Monitor focuses on broad-scale conditions. Local conditions may vary. For more information on the Drought Monitor, go to <https://droughtmonitor.unl.edu/About.aspx>

Author:

Brian Fuchs
 National Drought Mitigation Center



droughtmonitor.unl.edu