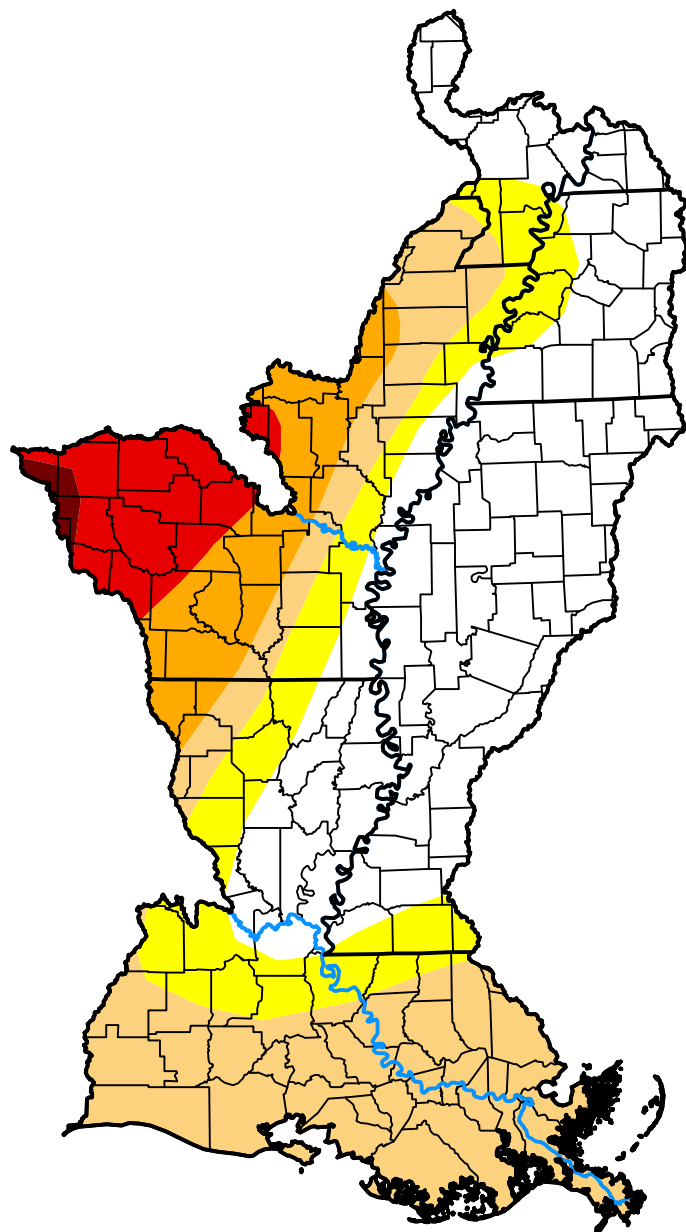


U.S. Drought Monitor

Lower Mississippi Watershed

January 31, 2006
 (Released Thursday, Feb. 2, 2006)
 Valid 7 a.m. EST



Drought Conditions (Percent Area)

	None	D0-D4	D1-D4	D2-D4	D3-D4	D4
Current	42.73	57.27	42.31	14.89	6.93	0.57
Last Week <i>01-26-2006</i>	22.47	77.53	56.54	18.27	8.56	0.87
3 Months Ago <i>11-03-2005</i>	17.49	82.51	14.22	0.00	0.00	0.00
Start of Calendar Year <i>01-05-2006</i>	31.92	68.08	38.75	18.15	3.65	0.87
Start of Water Year <i>09-29-2005</i>	97.20	2.80	0.00	0.00	0.00	0.00
One Year Ago <i>02-03-2005</i>	100.00	0.00	0.00	0.00	0.00	0.00

Intensity:



The Drought Monitor focuses on broad-scale conditions. Local conditions may vary. For more information on the Drought Monitor, go to <https://droughtmonitor.unl.edu/About.aspx>

Author:

Richard Tinker
 CPC/NOAA/NWS/NCEP



droughtmonitor.unl.edu