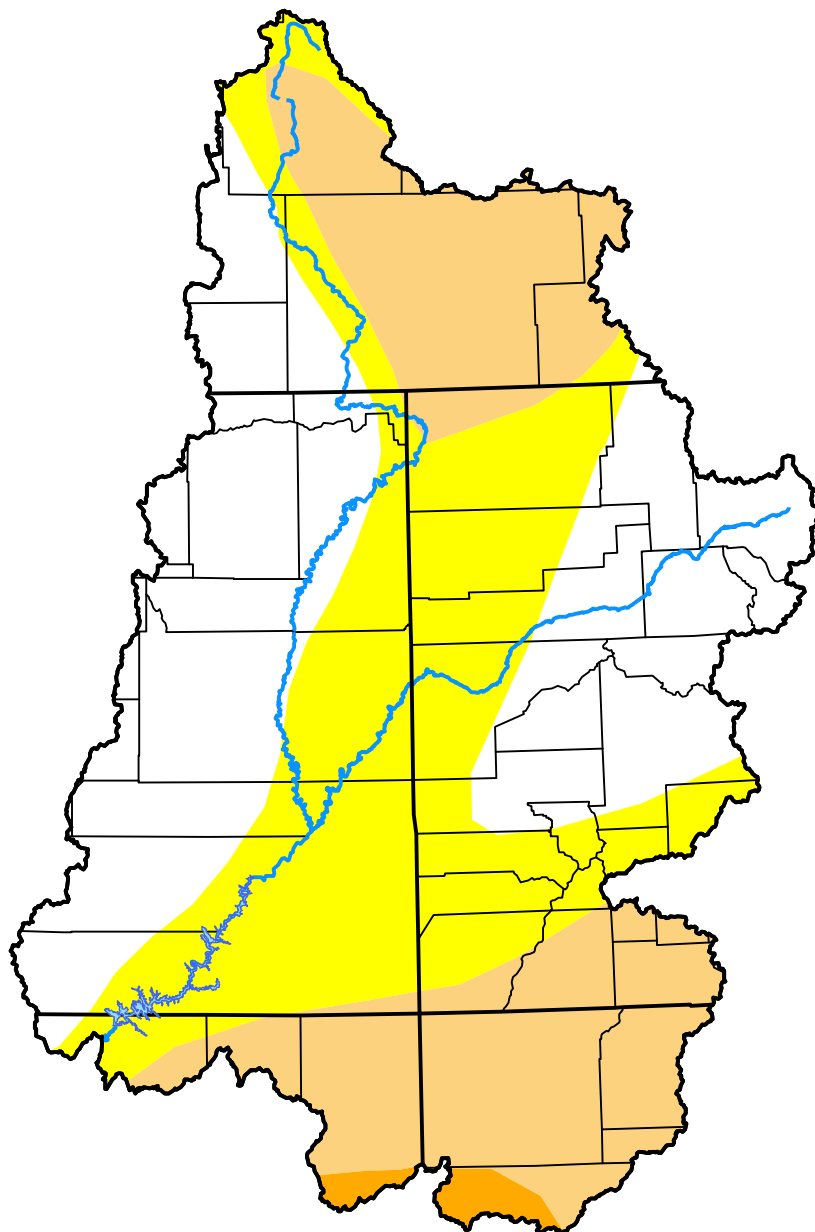


# U.S. Drought Monitor

## Upper Colorado Watershed

**January 31, 2006**  
 (Released Thursday, Feb. 2, 2006)  
 Valid 7 a.m. EST



*Drought Conditions (Percent Area)*

	None	D0	D1	D2	D3	D4
<b>Current</b>	37.80	33.32	27.64	1.24	0.00	0.00
<b>Last Week</b> <i>01-26-2006</i>	41.26	31.77	26.88	0.09	0.00	0.00
<b>3 Months Ago</b> <i>11-03-2005</i>	50.76	27.40	21.84	0.00	0.00	0.00
<b>Start of Calendar Year</b> <i>01-05-2006</i>	44.08	36.02	19.90	0.00	0.00	0.00
<b>Start of Water Year</b> <i>09-29-2005</i>	44.63	30.22	17.54	7.61	0.00	0.00
<b>One Year Ago</b> <i>02-03-2005</i>	0.76	18.83	34.39	40.65	5.37	0.00

***Intensity:***



*The Drought Monitor focuses on broad-scale conditions. Local conditions may vary. For more information on the Drought Monitor, go to <https://droughtmonitor.unl.edu/About.aspx>*

***Author:***

Richard Tinker  
 CPC/NOAA/NWS/NCEP



**droughtmonitor.unl.edu**