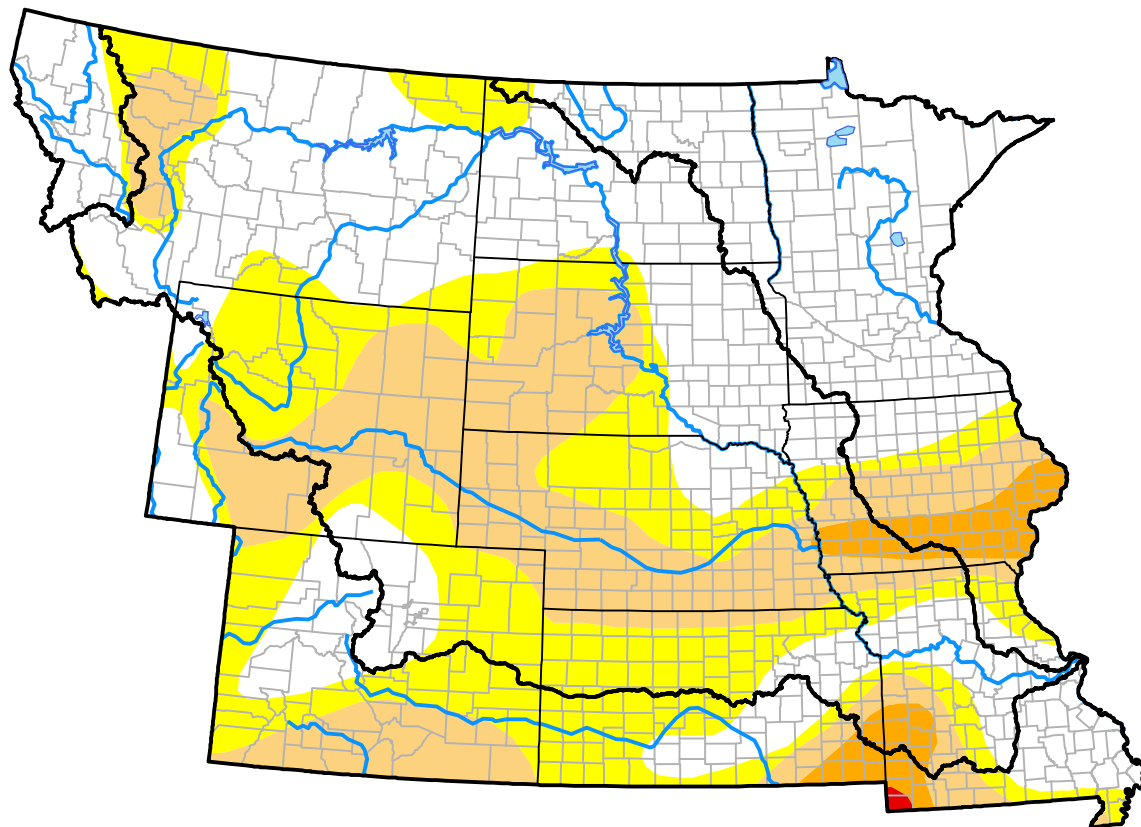


U.S. Drought Monitor

Missouri River Basin RDEWS

January 31, 2006
 (Released Thursday, Feb. 2, 2006)
 Valid 7 a.m. EST



Drought Conditions (Percent Area)

| | None | D0 | D1 | D2 | D3 | D4 |
|--|-------|-------|-------|-------|-------|------|
| Current | 42.03 | 29.65 | 26.49 | 1.83 | 0.00 | 0.00 |
| Last Week <i>01-26-2006</i> | 45.21 | 29.88 | 22.77 | 2.14 | 0.00 | 0.00 |
| 3 Months Ago <i>11-03-2005</i> | 39.93 | 35.21 | 24.01 | 0.86 | 0.00 | 0.00 |
| Start of Calendar Year <i>01-05-2006</i> | 49.30 | 28.96 | 20.68 | 1.06 | 0.00 | 0.00 |
| Start of Water Year <i>09-29-2005</i> | 33.60 | 34.17 | 24.55 | 7.68 | 0.00 | 0.00 |
| One Year Ago <i>02-03-2005</i> | 22.12 | 20.87 | 18.46 | 21.38 | 13.56 | 3.62 |

Intensity:



The Drought Monitor focuses on broad-scale conditions. Local conditions may vary. For more information on the Drought Monitor, go to <https://droughtmonitor.unl.edu/About.aspx>

Author:

Richard Tinker
 CPC/NOAA/NWS/NCEP

