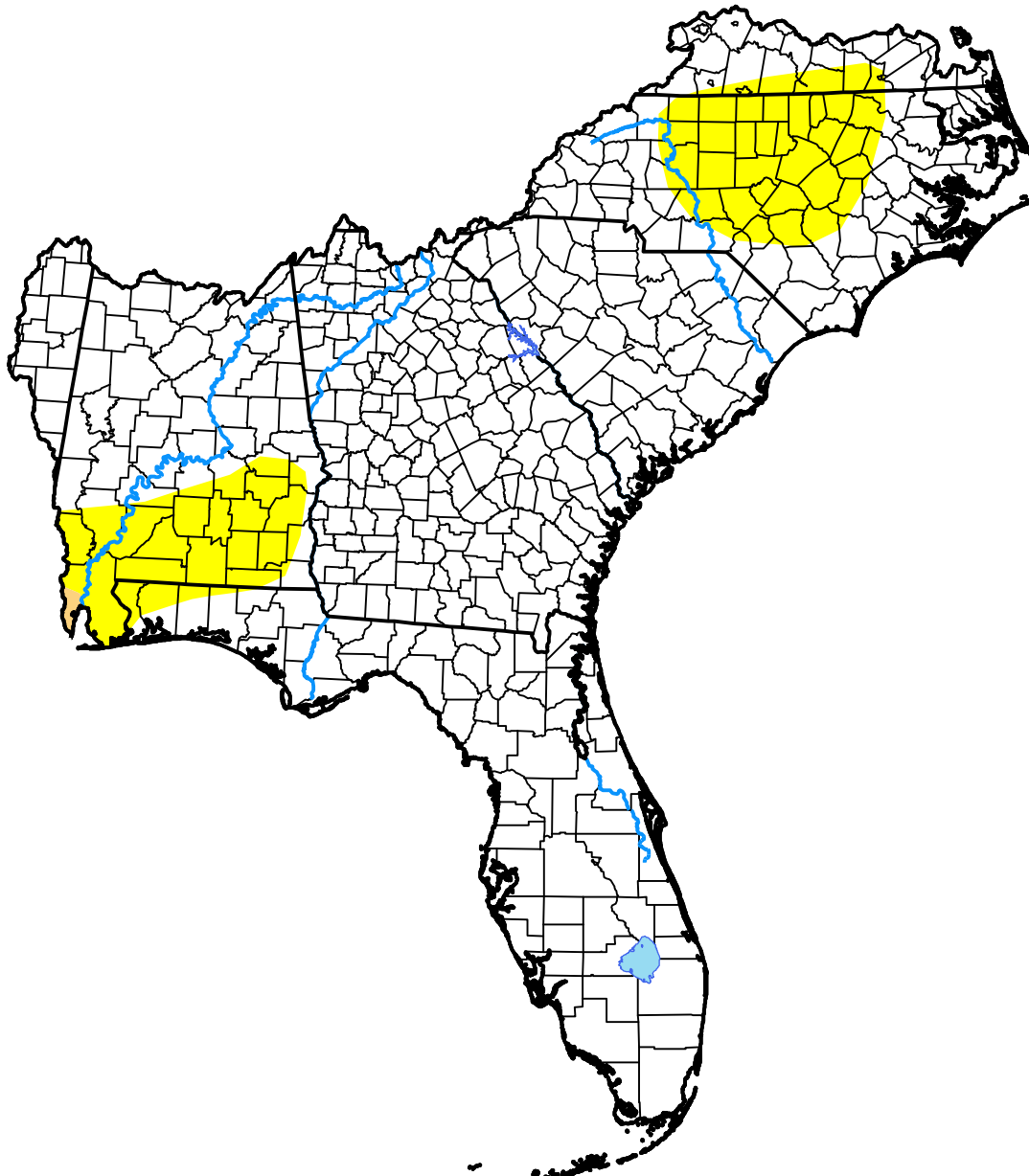


U.S. Drought Monitor Southeast RFC

January 31, 2006
(Released Thursday, Feb. 2, 2006)
Valid 7 a.m. EST



Drought Conditions (Percent Area)

	None	D0-D4	D1-D4	D2-D4	D3-D4	D4
Current	85.79	14.21	0.14	0.00	0.00	0.00
Last Week <i>01-26-2006</i>	89.10	10.90	0.00	0.00	0.00	0.00
3 Months Ago <i>11-03-2005</i>	60.15	39.85	6.79	1.68	0.00	0.00
Start of Calendar Year <i>01-05-2006</i>	97.56	2.44	0.00	0.00	0.00	0.00
Start of Water Year <i>09-29-2005</i>	66.31	33.69	9.38	0.00	0.00	0.00
One Year Ago <i>02-03-2005</i>	95.36	4.64	0.00	0.00	0.00	0.00

Intensity:

- None
- D0 Abnormally Dry
- D1 Moderate Drought
- D2 Severe Drought
- D3 Extreme Drought
- D4 Exceptional Drought

The Drought Monitor focuses on broad-scale conditions. Local conditions may vary. For more information on the Drought Monitor, go to <https://droughtmonitor.unl.edu/About.aspx>

Author:

Richard Tinker
CPC/NOAA/NWS/NCEP

