

U.S. Drought Monitor

Mobile, AL/Pensacola, FL WFO

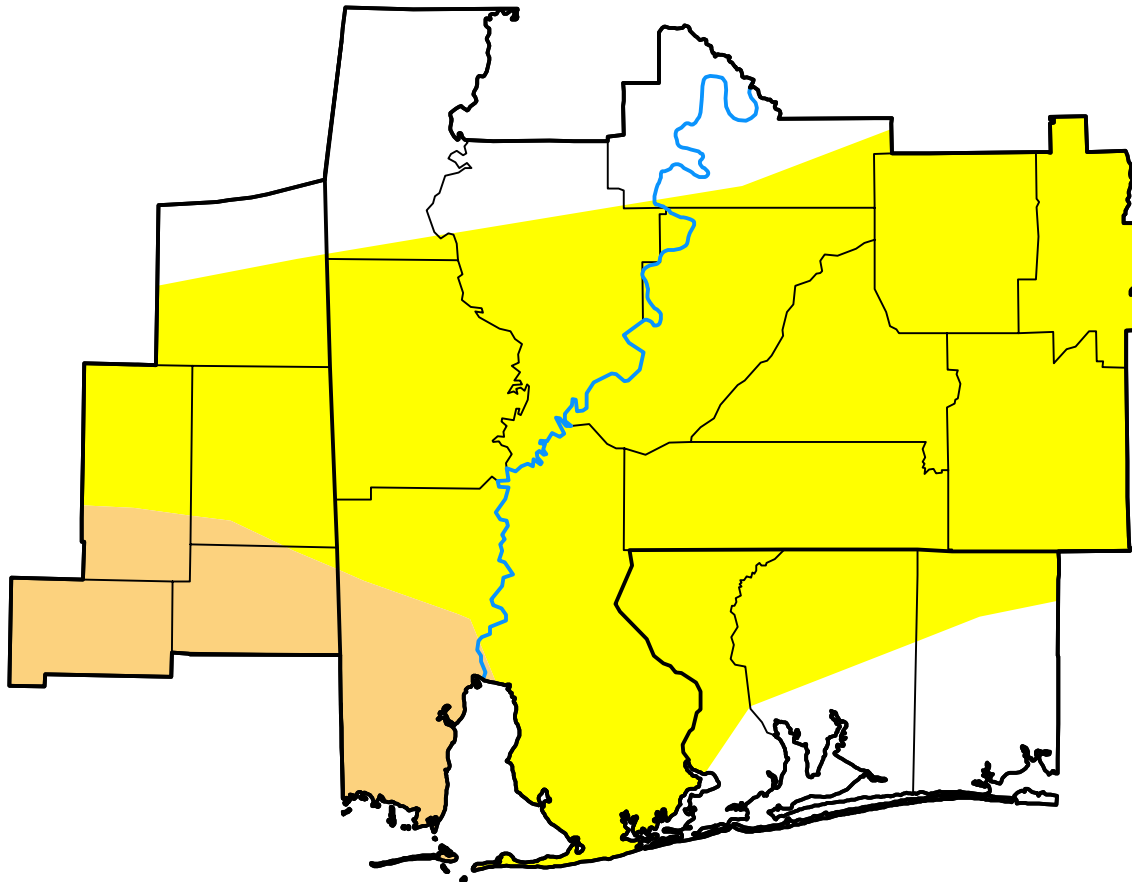
January 31, 2006

(Released Thursday, Feb. 2, 2006)

Valid 7 a.m. EST

Drought Conditions (Percent Area)

	None	D0	D1	D2	D3	D4
Current	19.59	69.83	10.58	0.00	0.00	0.00
Last Week <i>01-26-2006</i>	36.60	54.30	9.10	0.00	0.00	0.00
3 Months Ago <i>11-03-2005</i>	80.89	19.11	0.00	0.00	0.00	0.00
Start of Calendar Year <i>01-05-2006</i>	100.00	0.00	0.00	0.00	0.00	0.00
Start of Water Year <i>09-29-2005</i>	100.00	0.00	0.00	0.00	0.00	0.00
One Year Ago <i>02-03-2005</i>	100.00	0.00	0.00	0.00	0.00	0.00



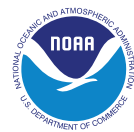
Intensity:



The Drought Monitor focuses on broad-scale conditions. Local conditions may vary. For more information on the Drought Monitor, go to <https://droughtmonitor.unl.edu/About.aspx>

Author:

Richard Tinker
CPC/NOAA/NWS/NCEP



droughtmonitor.unl.edu