

U.S. Drought Monitor

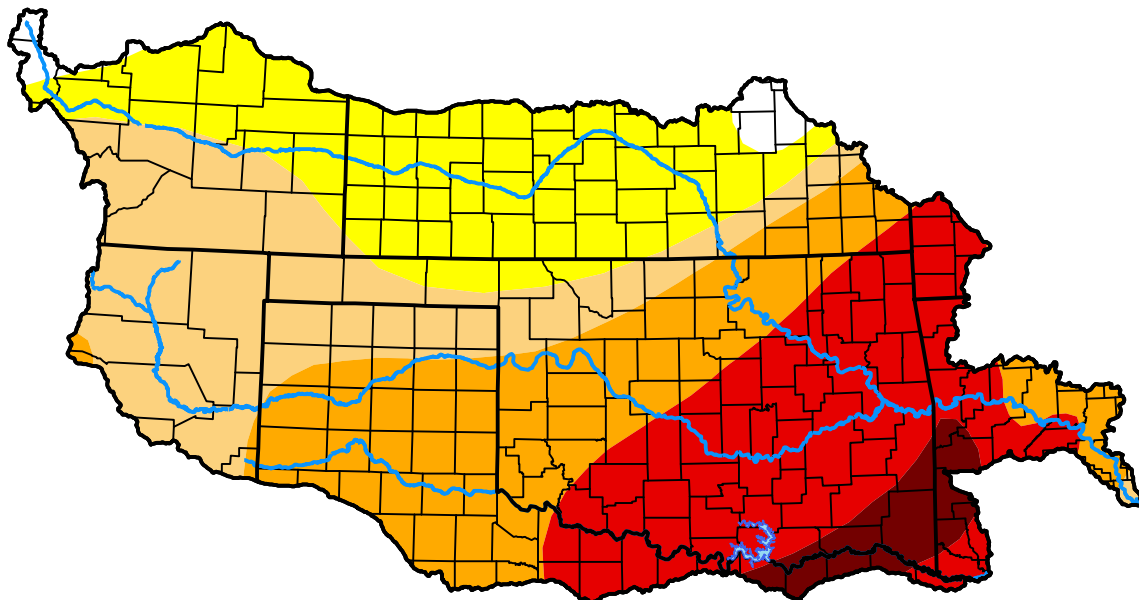
Arkansas Red Basin RFC

February 14, 2006
(Released Thursday, Feb. 16, 2006)

Valid 7 a.m. EST

Drought Conditions (Percent Area)

	None	D0	D1	D2	D3	D4
Current	1.63	23.05	23.80	24.44	23.28	3.80
Last Week <i>02-09-2006</i>	3.87	23.95	22.76	24.65	21.20	3.57
3 Months Ago <i>11-17-2005</i>	41.96	42.84	9.74	4.03	1.44	0.00
Start of Calendar Year <i>01-05-2006</i>	22.54	22.69	31.37	17.24	2.09	4.08
Start of Water Year <i>09-29-2005</i>	77.50	18.24	3.47	0.79	0.00	0.00
One Year Ago <i>02-17-2005</i>	89.06	8.90	1.35	0.68	0.00	0.00



Intensity:

- None
- D0 Abnormally Dry
- D1 Moderate Drought
- D2 Severe Drought
- D3 Extreme Drought
- D4 Exceptional Drought

The Drought Monitor focuses on broad-scale conditions. Local conditions may vary. For more information on the Drought Monitor, go to <https://droughtmonitor.unl.edu/About.aspx>

Author:

David Miskus
 NOAA/NWS/NCEP/CPC



droughtmonitor.unl.edu