

U.S. Drought Monitor

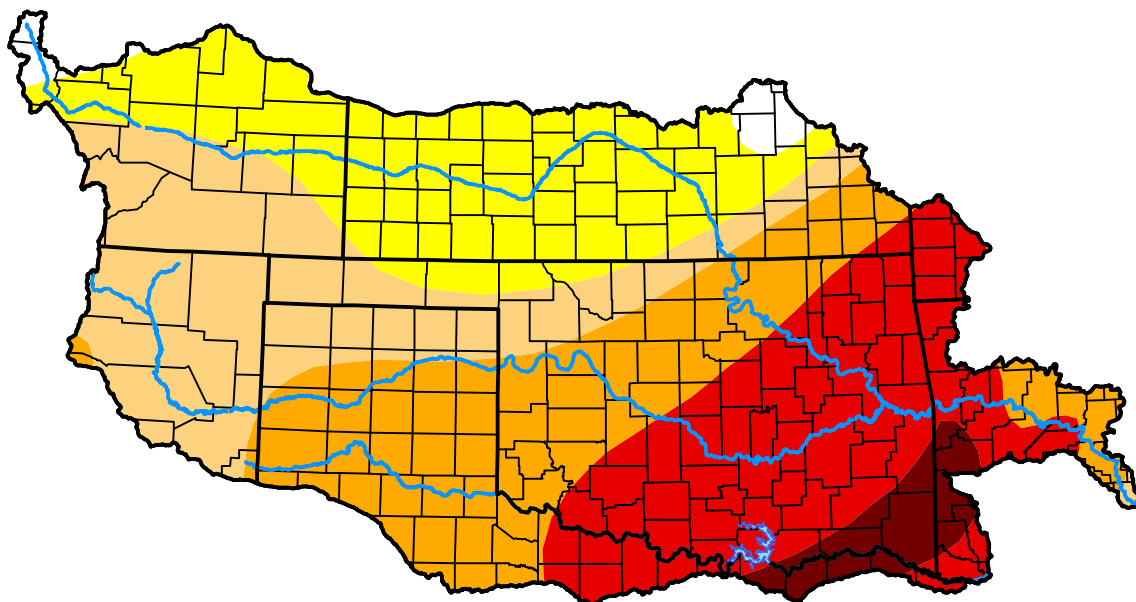
Arkansas Red Basin RFC

February 14, 2006
(Released Thursday, Feb. 16, 2006)

Valid 7 a.m. EST

Drought Conditions (Percent Area)

	None	D0-D4	D1-D4	D2-D4	D3-D4	D4
Current	1.63	98.37	75.32	51.51	27.07	3.80
Last Week <i>02-09-2006</i>	3.87	96.13	72.18	49.42	24.77	3.57
3 Months Ago <i>11-17-2005</i>	41.96	58.04	15.21	5.47	1.44	0.00
Start of Calendar Year <i>01-05-2006</i>	22.54	77.46	54.78	23.41	6.17	4.08
Start of Water Year <i>09-29-2005</i>	77.50	22.50	4.26	0.79	0.00	0.00
One Year Ago <i>02-17-2005</i>	89.06	10.94	2.04	0.68	0.00	0.00



Intensity:



The Drought Monitor focuses on broad-scale conditions. Local conditions may vary. For more information on the Drought Monitor, go to <https://droughtmonitor.unl.edu/About.aspx>

Author:

David Miskus
 NOAA/NWS/NCEP/CPC



droughtmonitor.unl.edu