

# U.S. Drought Monitor

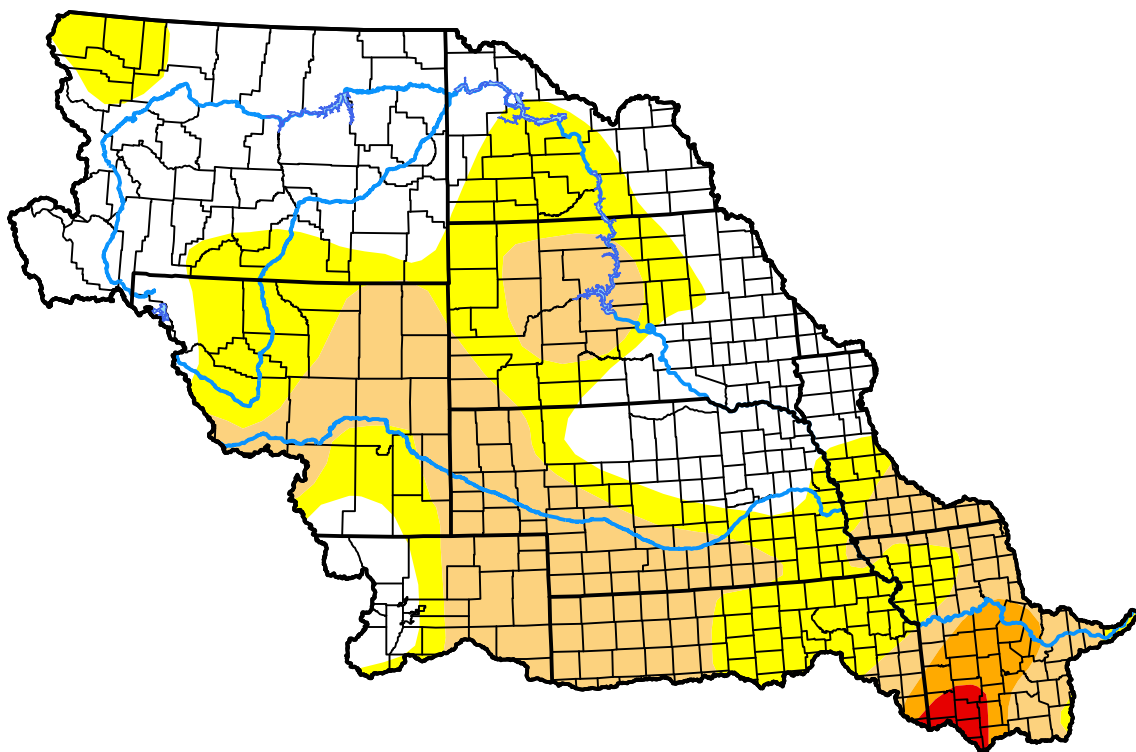
## Missouri Watershed

**April 18, 2006**  
 (Released Thursday, Apr. 20, 2006)

Valid 8 a.m. EDT

### Drought Conditions (Percent Area)

	None	D0	D1	D2	D3	D4
<b>Current</b>	39.76	29.31	28.16	2.15	0.62	0.00
<b>Last Week</b> <i>04-13-2006</i>	40.34	29.67	29.18	0.63	0.19	0.00
<b>3 Months Ago</b> <i>01-19-2006</i>	47.72	28.20	23.01	1.07	0.00	0.00
<b>Start of Calendar Year</b> <i>01-05-2006</i>	49.35	28.88	20.72	1.05	0.00	0.00
<b>Start of Water Year</b> <i>09-29-2005</i>	33.63	34.23	24.44	7.70	0.00	0.00
<b>One Year Ago</b> <i>04-21-2005</i>	30.59	12.72	16.36	19.75	13.21	7.37



### Intensity:



The Drought Monitor focuses on broad-scale conditions. Local conditions may vary. For more information on the Drought Monitor, go to <https://droughtmonitor.unl.edu/About.aspx>

### Author:

Richard Tinker  
 CPC/NOAA/NWS/NCEP



[droughtmonitor.unl.edu](https://droughtmonitor.unl.edu)