

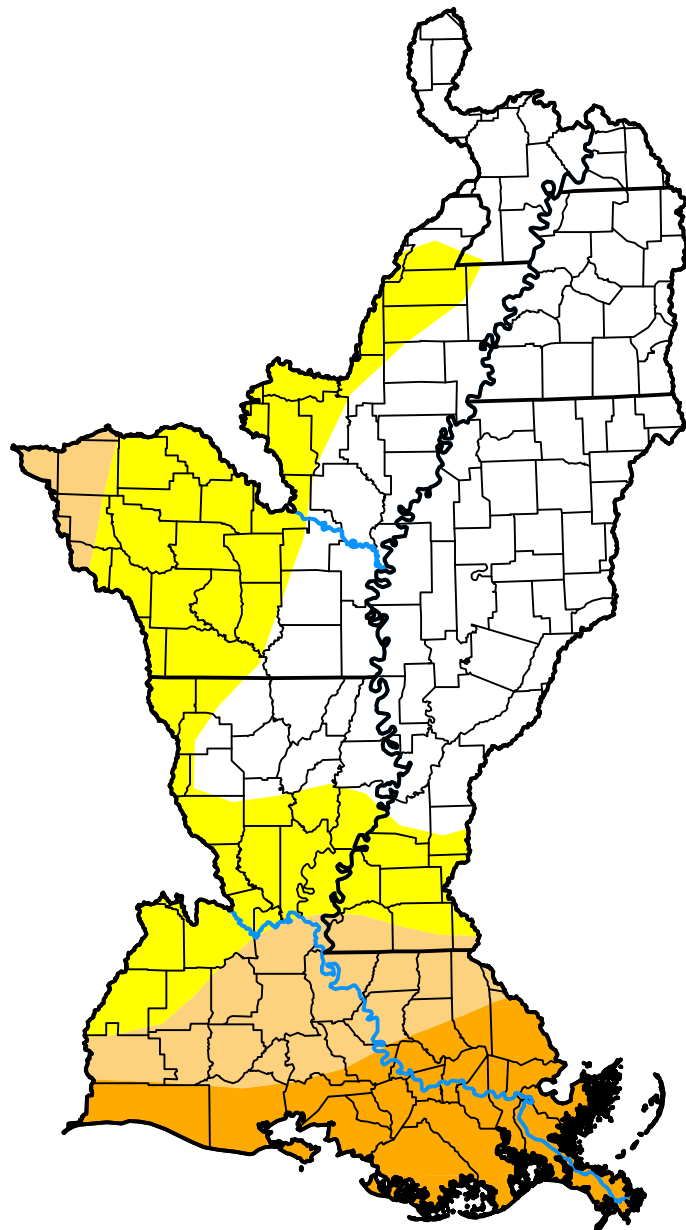
U.S. Drought Monitor

Lower Mississippi Watershed

May 16, 2006

(Released Thursday, May. 18, 2006)

Valid 8 a.m. EDT



Drought Conditions (Percent Area)

	None	D0	D1	D2	D3	D4
Current	49.56	25.37	12.41	12.66	0.00	0.00
Last Week <i>05-11-2006</i>	41.76	35.32	15.93	7.00	0.00	0.00
3 Months Ago <i>02-16-2006</i>	66.91	19.78	4.90	4.80	3.22	0.39
Start of Calendar Year <i>01-05-2006</i>	31.92	29.33	20.60	14.50	2.79	0.87
Start of Water Year <i>09-29-2005</i>	97.20	2.80	0.00	0.00	0.00	0.00
One Year Ago <i>05-19-2005</i>	33.32	50.77	15.91	0.00	0.00	0.00

Intensity:

- None
- D0 Abnormally Dry
- D1 Moderate Drought
- D2 Severe Drought
- D3 Extreme Drought
- D4 Exceptional Drought

The Drought Monitor focuses on broad-scale conditions. Local conditions may vary. For more information on the Drought Monitor, go to <https://droughtmonitor.unl.edu/About.aspx>

Author:

David Miskus
NOAA/NWS/NCEP/CPC



droughtmonitor.unl.edu