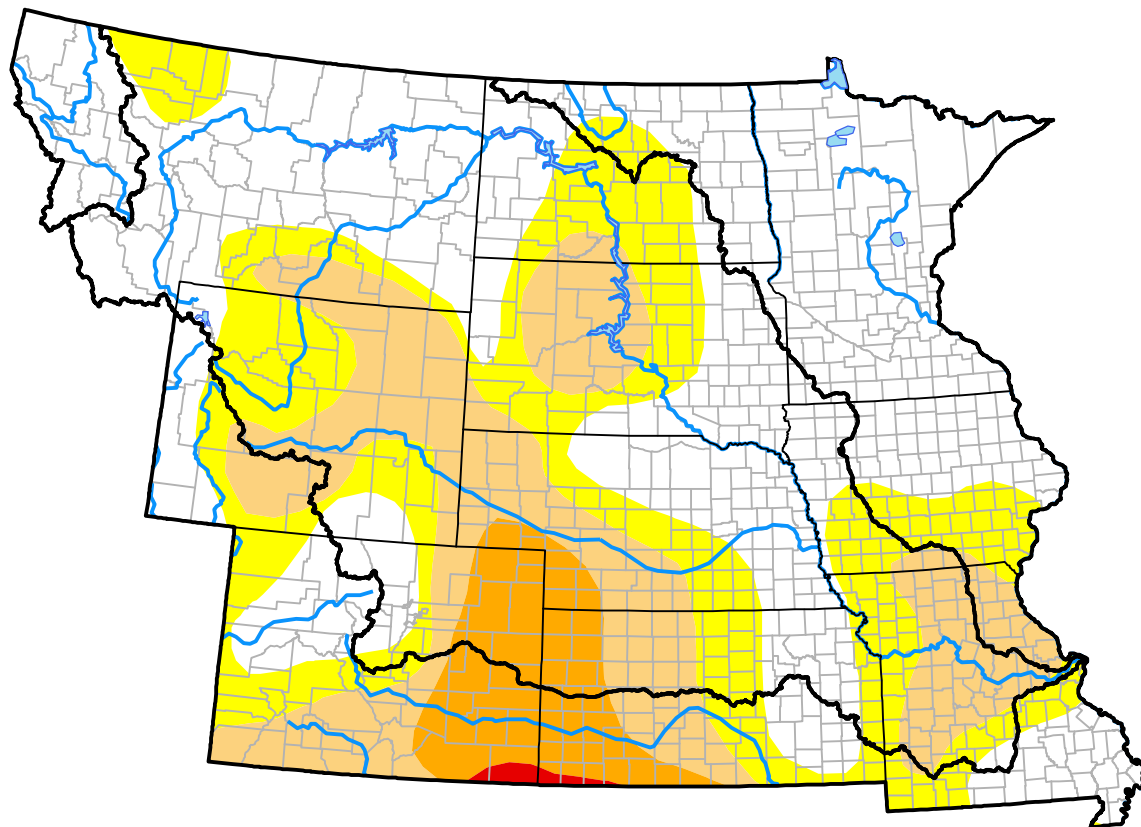


U.S. Drought Monitor

Missouri River Basin RDEWS

May 16, 2006
 (Released Thursday, May. 18, 2006)
 Valid 8 a.m. EDT



Drought Conditions (Percent Area)

	None	D0	D1	D2	D3	D4
Current	41.93	28.05	24.83	5.19	0.00	0.00
Last Week <i>05-11-2006</i>	42.48	28.26	26.16	3.11	0.00	0.00
3 Months Ago <i>02-16-2006</i>	40.31	29.77	26.73	3.00	0.19	0.00
Start of Calendar Year <i>01-05-2006</i>	49.30	28.96	20.68	1.06	0.00	0.00
Start of Water Year <i>09-29-2005</i>	33.60	34.17	24.55	7.68	0.00	0.00
One Year Ago <i>05-19-2005</i>	35.18	12.78	26.26	22.42	3.37	0.00

Intensity:



The Drought Monitor focuses on broad-scale conditions. Local conditions may vary. For more information on the Drought Monitor, go to <https://droughtmonitor.unl.edu/About.aspx>

Author:

David Miskus
 NOAA/NWS/NCEP/CPC

