

U.S. Drought Monitor

Arkansas-White-Red Watershed

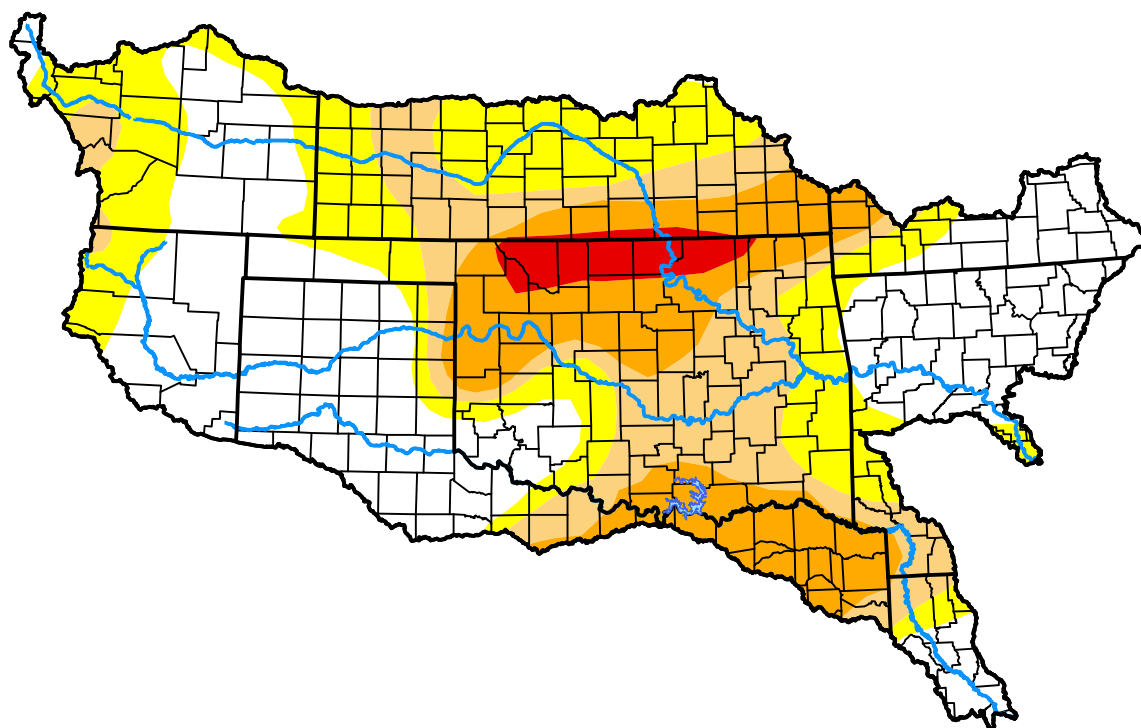
November 7, 2006

(Released Thursday, Nov. 9, 2006)

Valid 7 a.m. EST

Drought Conditions (Percent Area)

	None	D0	D1	D2	D3	D4
Current	38.17	25.13	17.74	16.04	2.92	0.00
Last Week <i>11-02-2006</i>	40.42	20.76	10.77	21.47	6.58	0.00
3 Months Ago <i>08-10-2006</i>	0.00	12.84	35.17	26.45	18.21	7.32
Start of Calendar Year <i>01-05-2006</i>	21.06	21.85	28.85	19.40	3.67	5.17
Start of Water Year <i>09-28-2006</i>	20.11	28.51	32.59	11.59	6.11	1.08
One Year Ago <i>11-10-2005</i>	38.84	37.45	17.15	4.17	2.39	0.00



Intensity:



The Drought Monitor focuses on broad-scale conditions. Local conditions may vary. For more information on the Drought Monitor, go to <https://droughtmonitor.unl.edu/About.aspx>

Author:

Douglas Le Comte
CPC/NOAA



droughtmonitor.unl.edu