

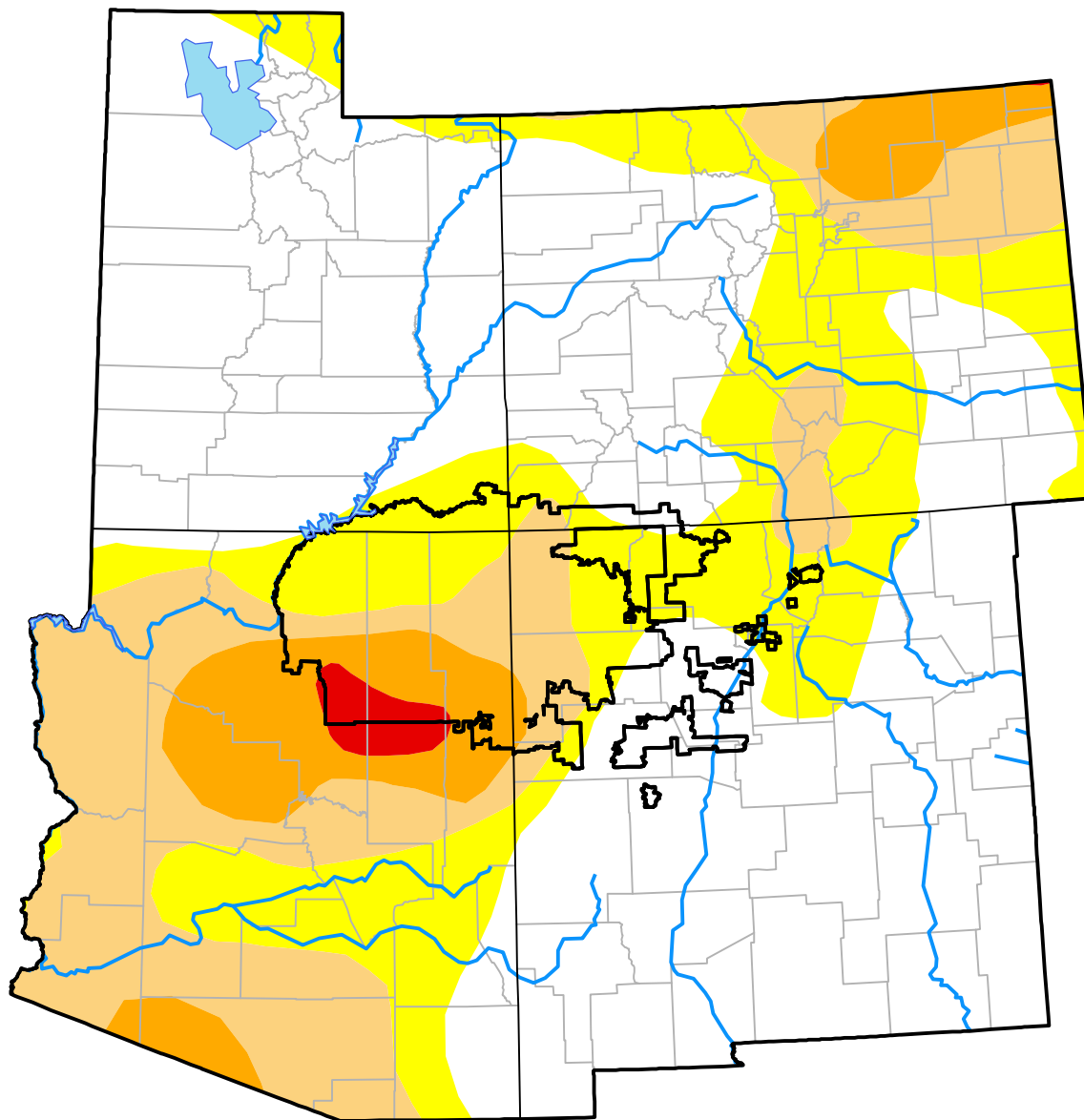
Corners RDEWS and Surrounding Areas

(Released Thursday, Nov. 9, 2006)

Valid 7 a.m. EST

Drought Conditions (Percent Area)

| | None | D0 | D1 | D2 | D3 | D4 |
|--|-------|-------|-------|-------|------|------|
| Current | 53.37 | 21.30 | 17.45 | 7.06 | 0.82 | 0.00 |
| Last Week <i>11-02-2006</i> | 52.27 | 21.47 | 18.37 | 7.06 | 0.82 | 0.00 |
| 3 Months Ago <i>08-10-2006</i> | 15.98 | 21.76 | 34.06 | 22.13 | 6.07 | 0.00 |
| Start of Calendar Year <i>01-05-2006</i> | 32.36 | 48.78 | 18.87 | 0.00 | 0.00 | 0.00 |
| Start of Water Year <i>09-28-2006</i> | 37.21 | 30.54 | 22.10 | 8.18 | 1.96 | 0.00 |
| One Year Ago <i>11-10-2005</i> | 50.46 | 40.10 | 9.44 | 0.00 | 0.00 | 0.00 |



Intensity:

- None
- D0 Abnormally Dry
- D1 Moderate Drought
- D2 Severe Drought
- D3 Extreme Drought
- D4 Exceptional Drought

The Drought Monitor focuses on broad-scale conditions. Local conditions may vary. For more information on the Drought Monitor, go to <https://droughtmonitor.unl.edu/About.aspx>

Author:

Douglas Le Comte
CPC/NOAA

