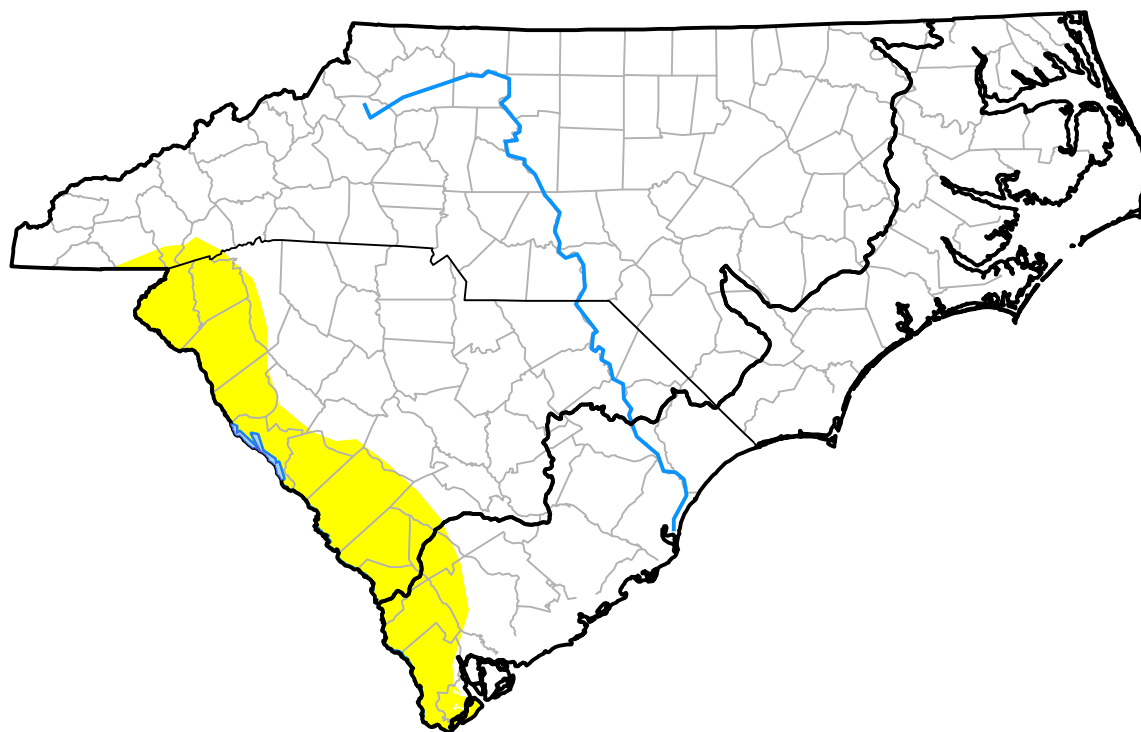


U.S. Drought Monitor

Coastal Carolinas RDEWS

November 7, 2006
 (Released Thursday, Nov. 9, 2006)
 Valid 7 a.m. EST



Drought Conditions (Percent Area)

	None	D0	D1	D2	D3	D4
Current	93.41	6.59	0.00	0.00	0.00	0.00
Last Week <i>11-02-2006</i>	93.41	6.59	0.00	0.00	0.00	0.00
3 Months Ago <i>08-10-2006</i>	74.37	25.63	0.00	0.00	0.00	0.00
Start of Calendar Year <i>01-05-2006</i>	100.00	0.00	0.00	0.00	0.00	0.00
Start of Water Year <i>09-28-2006</i>	97.91	2.09	0.00	0.00	0.00	0.00
One Year Ago <i>11-10-2005</i>	96.38	3.62	0.00	0.00	0.00	0.00

Intensity:

- None
- D0 Abnormally Dry
- D1 Moderate Drought
- D2 Severe Drought
- D3 Extreme Drought
- D4 Exceptional Drought

The Drought Monitor focuses on broad-scale conditions. Local conditions may vary. For more information on the Drought Monitor, go to <https://droughtmonitor.unl.edu/About.aspx>

Author:

Douglas Le Comte
 CPC/NOAA

