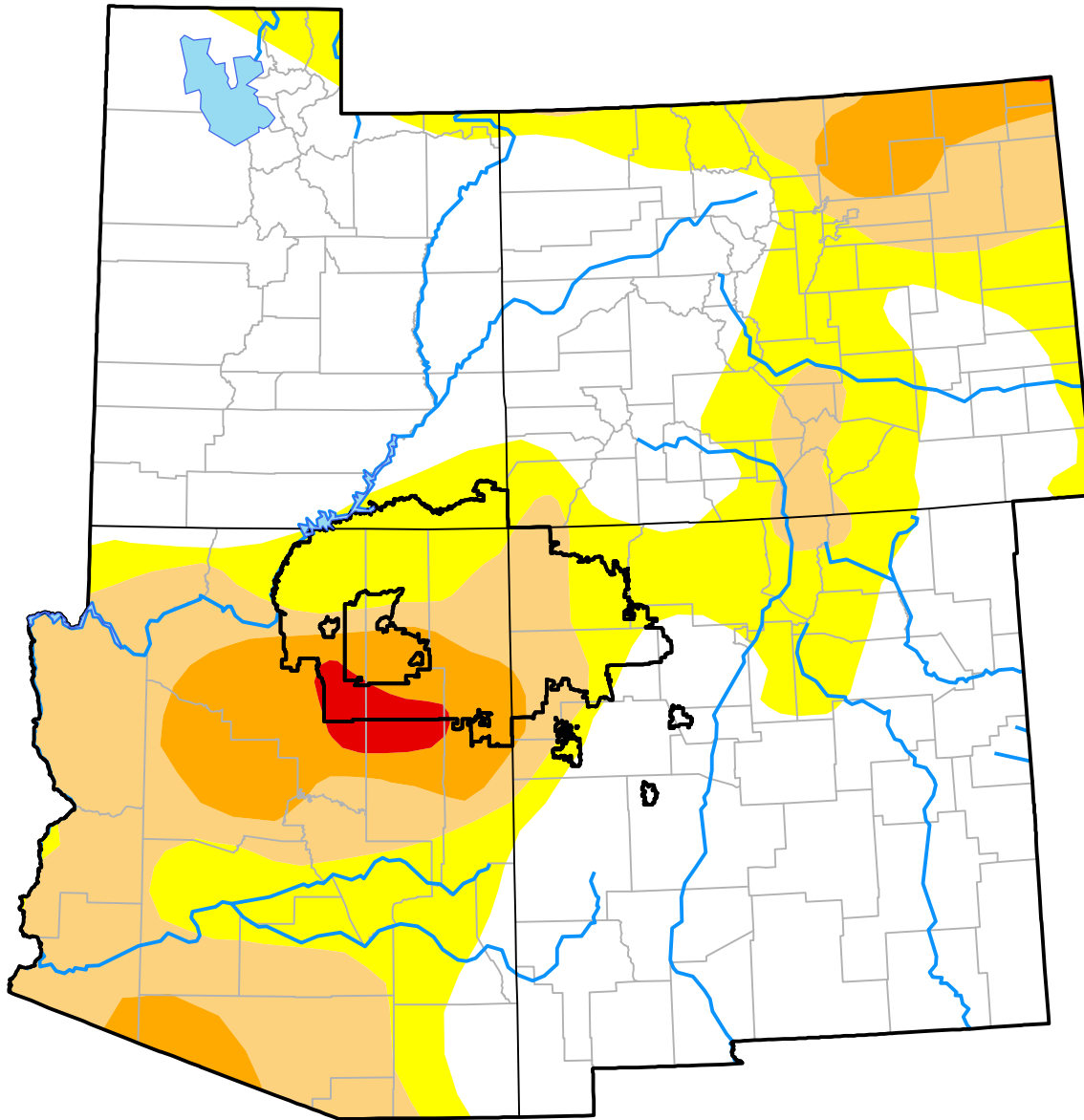


U.S. Drought Monitor

Navajo RDEWS

November 7, 2006
 (Released Thursday, Nov. 9, 2006)
 Valid 7 a.m. EST



Drought Conditions (Percent Area)

	None	D0-D4	D1-D4	D2-D4	D3-D4	D4
Current	2.99	97.01	53.55	22.98	6.56	0.00
Last Week <i>11-02-2006</i>	2.99	97.01	53.55	22.98	6.56	0.00
3 Months Ago <i>08-10-2006</i>	0.00	100.00	84.53	49.58	19.29	0.00
Start of Calendar Year <i>01-05-2006</i>	2.14	97.86	45.57	0.00	0.00	0.00
Start of Water Year <i>09-28-2006</i>	0.88	99.12	84.99	35.52	15.64	0.00
One Year Ago <i>11-10-2005</i>	11.18	88.82	34.85	0.00	0.00	0.00

Intensity:

- None
- D0 Abnormally Dry
- D1 Moderate Drought
- D2 Severe Drought
- D3 Extreme Drought
- D4 Exceptional Drought

The Drought Monitor focuses on broad-scale conditions. Local conditions may vary. For more information on the Drought Monitor, go to <https://droughtmonitor.unl.edu/About.aspx>

Author:

Douglas Le Comte
 CPC/NOAA

