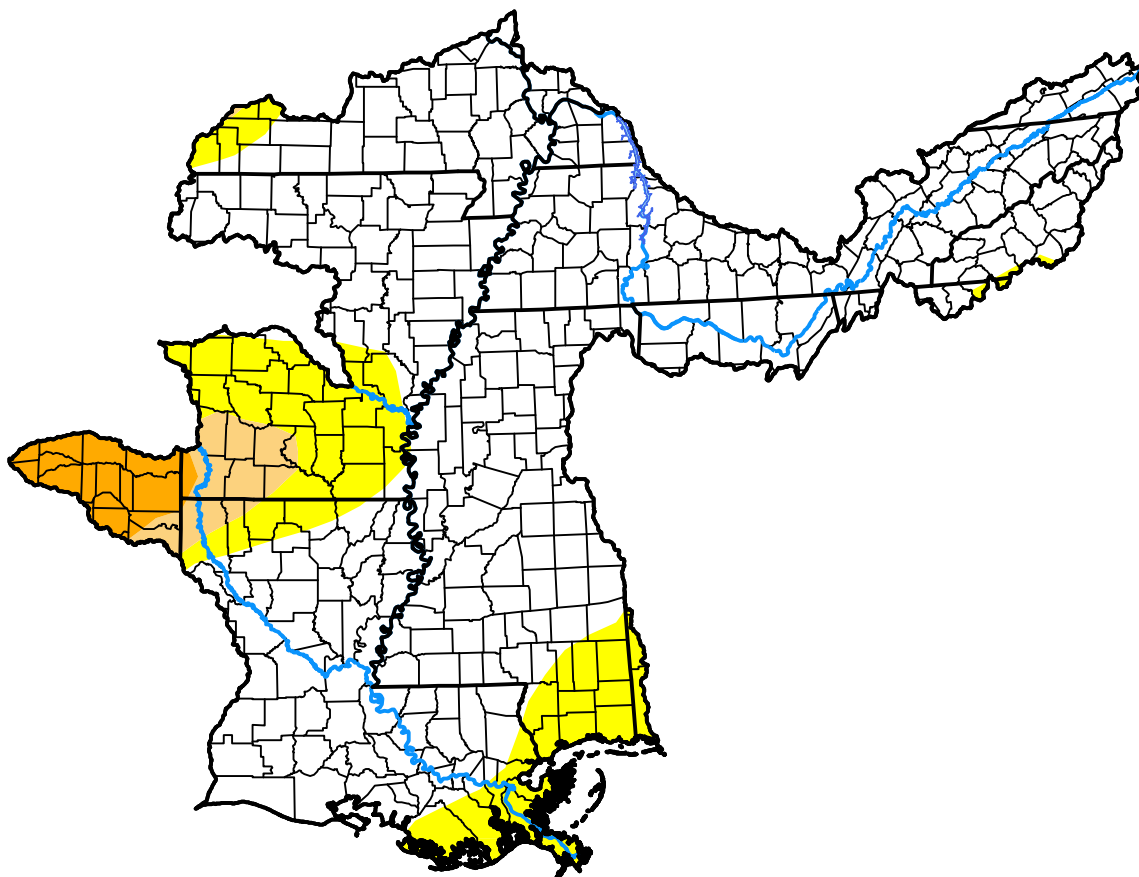


U.S. Drought Monitor

Lower Mississippi RFC

November 7, 2006
 (Released Thursday, Nov. 9, 2006)
 Valid 7 a.m. EST



Drought Conditions (Percent Area)

	None	D0-D4	D1-D4	D2-D4	D3-D4	D4
Current	79.56	20.44	6.00	3.05	0.00	0.00
Last Week <i>11-02-2006</i>	62.85	37.15	12.85	5.28	3.09	0.00
3 Months Ago <i>08-10-2006</i>	7.18	92.82	75.42	37.31	11.92	0.74
Start of Calendar Year <i>01-05-2006</i>	44.56	55.44	32.81	19.19	6.18	2.50
Start of Water Year <i>09-28-2006</i>	26.52	73.48	20.20	3.67	1.81	0.74
One Year Ago <i>11-10-2005</i>	5.86	94.14	60.97	2.07	1.02	0.00

Intensity:

- None
- D0 Abnormally Dry
- D1 Moderate Drought
- D2 Severe Drought
- D3 Extreme Drought
- D4 Exceptional Drought

The Drought Monitor focuses on broad-scale conditions. Local conditions may vary. For more information on the Drought Monitor, go to <https://droughtmonitor.unl.edu/About.aspx>

Author:

Douglas Le Comte
 CPC/NOAA

