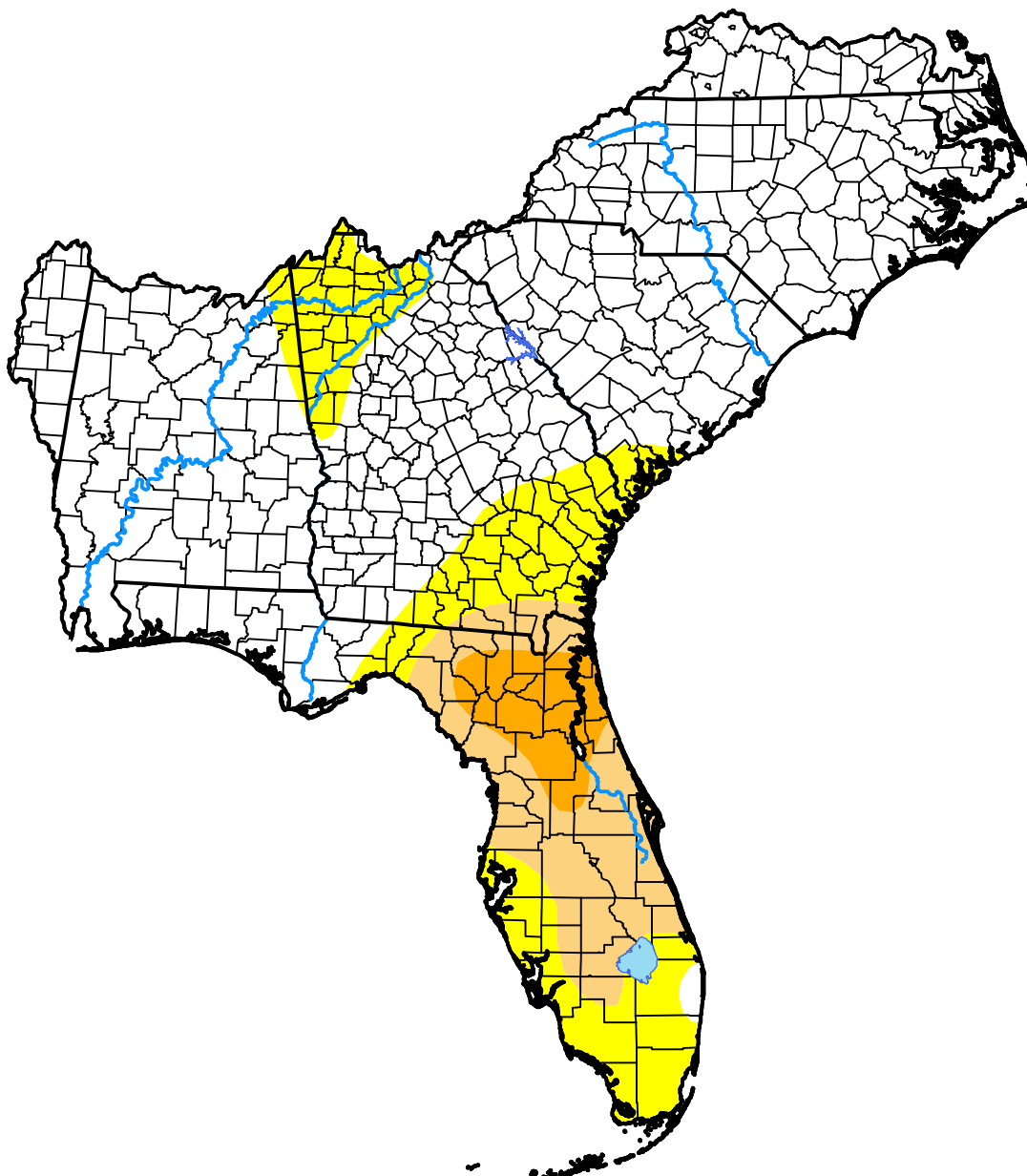


# U.S. Drought Monitor Southeast RFC

January 23, 2007  
(Released Thursday, Jan. 25, 2007)

Valid 7 a.m. EST



Drought Conditions (Percent Area)

	None	D0-D4	D1-D4	D2-D4	D3-D4	D4
<b>Current</b>	71.29	28.71	12.87	3.64	0.00	0.00
<b>Last Week</b> <i>01-18-2007</i>	60.64	39.36	13.01	3.27	0.00	0.00
<b>3 Months Ago</b> <i>10-26-2006</i>	37.86	62.14	32.74	0.00	0.00	0.00
<b>Start of Calendar Year</b> <i>01-04-2007</i>	48.04	51.96	11.67	1.69	0.00	0.00
<b>Start of Water Year</b> <i>09-28-2006</i>	47.80	52.20	27.01	0.00	0.00	0.00
<b>One Year Ago</b> <i>01-26-2006</i>	89.10	10.90	0.00	0.00	0.00	0.00

**Intensity:**



The Drought Monitor focuses on broad-scale conditions. Local conditions may vary. For more information on the Drought Monitor, go to <https://droughtmonitor.unl.edu/About.aspx>

**Author:**

David Miskus  
NOAA/NWS/NCEP/CPC

