

U.S. Drought Monitor

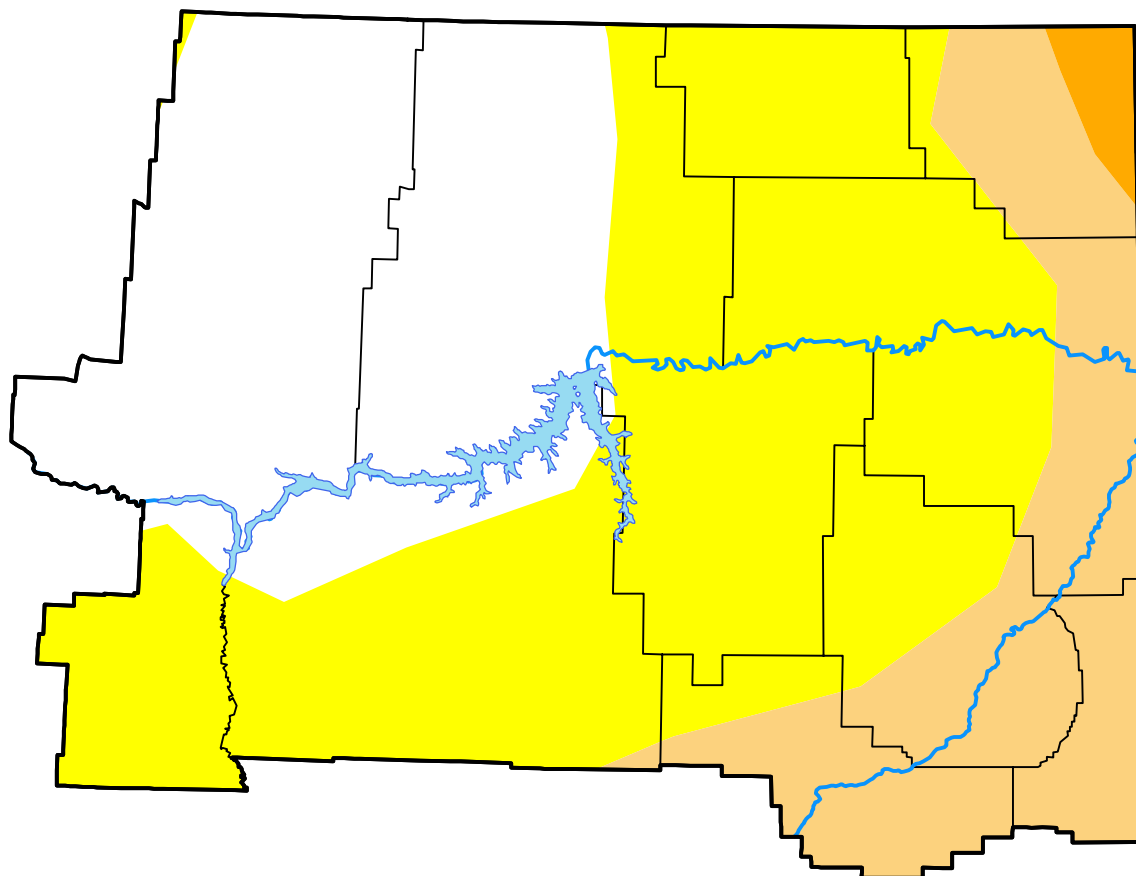
Glasgow, MT WFO

January 23, 2007
 (Released Thursday, Jan. 25, 2007)

Valid 7 a.m. EST

Drought Conditions (Percent Area)

	None	D0	D1	D2	D3	D4
Current	31.97	48.15	18.69	1.19	0.00	0.00
Last Week <i>01-18-2007</i>	31.97	48.15	18.69	1.19	0.00	0.00
3 Months Ago <i>10-26-2006</i>	0.00	0.00	28.91	71.09	0.00	0.00
Start of Calendar Year <i>01-04-2007</i>	31.33	48.79	18.69	1.19	0.00	0.00
Start of Water Year <i>09-28-2006</i>	0.00	0.00	5.41	94.59	0.00	0.00
One Year Ago <i>01-26-2006</i>	82.91	17.09	0.00	0.00	0.00	0.00



Intensity:



The Drought Monitor focuses on broad-scale conditions. Local conditions may vary. For more information on the Drought Monitor, go to <https://droughtmonitor.unl.edu/About.aspx>

Author:

David Miskus
 NOAA/NWS/NCEP/CPC



droughtmonitor.unl.edu