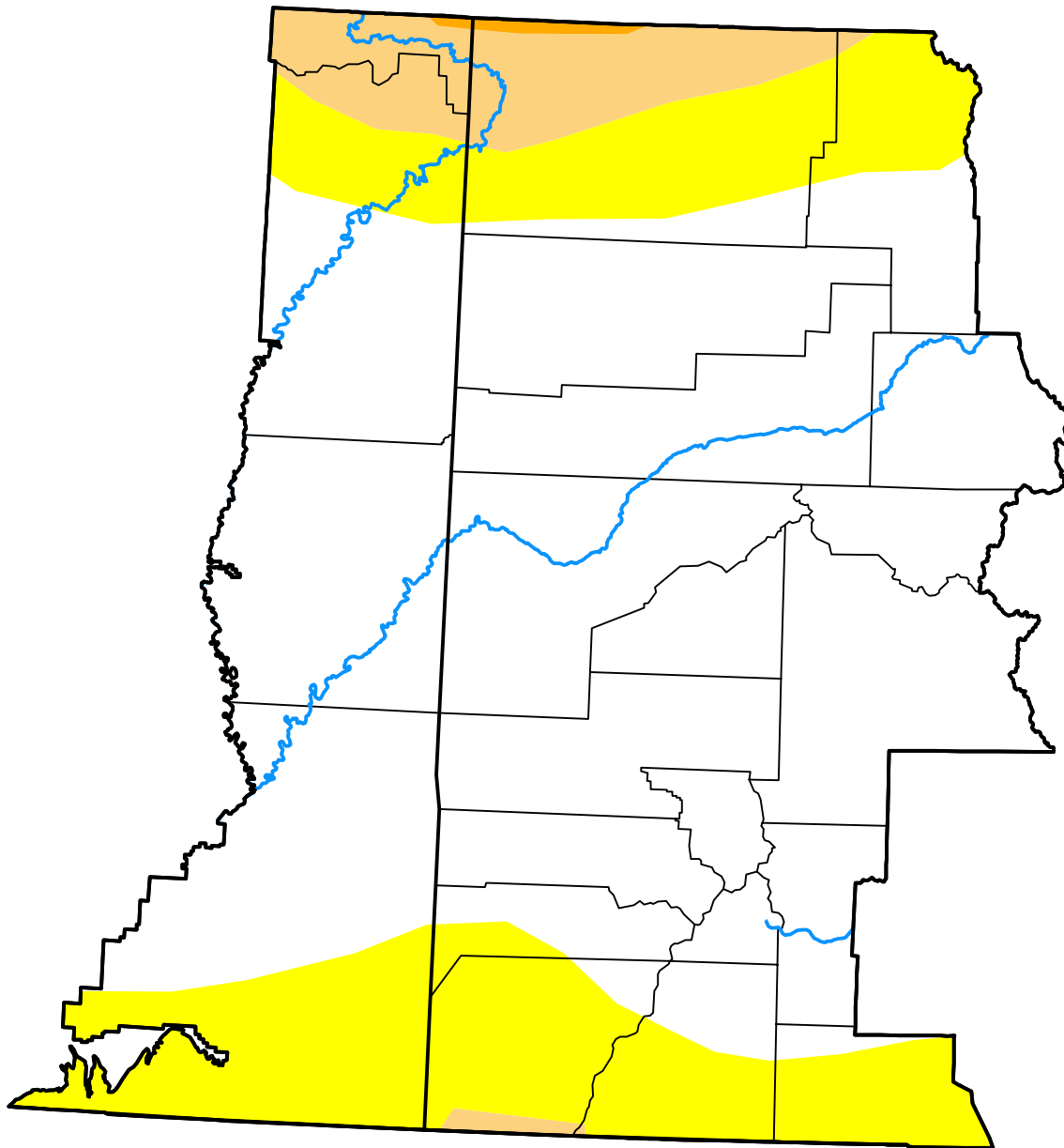


U.S. Drought Monitor

Grand Junction, CO WFO

January 23, 2007
 (Released Thursday, Jan. 25, 2007)
 Valid 7 a.m. EST



Drought Conditions (Percent Area)

	None	D0-D4	D1-D4	D2-D4	D3-D4	D4
Current	70.63	29.37	6.57	0.29	0.00	0.00
Last Week <i>01-18-2007</i>	74.82	25.18	6.57	0.29	0.00	0.00
3 Months Ago <i>10-26-2006</i>	72.30	27.70	4.68	0.00	0.00	0.00
Start of Calendar Year <i>01-04-2007</i>	75.35	24.65	4.66	0.00	0.00	0.00
Start of Water Year <i>09-28-2006</i>	5.20	94.80	16.42	0.00	0.00	0.00
One Year Ago <i>01-26-2006</i>	41.45	58.55	9.20	0.00	0.00	0.00

Intensity:

- None
- D0 Abnormally Dry
- D1 Moderate Drought
- D2 Severe Drought
- D3 Extreme Drought
- D4 Exceptional Drought

The Drought Monitor focuses on broad-scale conditions. Local conditions may vary. For more information on the Drought Monitor, go to <https://droughtmonitor.unl.edu/About.aspx>

Author:

David Miskus
 NOAA/NWS/NCEP/CPC

