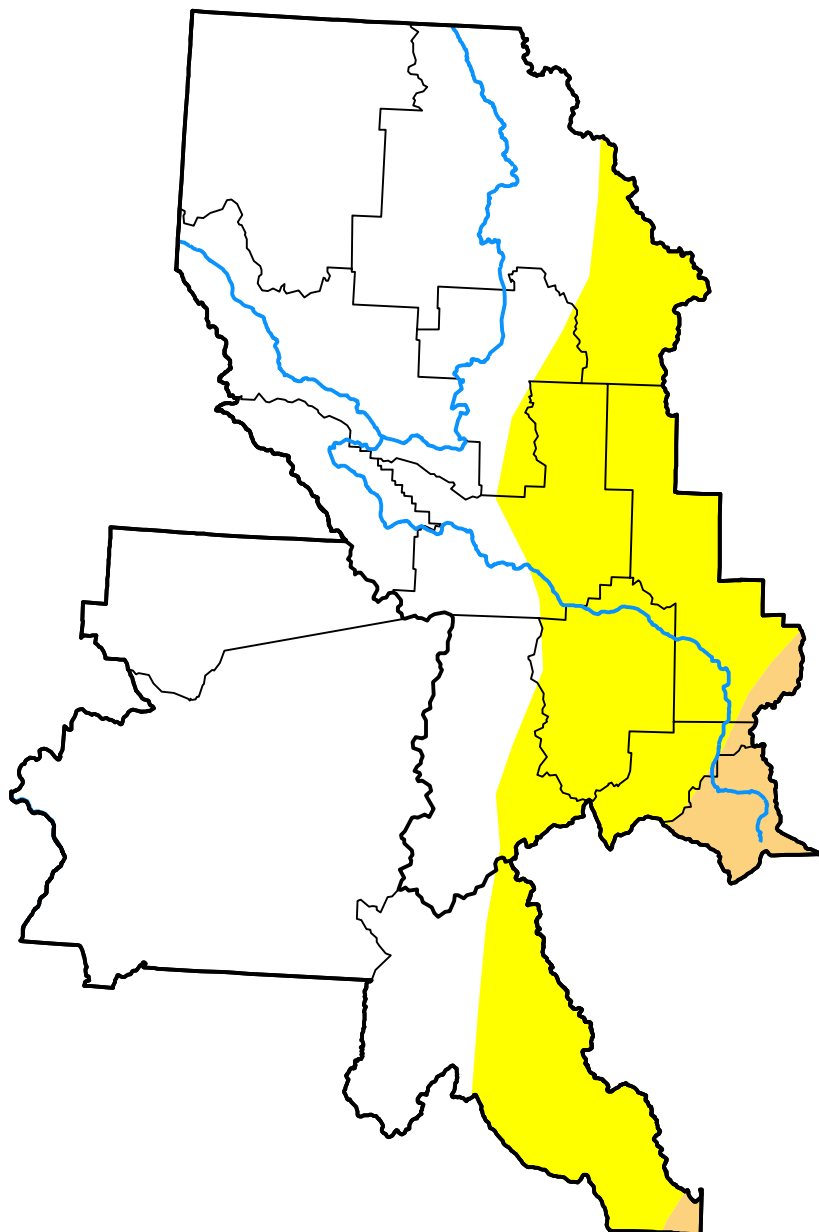


U.S. Drought Monitor

Missoula, MT WFO

January 23, 2007
 (Released Thursday, Jan. 25, 2007)

Valid 7 a.m. EST



Drought Conditions (Percent Area)

	None	D0	D1	D2	D3	D4
Current	70.62	26.82	2.56	0.00	0.00	0.00
Last Week <i>01-18-2007</i>	70.62	26.89	2.49	0.00	0.00	0.00
3 Months Ago <i>10-26-2006</i>	14.43	29.45	53.81	2.31	0.00	0.00
Start of Calendar Year <i>01-04-2007</i>	69.71	28.47	1.83	0.00	0.00	0.00
Start of Water Year <i>09-28-2006</i>	0.56	37.96	55.06	6.42	0.00	0.00
One Year Ago <i>01-26-2006</i>	83.84	14.99	1.17	0.00	0.00	0.00

Intensity:

- None
- D0 Abnormally Dry
- D1 Moderate Drought
- D2 Severe Drought
- D3 Extreme Drought
- D4 Exceptional Drought

The Drought Monitor focuses on broad-scale conditions. Local conditions may vary. For more information on the Drought Monitor, go to <https://droughtmonitor.unl.edu/About.aspx>

Author:

David Miskus
 NOAA/NWS/NCEP/CPC

