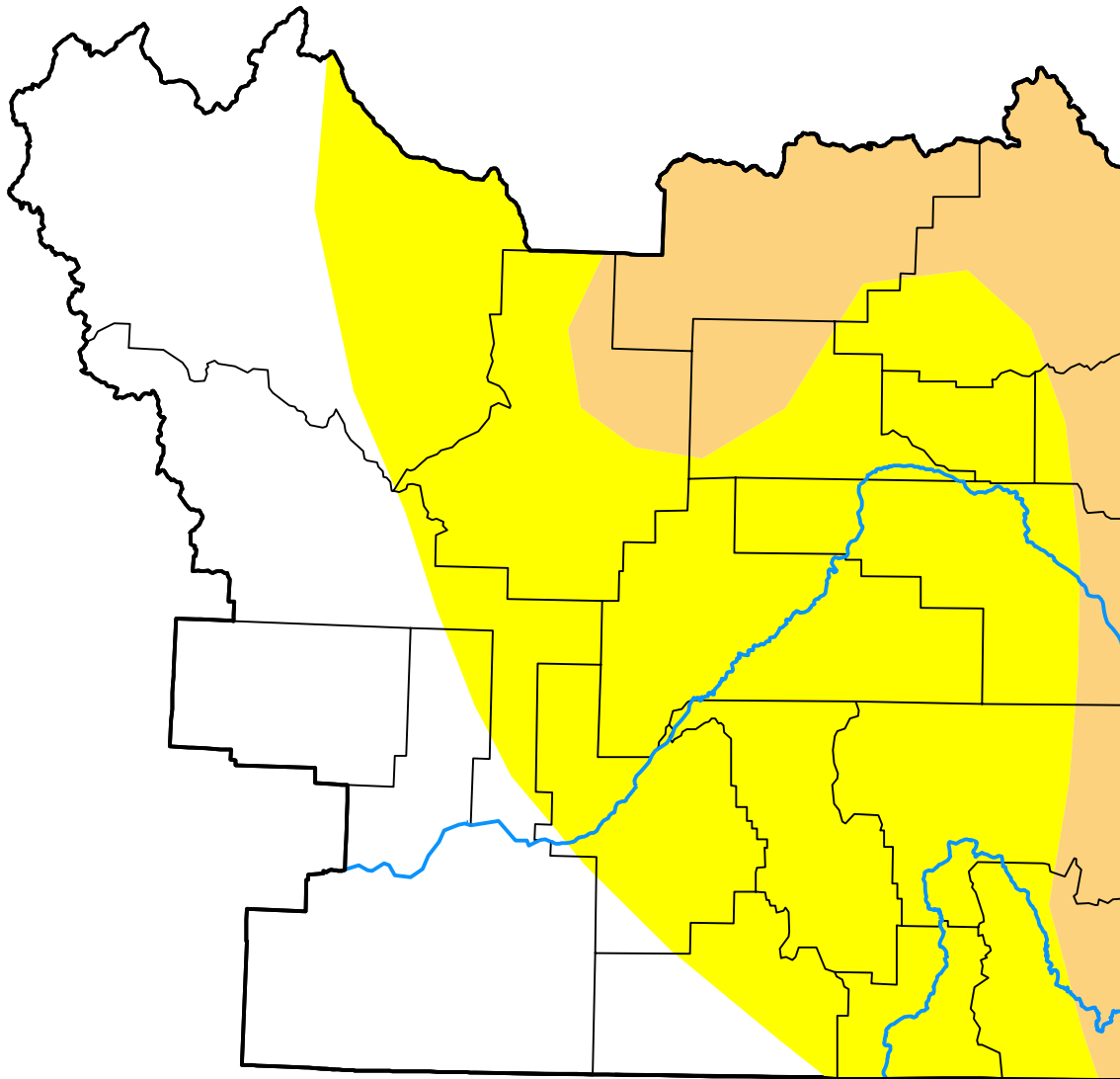


U.S. Drought Monitor

Pocatello, ID WFO

January 23, 2007
 (Released Thursday, Jan. 25, 2007)
 Valid 7 a.m. EST



Drought Conditions (Percent Area)

	None	D0	D1	D2	D3	D4
Current	33.06	49.50	17.44	0.00	0.00	0.00
Last Week <i>01-18-2007</i>	33.06	49.50	17.44	0.00	0.00	0.00
3 Months Ago <i>10-26-2006</i>	22.16	77.77	0.07	0.00	0.00	0.00
Start of Calendar Year <i>01-04-2007</i>	34.83	57.16	8.02	0.00	0.00	0.00
Start of Water Year <i>09-28-2006</i>	0.59	99.40	0.01	0.00	0.00	0.00
One Year Ago <i>01-26-2006</i>	63.51	36.49	0.00	0.00	0.00	0.00

Intensity:



The Drought Monitor focuses on broad-scale conditions. Local conditions may vary. For more information on the Drought Monitor, go to <https://droughtmonitor.unl.edu/About.aspx>

Author:

David Miskus
 NOAA/NWS/NCEP/CPC

