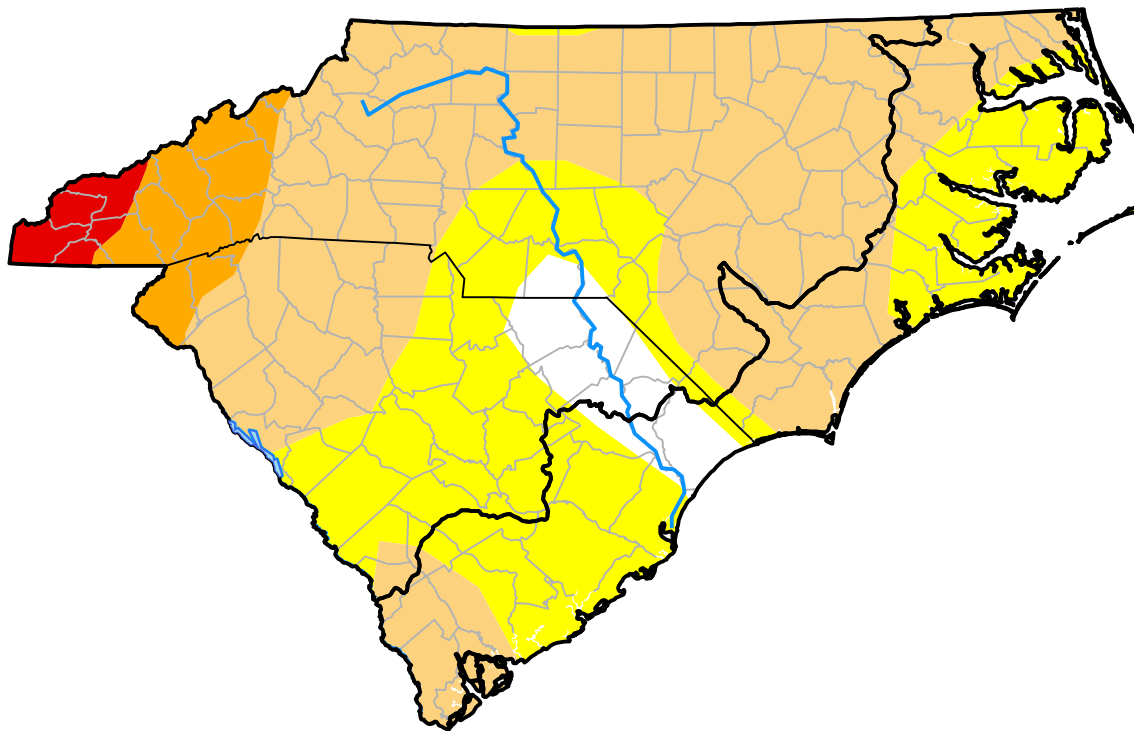


Carolinas RDEWS and Surrounding Areas

Drought Conditions (Percent Area)

	None	D0	D1	D2	D3	D4
Current	5.77	33.00	53.54	5.79	1.89	0.00
Last Week <i>07-12-2007</i>	5.62	35.07	52.00	5.39	1.92	0.00
3 Months Ago <i>04-19-2007</i>	60.62	27.54	11.84	0.00	0.00	0.00
Start of Calendar Year <i>01-04-2007</i>	96.43	3.57	0.00	0.00	0.00	0.00
Start of Water Year <i>09-28-2006</i>	93.20	6.80	0.00	0.00	0.00	0.00
One Year Ago <i>07-20-2006</i>	48.16	32.60	19.24	0.00	0.00	0.00



Intensity:

- None
- D0 Abnormally Dry
- D1 Moderate Drought
- D2 Severe Drought
- D3 Extreme Drought
- D4 Exceptional Drought

The Drought Monitor focuses on broad-scale conditions. Local conditions may vary. For more information on the Drought Monitor, go to <https://droughtmonitor.unl.edu/About.aspx>

Author:

Brad Rippey
U.S. Department of Agriculture

