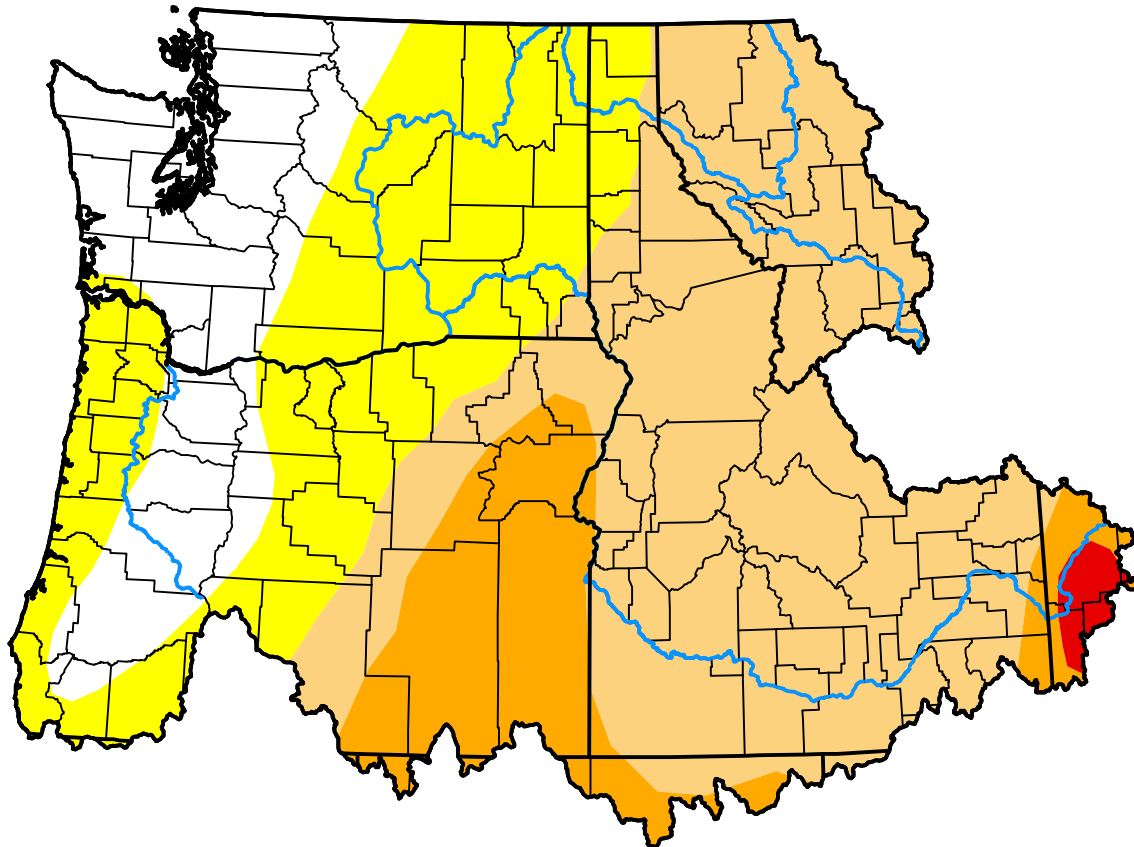


# U.S. Drought Monitor Northwest RFC

**July 17, 2007**  
(Released Thursday, Jul. 19, 2007)  
Valid 8 a.m. EDT



*Drought Conditions (Percent Area)*

	None	D0	D1	D2	D3	D4
<b>Current</b>	17.30	27.16	42.29	12.40	0.85	0.00
<b>Last Week</b> <i>07-12-2007</i>	19.25	28.72	38.78	12.45	0.80	0.00
<b>3 Months Ago</b> <i>04-19-2007</i>	43.76	38.52	16.99	0.73	0.00	0.00
<b>Start of Calendar Year</b> <i>01-04-2007</i>	86.96	10.96	1.91	0.13	0.03	0.00
<b>Start of Water Year</b> <i>09-28-2006</i>	42.78	42.03	14.46	0.73	0.00	0.00
<b>One Year Ago</b> <i>07-20-2006</i>	96.46	3.54	0.00	0.00	0.00	0.00

***Intensity:***

- None
- D0 Abnormally Dry
- D1 Moderate Drought
- D2 Severe Drought
- D3 Extreme Drought
- D4 Exceptional Drought

*The Drought Monitor focuses on broad-scale conditions. Local conditions may vary. For more information on the Drought Monitor, go to <https://droughtmonitor.unl.edu/About.aspx>*

***Author:***

Brad Rippey  
U.S. Department of Agriculture

