

U.S. Drought Monitor

Ohio RFC

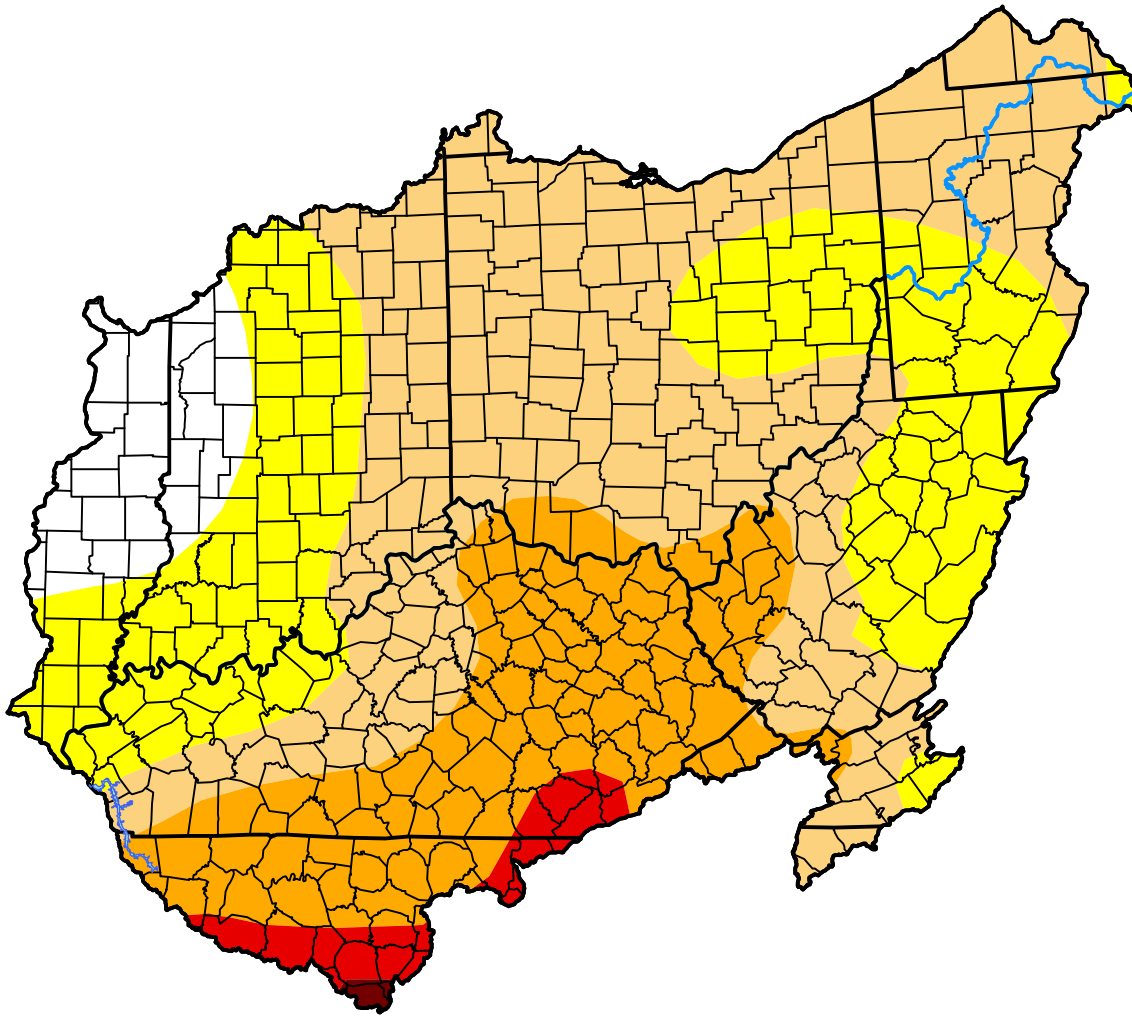
July 17, 2007

(Released Thursday, Jul. 19, 2007)

Valid 8 a.m. EDT

Drought Conditions (Percent Area)

	None	D0-D4	D1-D4	D2-D4	D3-D4	D4
Current	6.75	93.25	65.21	22.95	2.91	0.18
Last Week <i>07-12-2007</i>	7.51	92.49	59.96	20.92	2.90	0.18
3 Months Ago <i>04-19-2007</i>	87.55	12.45	3.46	0.20	0.00	0.00
Start of Calendar Year <i>01-04-2007</i>	70.01	29.99	0.00	0.00	0.00	0.00
Start of Water Year <i>09-28-2006</i>	98.37	1.63	0.75	0.00	0.00	0.00
One Year Ago <i>07-20-2006</i>	99.74	0.26	0.00	0.00	0.00	0.00



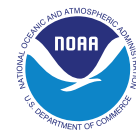
Intensity:

- None
- D0 Abnormally Dry
- D1 Moderate Drought
- D2 Severe Drought
- D3 Extreme Drought
- D4 Exceptional Drought

The Drought Monitor focuses on broad-scale conditions. Local conditions may vary. For more information on the Drought Monitor, go to <https://droughtmonitor.unl.edu/About.aspx>

Author:

Brad Rippey
U.S. Department of Agriculture



droughtmonitor.unl.edu