

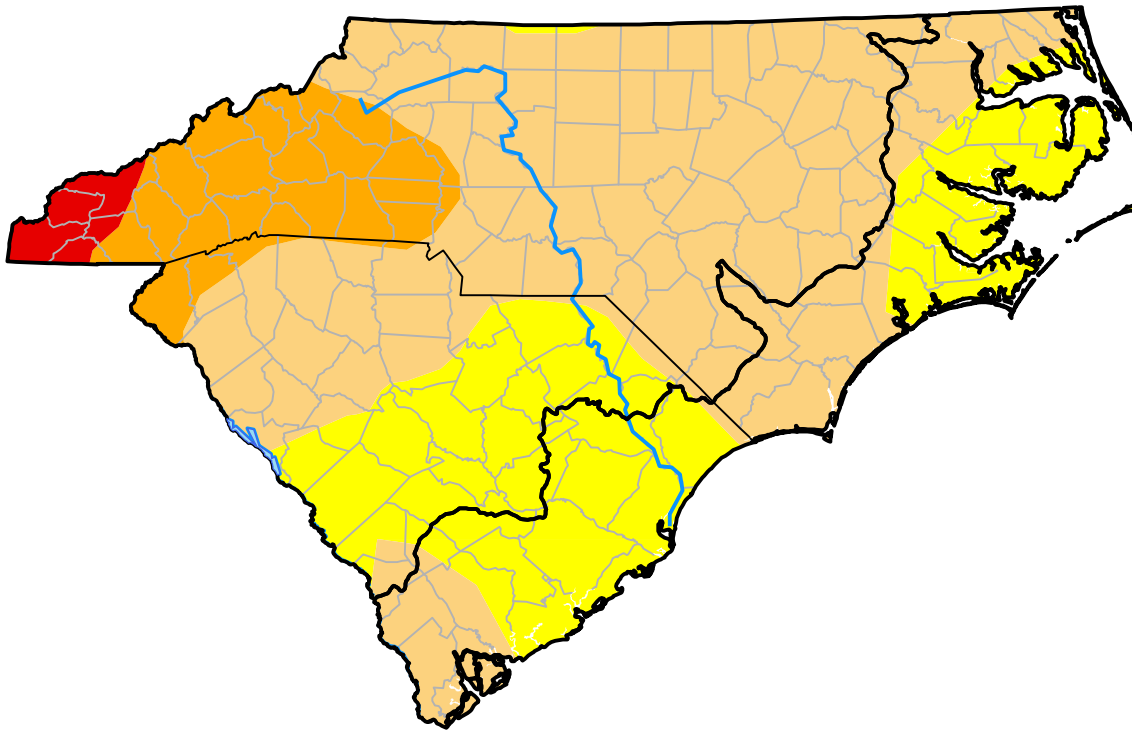
Carolinas RDEWS and Surrounding Areas

(Released Thursday, Aug. 2, 2007)

10:00 a.m. EDT

Drought Conditions (Percent Area)

	None	D0	D1	D2	D3	D4
Current	0.00	29.25	56.98	11.87	1.89	0.00
Last Week <i>07-26-2007</i>	0.00	37.35	54.96	5.79	1.89	0.00
3 Months Ago <i>05-03-2007</i>	40.40	35.02	19.94	4.64	0.00	0.00
Start of Calendar Year <i>01-04-2007</i>	96.43	3.57	0.00	0.00	0.00	0.00
Start of Water Year <i>09-28-2006</i>	93.20	6.80	0.00	0.00	0.00	0.00
One Year Ago <i>08-03-2006</i>	48.10	29.88	22.02	0.00	0.00	0.00



Intensity:

- None
- D0 Abnormally Dry
- D1 Moderate Drought
- D2 Severe Drought
- D3 Extreme Drought
- D4 Exceptional Drought

The Drought Monitor focuses on broad-scale conditions. Local conditions may vary. For more information on the Drought Monitor, go to <https://droughtmonitor.unl.edu/About.aspx>

Author:

Brian Fuchs
National Drought Mitigation Center

