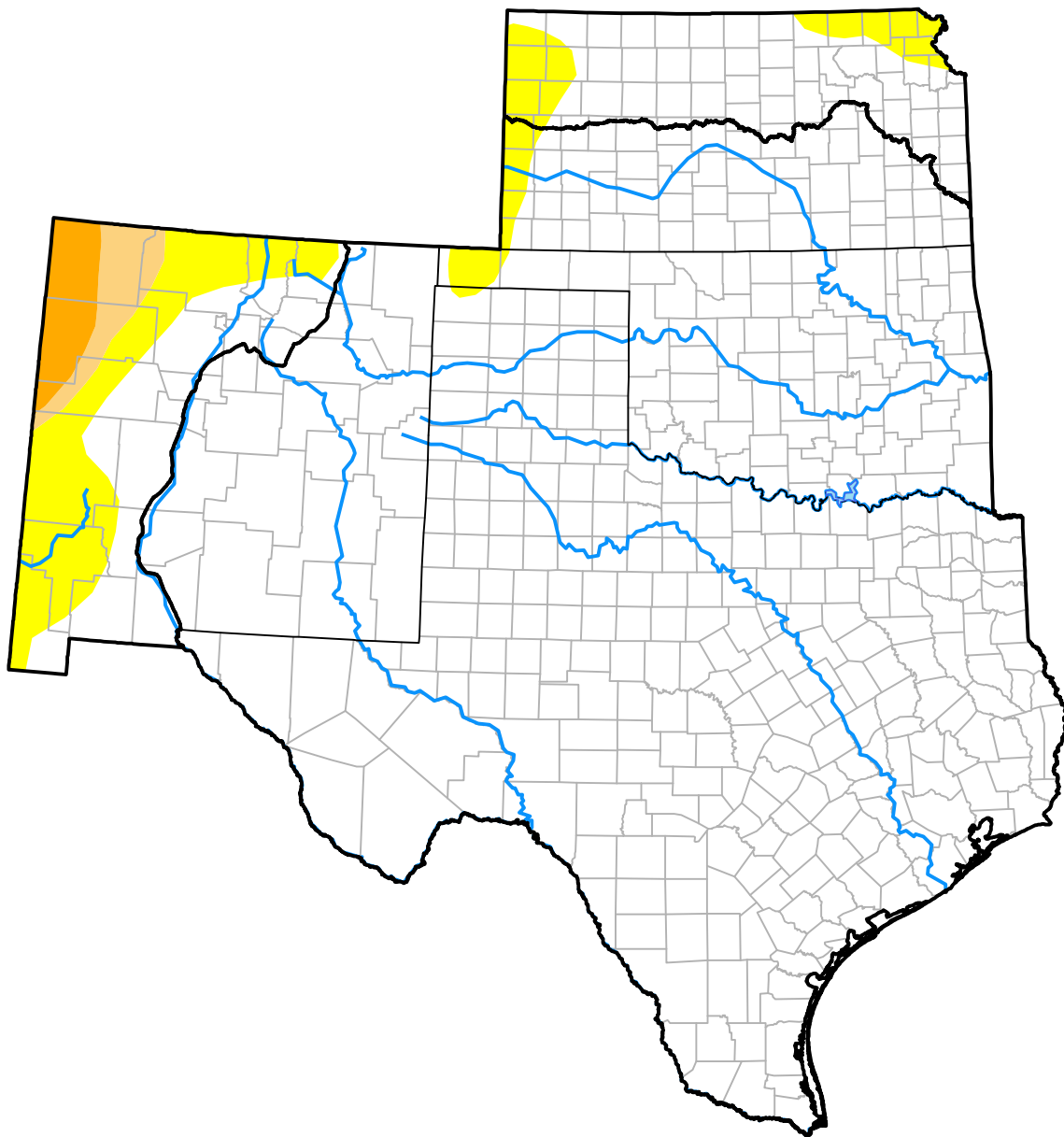


U.S. Drought Monitor

Southern Plains RDEWS

July 31, 2007
 (Released Thursday, Aug. 2, 2007)
 Valid 8 a.m. EDT



Drought Conditions (Percent Area)

	None	D0	D1	D2	D3	D4
Current	92.12	5.31	1.22	1.35	0.00	0.00
Last Week <i>07-26-2007</i>	92.12	5.31	1.22	1.35	0.00	0.00
3 Months Ago <i>05-03-2007</i>	88.22	8.45	1.98	1.35	0.00	0.00
Start of Calendar Year <i>01-04-2007</i>	32.71	28.30	13.28	11.81	11.71	2.19
Start of Water Year <i>09-28-2006</i>	35.09	16.42	15.95	18.23	13.37	0.95
One Year Ago <i>08-03-2006</i>	4.98	12.21	26.17	23.49	29.18	3.97

Intensity:

- None
- D0 Abnormally Dry
- D1 Moderate Drought
- D2 Severe Drought
- D3 Extreme Drought
- D4 Exceptional Drought

The Drought Monitor focuses on broad-scale conditions. Local conditions may vary. For more information on the Drought Monitor, go to <https://droughtmonitor.unl.edu/About.aspx>

Author:

Brian Fuchs
 National Drought Mitigation Center

