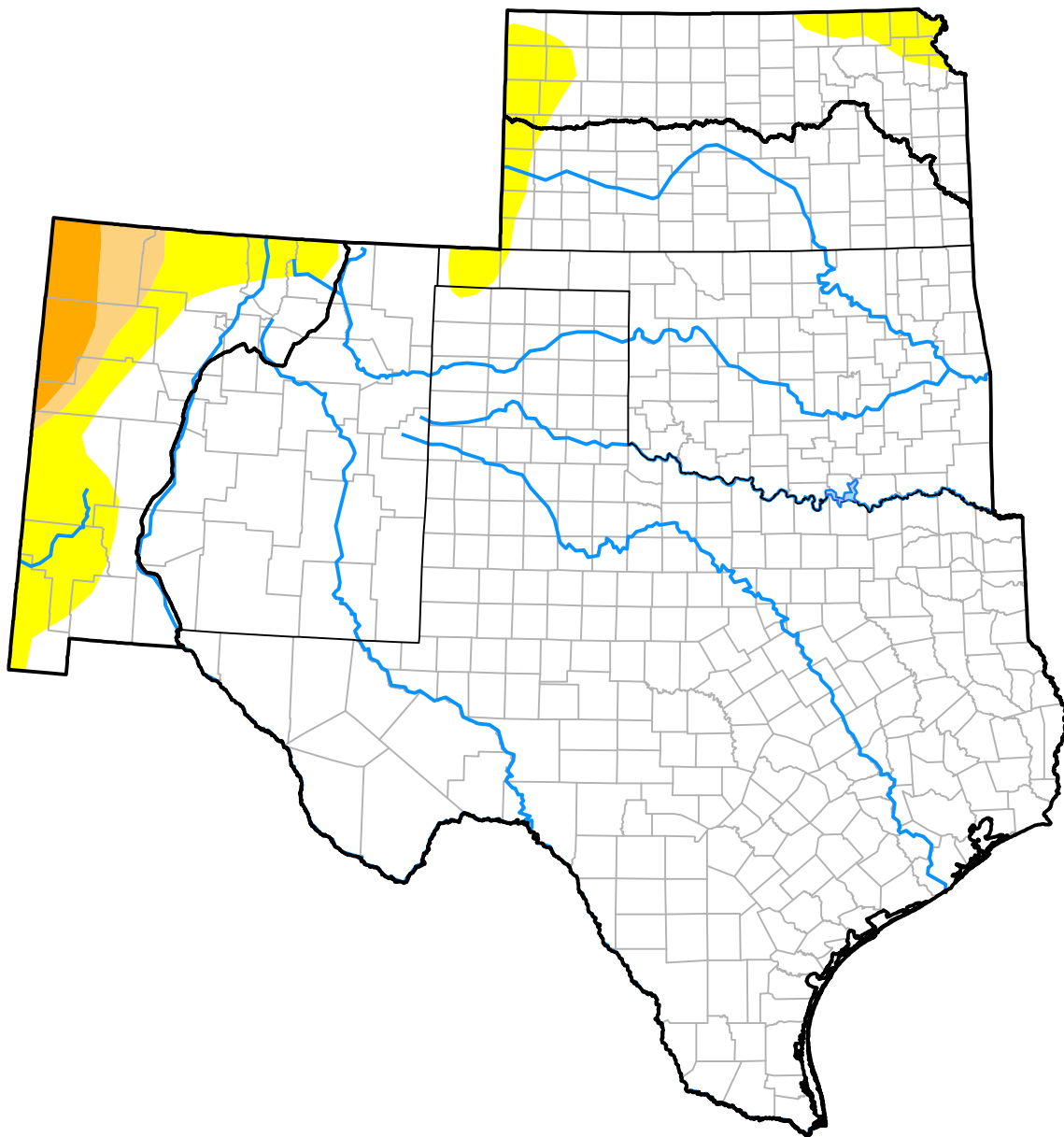


U.S. Drought Monitor

Southern Plains RDEWS

July 31, 2007
 (Released Thursday, Aug. 2, 2007)
 Valid 8 a.m. EDT



Drought Conditions (Percent Area)

	None	D0-D4	D1-D4	D2-D4	D3-D4	D4
Current	92.12	7.88	2.58	1.35	0.00	0.00
Last Week <i>07-26-2007</i>	92.12	7.88	2.58	1.35	0.00	0.00
3 Months Ago <i>05-03-2007</i>	88.22	11.78	3.33	1.35	0.00	0.00
Start of Calendar Year <i>01-04-2007</i>	32.71	67.29	38.98	25.71	13.90	2.19
Start of Water Year <i>09-28-2006</i>	35.09	64.91	48.50	32.55	14.32	0.95
One Year Ago <i>08-03-2006</i>	4.98	95.02	82.81	56.64	33.15	3.97

Intensity:

- None
- D0 Abnormally Dry
- D1 Moderate Drought
- D2 Severe Drought
- D3 Extreme Drought
- D4 Exceptional Drought

The Drought Monitor focuses on broad-scale conditions. Local conditions may vary. For more information on the Drought Monitor, go to <https://droughtmonitor.unl.edu/About.aspx>

Author:

Brian Fuchs
 National Drought Mitigation Center

