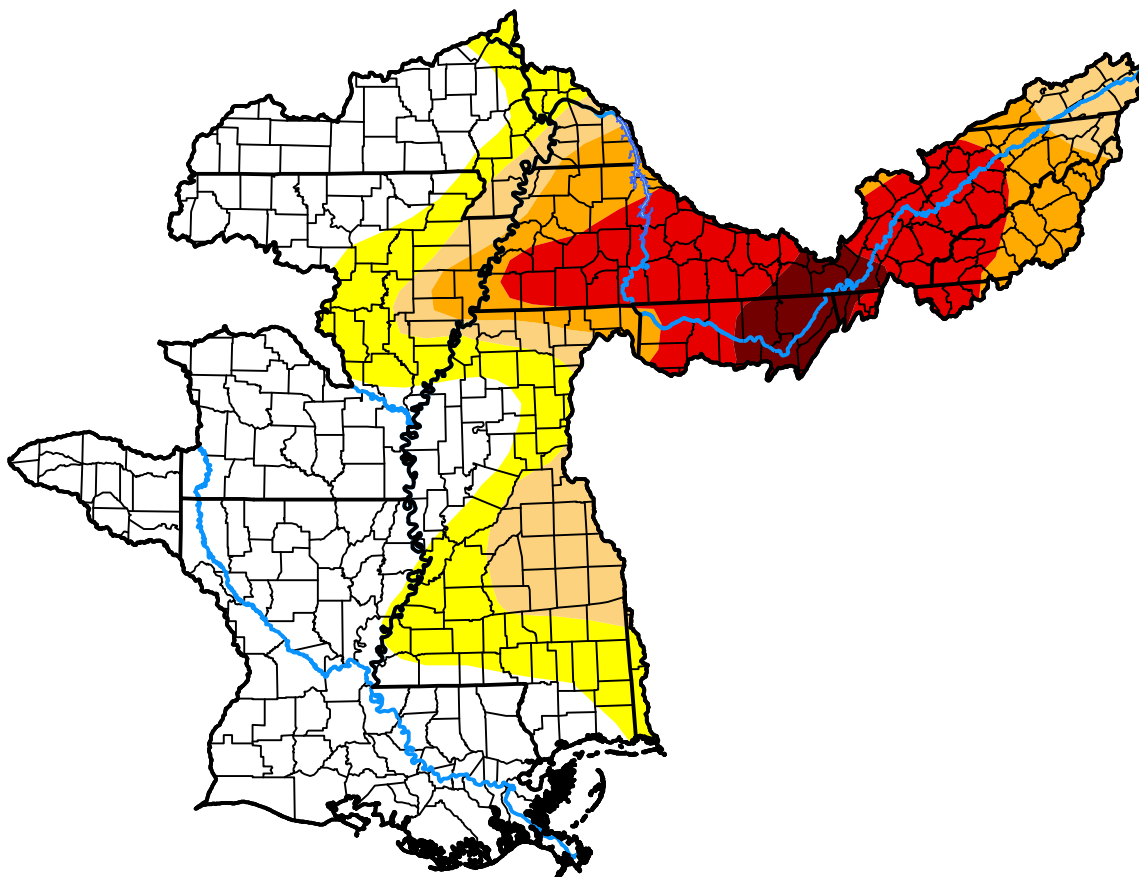


# U.S. Drought Monitor

## Lower Mississippi RFC

**July 31, 2007**  
 (Released Thursday, Aug. 2, 2007)  
 Valid 8 a.m. EDT



*Drought Conditions (Percent Area)*

	None	D0	D1	D2	D3	D4
<b>Current</b>	50.60	15.56	10.27	8.45	12.21	2.91
<b>Last Week</b> <i>07-26-2007</i>	54.67	14.80	7.84	8.22	12.00	2.47
<b>3 Months Ago</b> <i>05-03-2007</i>	28.32	28.23	18.61	21.32	3.52	0.00
<b>Start of Calendar Year</b> <i>01-04-2007</i>	67.29	27.73	2.45	1.63	0.89	0.00
<b>Start of Water Year</b> <i>09-28-2006</i>	26.52	53.28	16.53	1.85	1.07	0.74
<b>One Year Ago</b> <i>08-03-2006</i>	17.32	18.95	35.78	16.72	10.63	0.61

***Intensity:***

- None
- D0 Abnormally Dry
- D1 Moderate Drought
- D2 Severe Drought
- D3 Extreme Drought
- D4 Exceptional Drought

*The Drought Monitor focuses on broad-scale conditions. Local conditions may vary. For more information on the Drought Monitor, go to <https://droughtmonitor.unl.edu/About.aspx>*

***Author:***

Brian Fuchs  
 National Drought Mitigation Center

