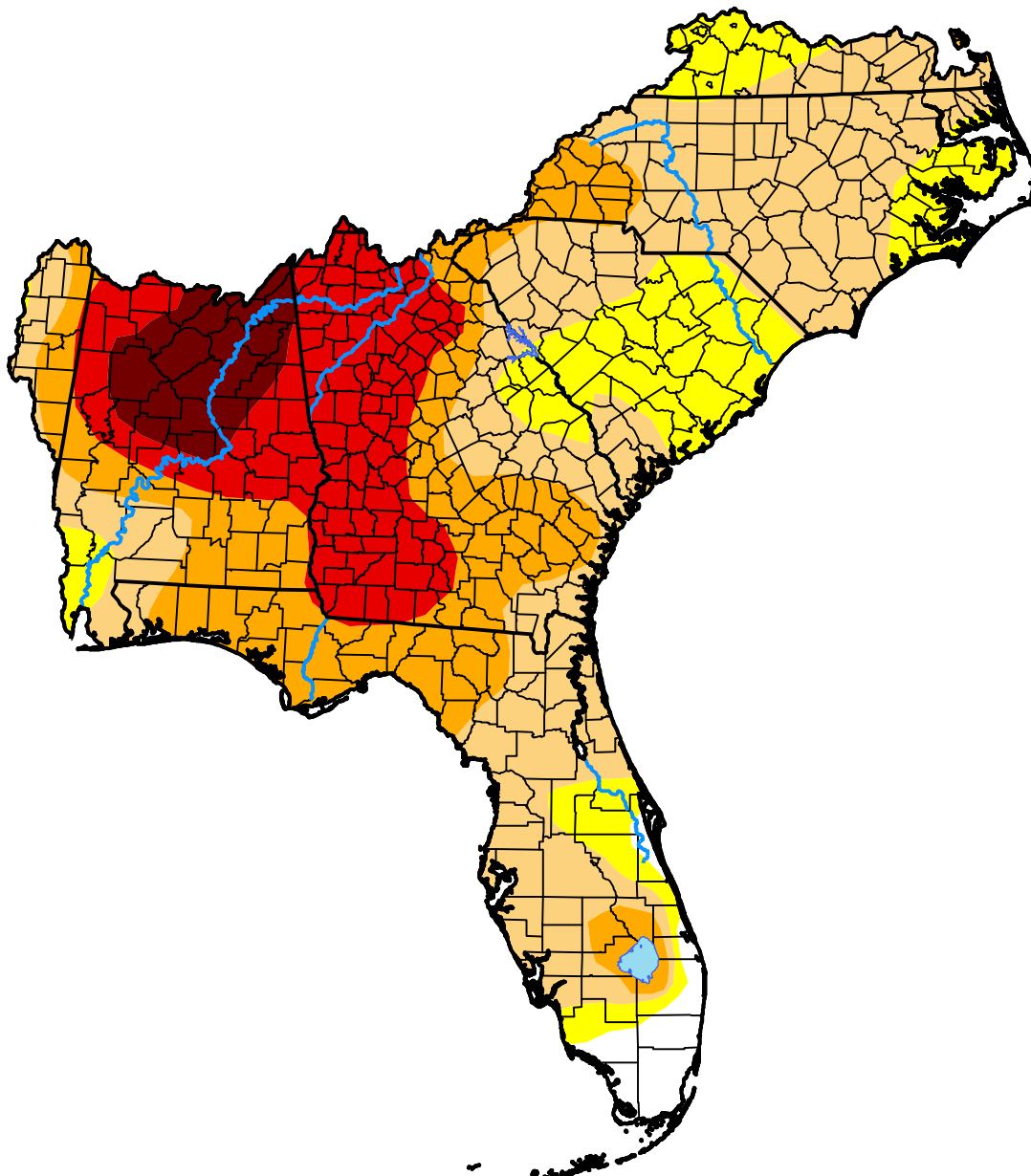


# U.S. Drought Monitor Southeast RFC

**July 31, 2007**  
(Released Thursday, Aug. 2, 2007)  
Valid 8 a.m. EDT



*Drought Conditions (Percent Area)*

	None	D0-D4	D1-D4	D2-D4	D3-D4	D4
<b>Current</b>	2.87	97.13	80.95	43.01	21.61	5.44
<b>Last Week</b> <i>07-26-2007</i>	2.87	97.13	77.62	38.60	16.77	2.67
<b>3 Months Ago</b> <i>05-03-2007</i>	19.53	80.47	65.50	37.98	16.67	0.00
<b>Start of Calendar Year</b> <i>01-04-2007</i>	48.04	51.96	11.67	1.69	0.00	0.00
<b>Start of Water Year</b> <i>09-28-2006</i>	47.80	52.20	27.01	0.00	0.00	0.00
<b>One Year Ago</b> <i>08-03-2006</i>	31.90	68.10	48.32	26.66	8.63	0.00

*Intensity:*



*The Drought Monitor focuses on broad-scale conditions. Local conditions may vary. For more information on the Drought Monitor, go to <https://droughtmonitor.unl.edu/About.aspx>*

*Author:*

Brian Fuchs  
National Drought Mitigation Center



[droughtmonitor.unl.edu](https://droughtmonitor.unl.edu)