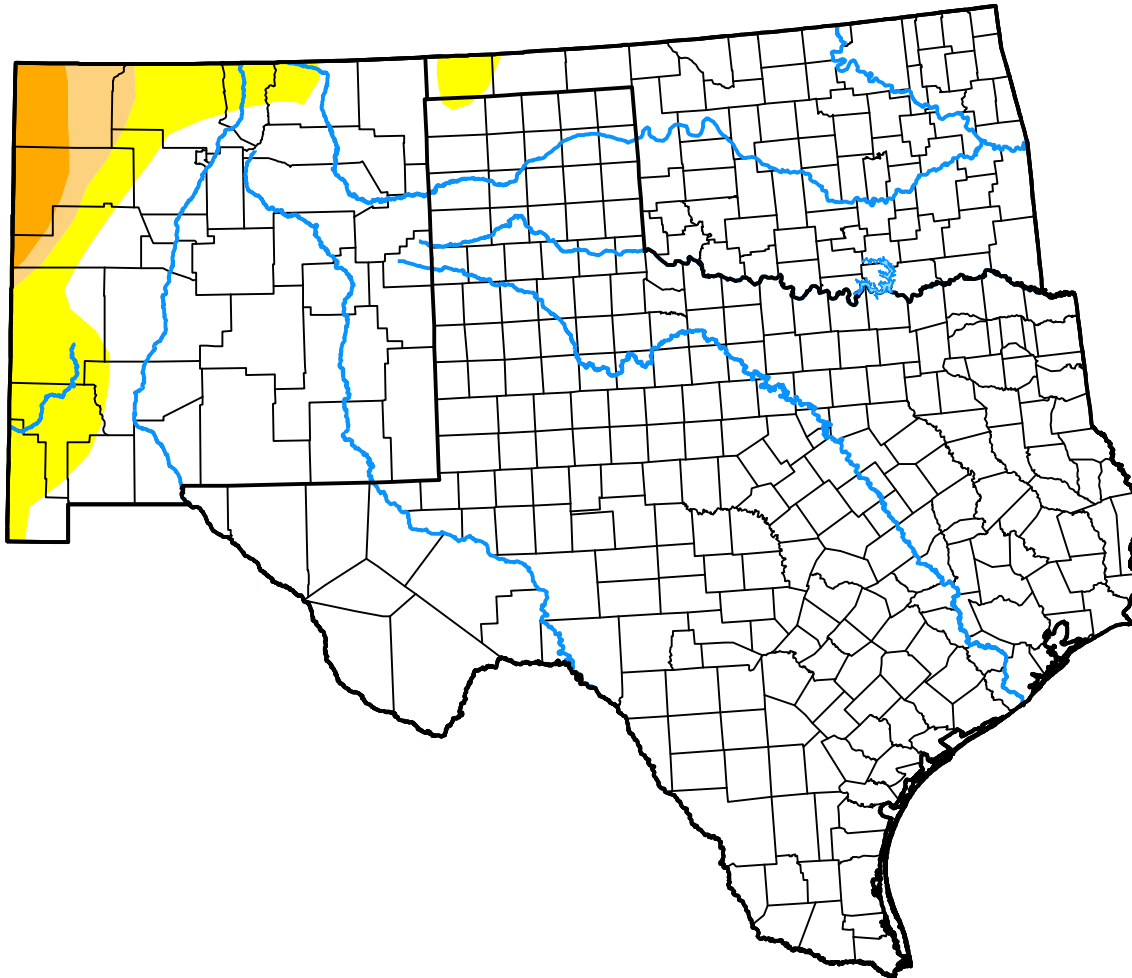


# U.S. Drought Monitor

## Southern Plains RDEWS

**July 31, 2007**  
 (Released Thursday, Aug. 2, 2007)  
 Valid 8 a.m. EDT



*Drought Conditions (Percent Area)*

	None	D0-D4	D1-D4	D2-D4	D3-D4	D4
<b>Current</b>	92.12	7.88	2.58	1.35	0.00	0.00
<b>Last Week</b> <i>07-24-2007</i>	92.12	7.88	2.58	1.35	0.00	0.00
<b>3 Months Ago</b> <i>05-01-2007</i>	88.22	11.78	3.33	1.35	0.00	0.00
<b>Start of Calendar Year</b> <i>01-02-2007</i>	32.71	67.29	38.98	25.71	13.90	2.19
<b>Start of Water Year</b> <i>09-26-2006</i>	35.09	64.91	48.49	32.55	14.32	0.95
<b>One Year Ago</b> <i>08-01-2006</i>	4.98	95.02	82.81	56.64	33.15	3.97

***Intensity:***

- None
- D0 Abnormally Dry
- D1 Moderate Drought
- D2 Severe Drought
- D3 Extreme Drought
- D4 Exceptional Drought

*The Drought Monitor focuses on broad-scale conditions. Local conditions may vary. For more information on the Drought Monitor, go to <https://droughtmonitor.unl.edu/About.aspx>*

***Author:***

Brian Fuchs  
 National Drought Mitigation Center

