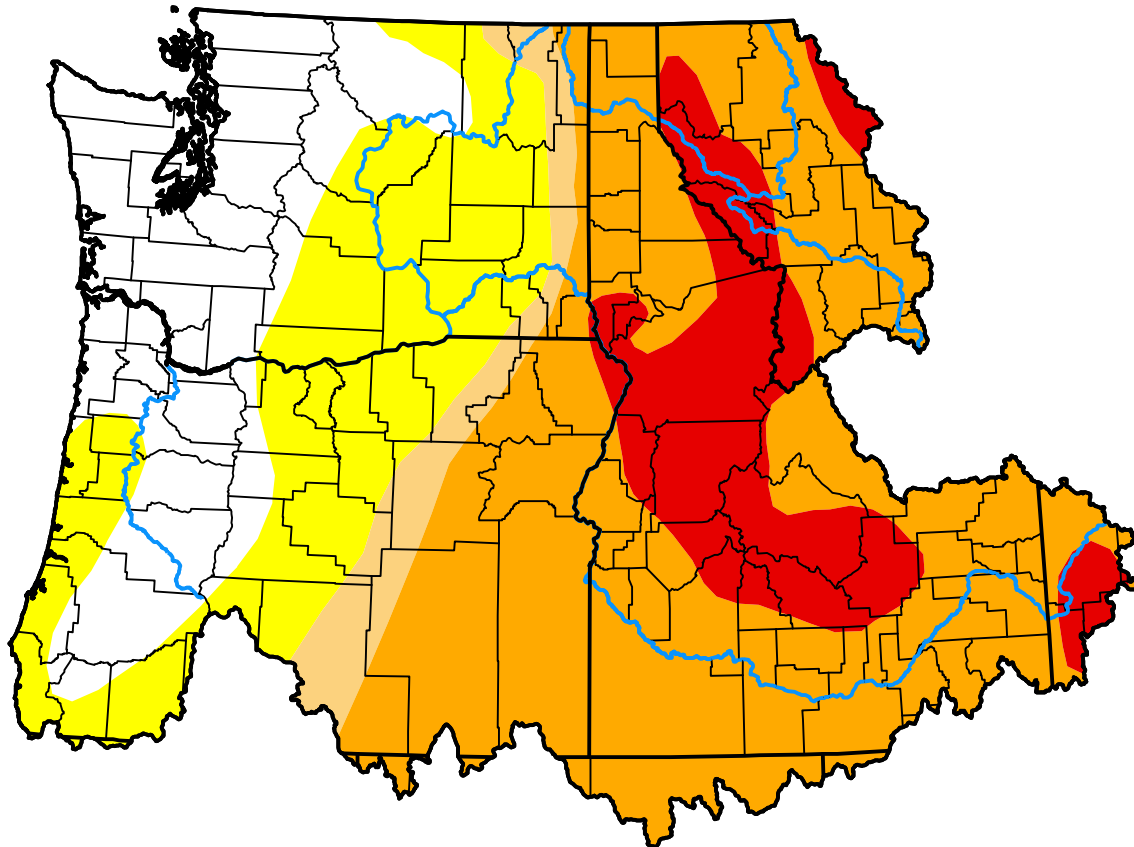


# U.S. Drought Monitor Northwest RFC

**August 21, 2007**  
(Released Thursday, Aug. 23, 2007)  
Valid 8 a.m. EDT



*Drought Conditions (Percent Area)*

	None	D0	D1	D2	D3	D4
<b>Current</b>	20.05	20.19	4.85	41.80	13.12	0.00
<b>Last Week</b> <i>08-16-2007</i>	20.42	20.24	4.58	45.97	8.79	0.00
<b>3 Months Ago</b> <i>05-24-2007</i>	41.95	36.71	17.65	3.69	0.00	0.00
<b>Start of Calendar Year</b> <i>01-04-2007</i>	86.96	10.96	1.91	0.13	0.03	0.00
<b>Start of Water Year</b> <i>09-28-2006</i>	42.78	42.03	14.46	0.73	0.00	0.00
<b>One Year Ago</b> <i>08-24-2006</i>	72.68	21.75	5.56	0.00	0.00	0.00

***Intensity:***



*The Drought Monitor focuses on broad-scale conditions. Local conditions may vary. For more information on the Drought Monitor, go to <https://droughtmonitor.unl.edu/About.aspx>*

***Author:***

Richard Heim  
NCEI/NOAA

