

# U.S. Drought Monitor

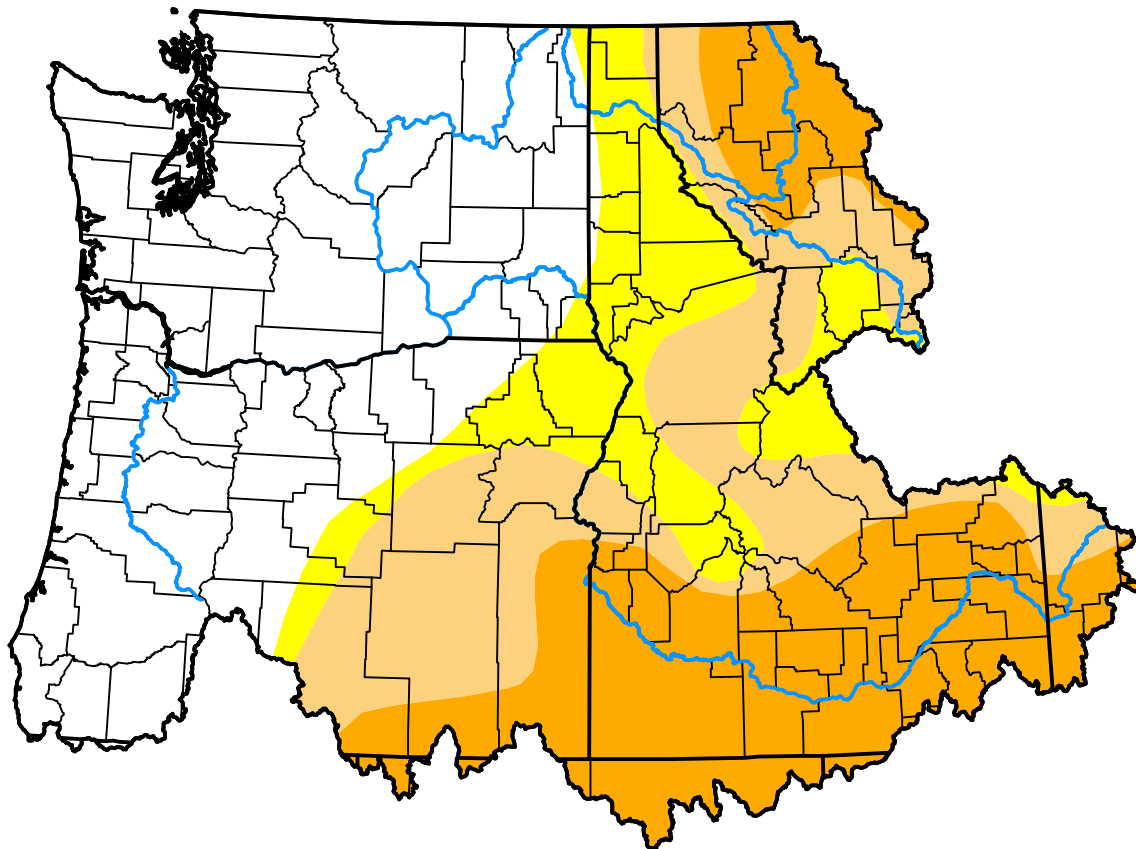
## Pacific Northwest Watershed

January 15, 2008  
 (Released Thursday, Jan. 17, 2008)

Valid 7 a.m. EST

### Drought Conditions (Percent Area)

	None	D0	D1	D2	D3	D4
<b>Current</b>	42.30	13.59	19.47	24.64	0.00	0.00
<b>Last Week</b> <i>01-10-2008</i>	40.18	7.85	29.20	22.76	0.00	0.00
<b>3 Months Ago</b> <i>10-18-2007</i>	20.15	20.25	7.00	37.81	14.79	0.00
<b>Start of Calendar Year</b> <i>01-03-2008</i>	40.25	7.57	28.32	23.87	0.00	0.00
<b>Start of Water Year</b> <i>09-27-2007</i>	13.95	25.50	5.33	40.43	14.79	0.00
<b>One Year Ago</b> <i>01-18-2007</i>	87.01	9.02	3.31	0.62	0.03	0.00



### Intensity:



The Drought Monitor focuses on broad-scale conditions. Local conditions may vary. For more information on the Drought Monitor, go to <https://droughtmonitor.unl.edu/About.aspx>

### Author:

Richard Tinker  
 CPC/NOAA/NWS/NCEP



[droughtmonitor.unl.edu](https://droughtmonitor.unl.edu)