

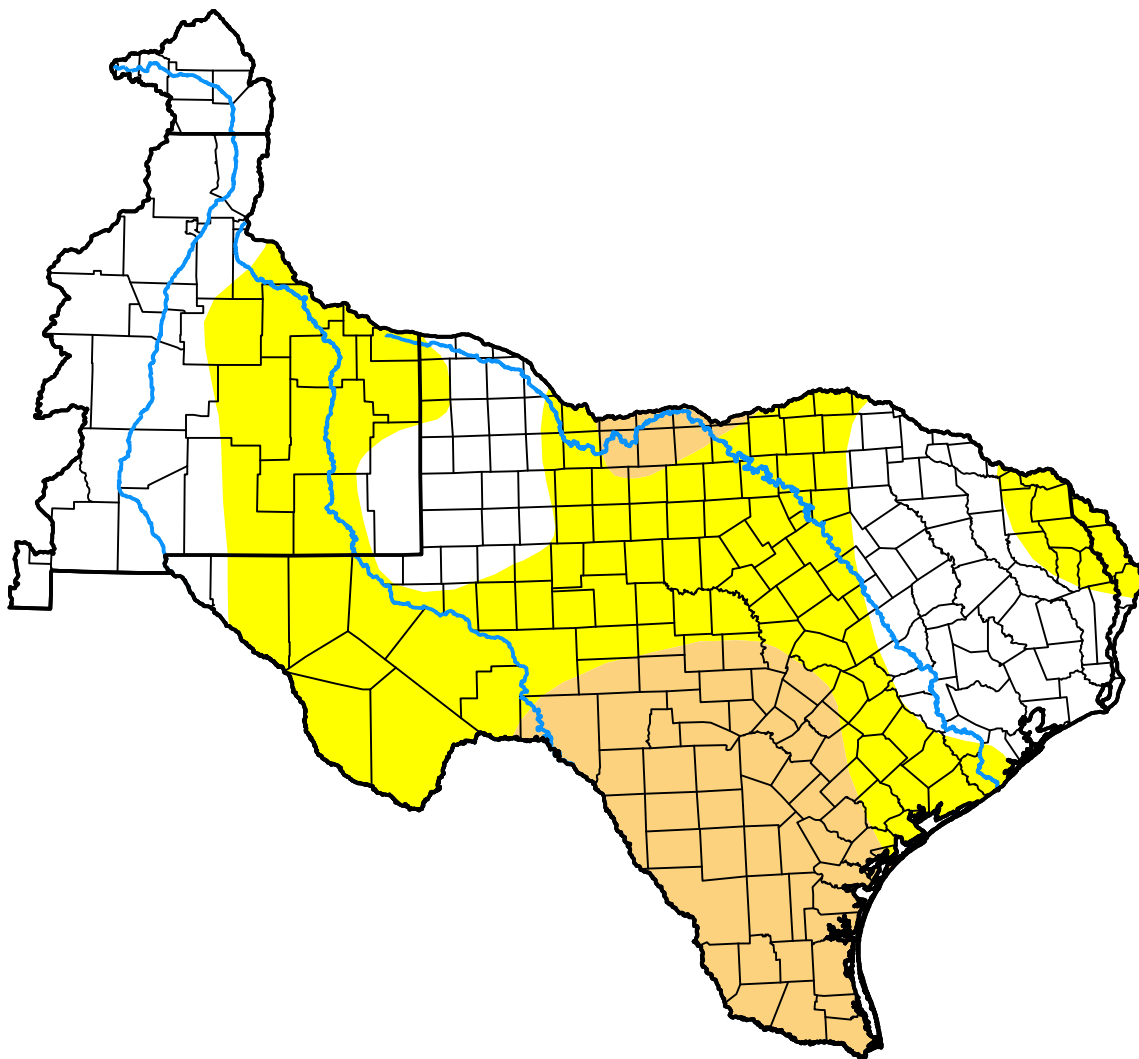
# U.S. Drought Monitor West Gulf RFC

**January 15, 2008**  
(Released Thursday, Jan. 17, 2008)

Valid 7 a.m. EST

## Drought Conditions (Percent Area)

	None	D0-D4	D1-D4	D2-D4	D3-D4	D4
<b>Current</b>	37.60	62.40	19.50	0.00	0.00	0.00
<b>Last Week</b> <i>01-10-2008</i>	43.74	56.26	11.91	0.00	0.00	0.00
<b>3 Months Ago</b> <i>10-18-2007</i>	95.50	4.50	0.00	0.00	0.00	0.00
<b>Start of Calendar Year</b> <i>01-03-2008</i>	57.94	42.06	7.39	0.00	0.00	0.00
<b>Start of Water Year</b> <i>09-27-2007</i>	99.23	0.77	0.00	0.00	0.00	0.00
<b>One Year Ago</b> <i>01-18-2007</i>	36.58	63.42	37.75	24.26	13.33	2.95



### Intensity:



The Drought Monitor focuses on broad-scale conditions. Local conditions may vary. For more information on the Drought Monitor, go to <https://droughtmonitor.unl.edu/About.aspx>

### Author:

Richard Tinker  
CPC/NOAA/NWS/NCEP



[droughtmonitor.unl.edu](https://droughtmonitor.unl.edu)