

U.S. Drought Monitor

Arkansas-White-Red Watershed

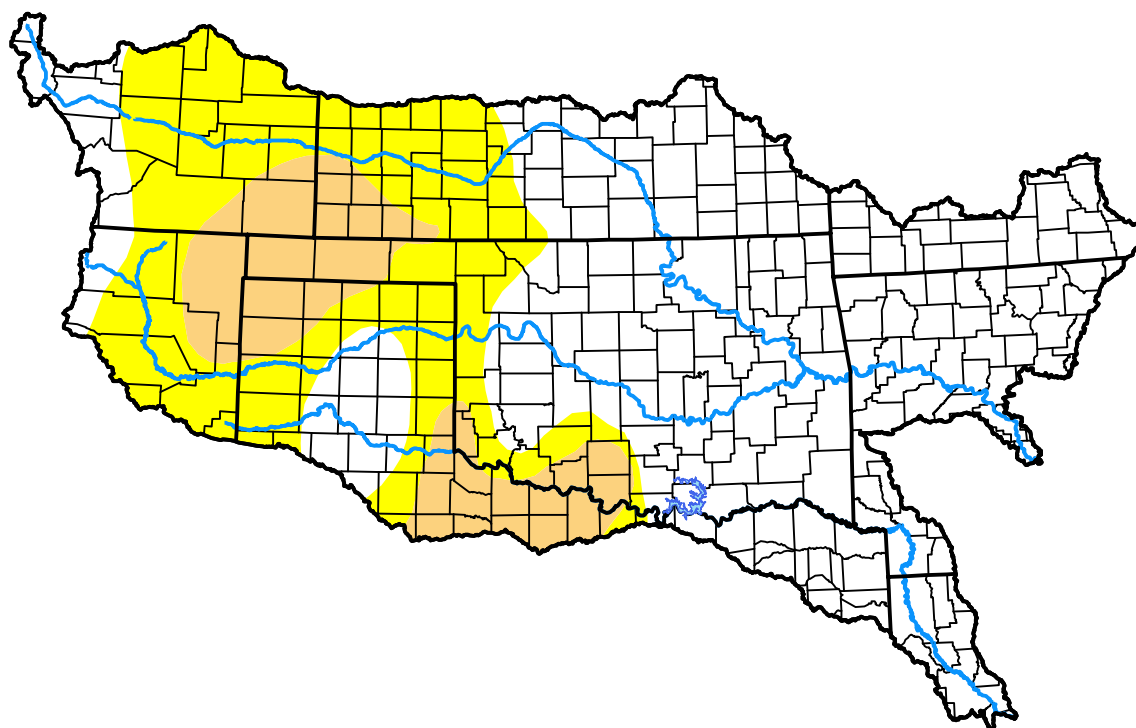
March 11, 2008

(Released Thursday, Mar. 13, 2008)

Valid 8 a.m. EDT

Drought Conditions (Percent Area)

	None	D0	D1	D2	D3	D4
Current	60.58	26.52	12.91	0.00	0.00	0.00
Last Week <i>03-06-2008</i>	60.58	26.52	12.91	0.00	0.00	0.00
3 Months Ago <i>12-13-2007</i>	50.21	37.68	12.11	0.00	0.00	0.00
Start of Calendar Year <i>01-03-2008</i>	61.50	30.67	7.83	0.00	0.00	0.00
Start of Water Year <i>09-27-2007</i>	85.09	12.28	1.95	0.68	0.00	0.00
One Year Ago <i>03-15-2007</i>	71.20	15.97	9.78	3.04	0.00	0.00



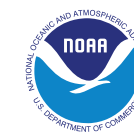
Intensity:

- None
- D0 Abnormally Dry
- D1 Moderate Drought
- D2 Severe Drought
- D3 Extreme Drought
- D4 Exceptional Drought

The Drought Monitor focuses on broad-scale conditions. Local conditions may vary. For more information on the Drought Monitor, go to <https://droughtmonitor.unl.edu/About.aspx>

Author:

Brian Fuchs
National Drought Mitigation Center



droughtmonitor.unl.edu