

# U.S. Drought Monitor

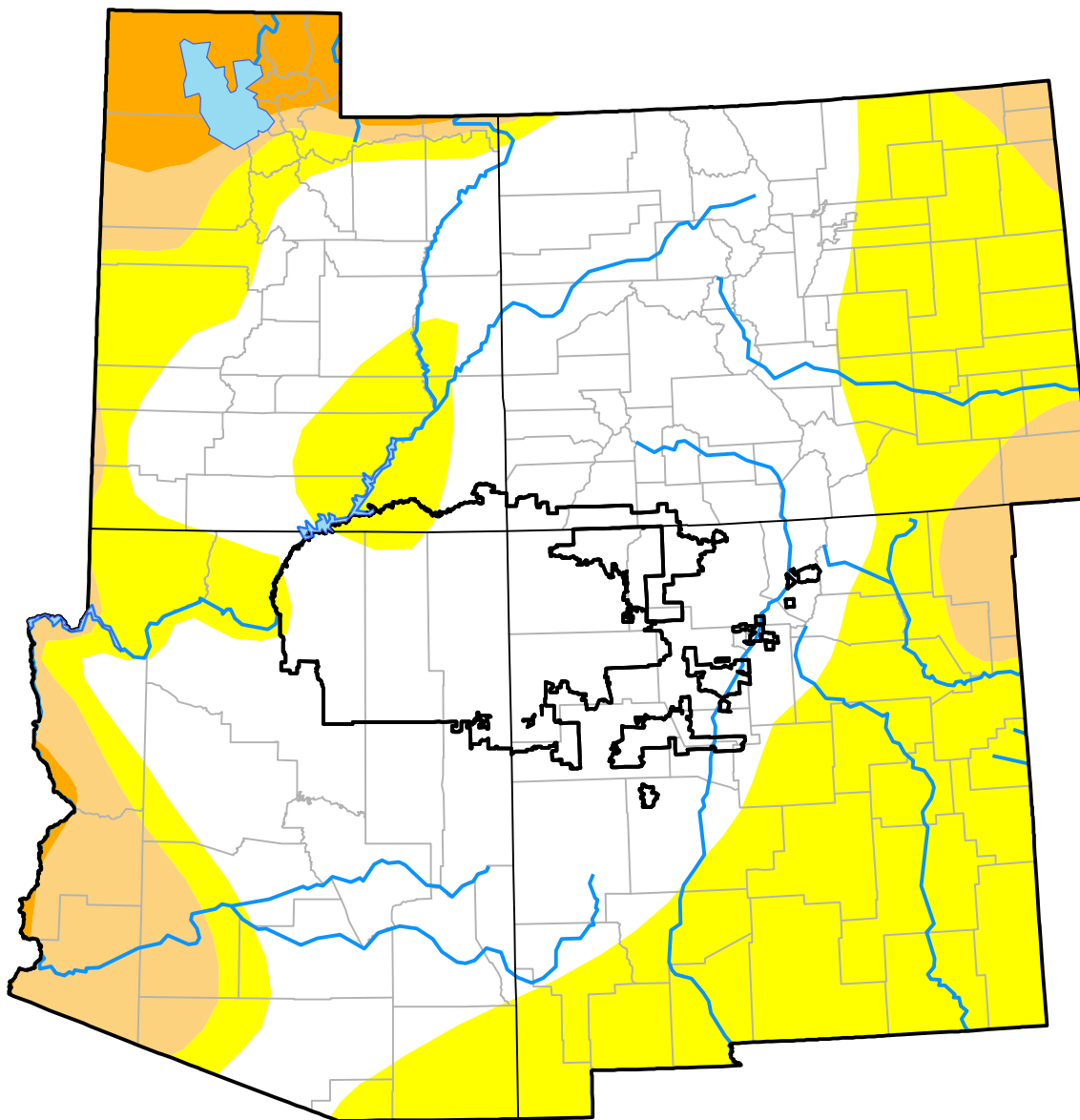
## Four Corners RDEWS

March 11, 2008  
 (Released Thursday, Mar. 13, 2008)

Valid 8 a.m. EDT

Drought Conditions (Percent Area)

	None	D0-D4	D1-D4	D2-D4	D3-D4	D4
<b>Current</b>	94.97	5.03	0.00	0.00	0.00	0.00
<b>Last Week</b> <i>03-06-2008</i>	94.97	5.03	0.00	0.00	0.00	0.00
<b>3 Months Ago</b> <i>12-13-2007</i>	32.60	67.40	27.58	3.50	0.00	0.00
<b>Start of Calendar Year</b> <i>01-03-2008</i>	32.60	67.40	27.63	3.50	0.00	0.00
<b>Start of Water Year</b> <i>09-27-2007</i>	31.18	68.82	25.26	3.11	0.00	0.00
<b>One Year Ago</b> <i>03-15-2007</i>	7.79	92.21	53.72	23.96	0.00	0.00



**Intensity:**

- None
- D0 Abnormally Dry
- D1 Moderate Drought
- D2 Severe Drought
- D3 Extreme Drought
- D4 Exceptional Drought

The Drought Monitor focuses on broad-scale conditions. Local conditions may vary. For more information on the Drought Monitor, go to <https://droughtmonitor.unl.edu/About.aspx>

**Author:**

Brian Fuchs  
 National Drought Mitigation Center



[droughtmonitor.unl.edu](https://droughtmonitor.unl.edu)