

U.S. Drought Monitor

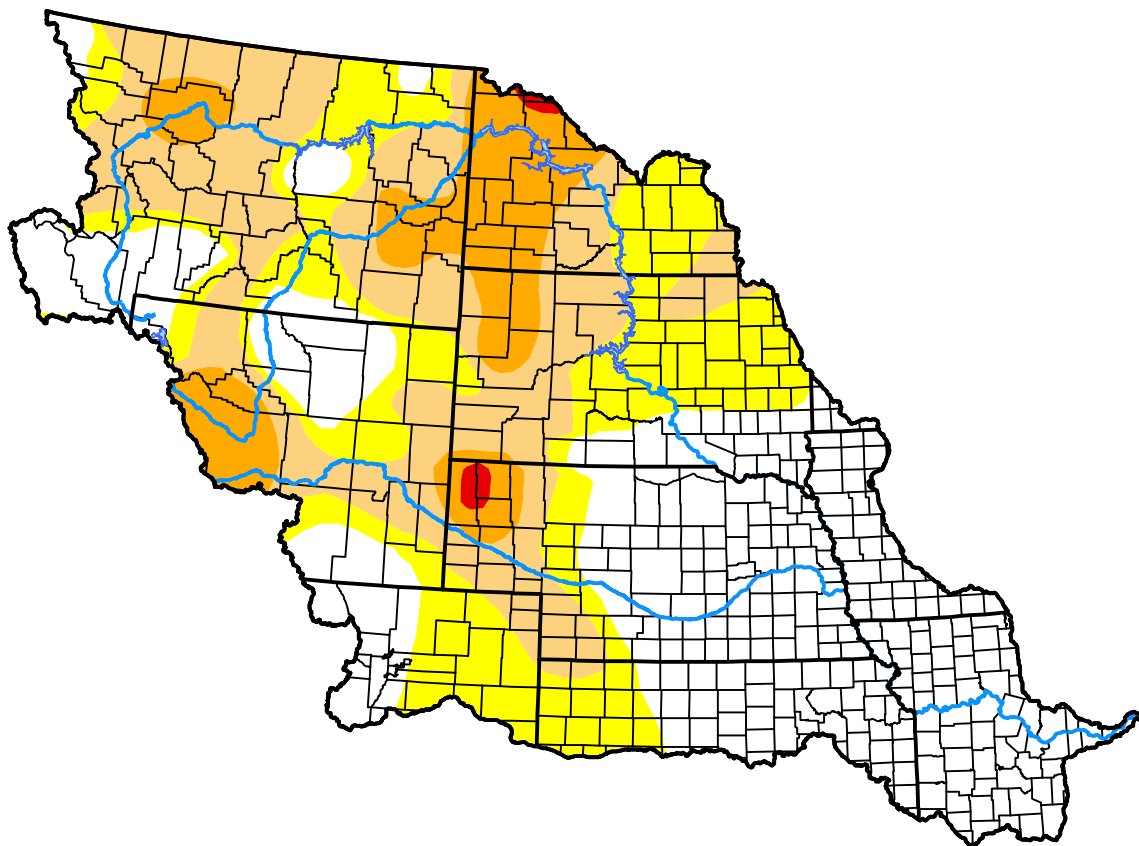
Missouri Basin RFC

March 11, 2008
(Released Thursday, Mar. 13, 2008)

Valid 8 a.m. EDT

Drought Conditions (Percent Area)

	None	D0-D4	D1-D4	D2-D4	D3-D4	D4
Current	40.77	59.23	35.93	11.23	0.39	0.00
Last Week <i>03-06-2008</i>	40.77	59.23	34.03	11.23	0.39	0.00
3 Months Ago <i>12-13-2007</i>	44.98	55.02	32.42	10.13	0.26	0.00
Start of Calendar Year <i>01-03-2008</i>	40.33	59.67	34.10	11.39	0.26	0.00
Start of Water Year <i>09-27-2007</i>	44.20	55.80	36.95	15.43	2.23	0.00
One Year Ago <i>03-15-2007</i>	39.28	60.72	43.17	25.96	8.54	0.00



Intensity:

- None
- D0 Abnormally Dry
- D1 Moderate Drought
- D2 Severe Drought
- D3 Extreme Drought
- D4 Exceptional Drought

The Drought Monitor focuses on broad-scale conditions. Local conditions may vary. For more information on the Drought Monitor, go to <https://droughtmonitor.unl.edu/About.aspx>

Author:

Brian Fuchs
 National Drought Mitigation Center



droughtmonitor.unl.edu