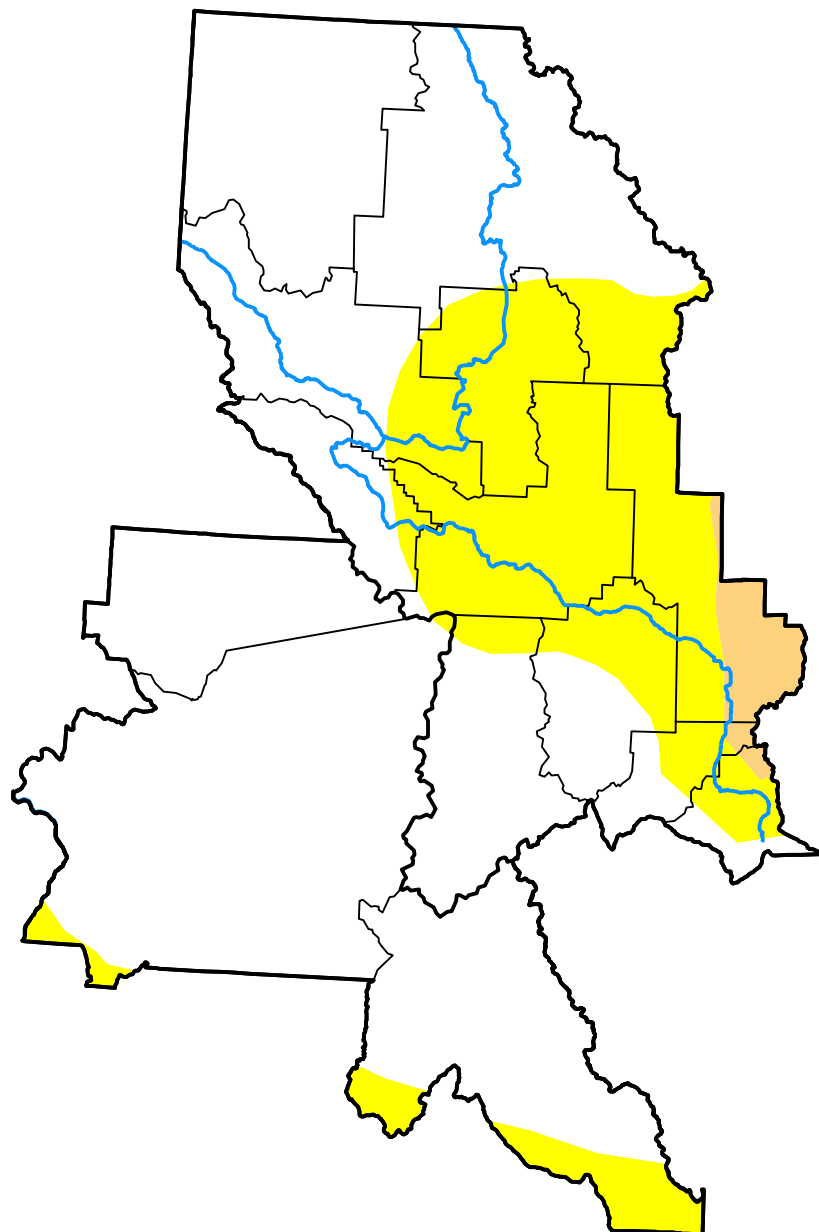


U.S. Drought Monitor

Missoula, MT WFO

March 11, 2008
(Released Thursday, Mar. 13, 2008)

Valid 8 a.m. EDT



Drought Conditions (Percent Area)

	None	D0	D1	D2	D3	D4
Current	72.83	25.09	2.08	0.00	0.00	0.00
Last Week <i>03-06-2008</i>	72.83	25.09	2.08	0.00	0.00	0.00
3 Months Ago <i>12-13-2007</i>	0.00	9.88	55.60	34.52	0.00	0.00
Start of Calendar Year <i>01-03-2008</i>	0.00	15.43	58.81	25.77	0.00	0.00
Start of Water Year <i>09-27-2007</i>	0.00	0.00	0.00	63.29	36.71	0.00
One Year Ago <i>03-15-2007</i>	96.24	3.21	0.55	0.00	0.00	0.00

Intensity:

- None
- D0 Abnormally Dry
- D1 Moderate Drought
- D2 Severe Drought
- D3 Extreme Drought
- D4 Exceptional Drought

The Drought Monitor focuses on broad-scale conditions. Local conditions may vary. For more information on the Drought Monitor, go to <https://droughtmonitor.unl.edu/About.aspx>

Author:

Brian Fuchs
 National Drought Mitigation Center



droughtmonitor.unl.edu